



# Trustee Boundary Maps

## Morgan Hill Unified School District

Presented by Ken Reynolds  
President, SchoolWorks, Inc.

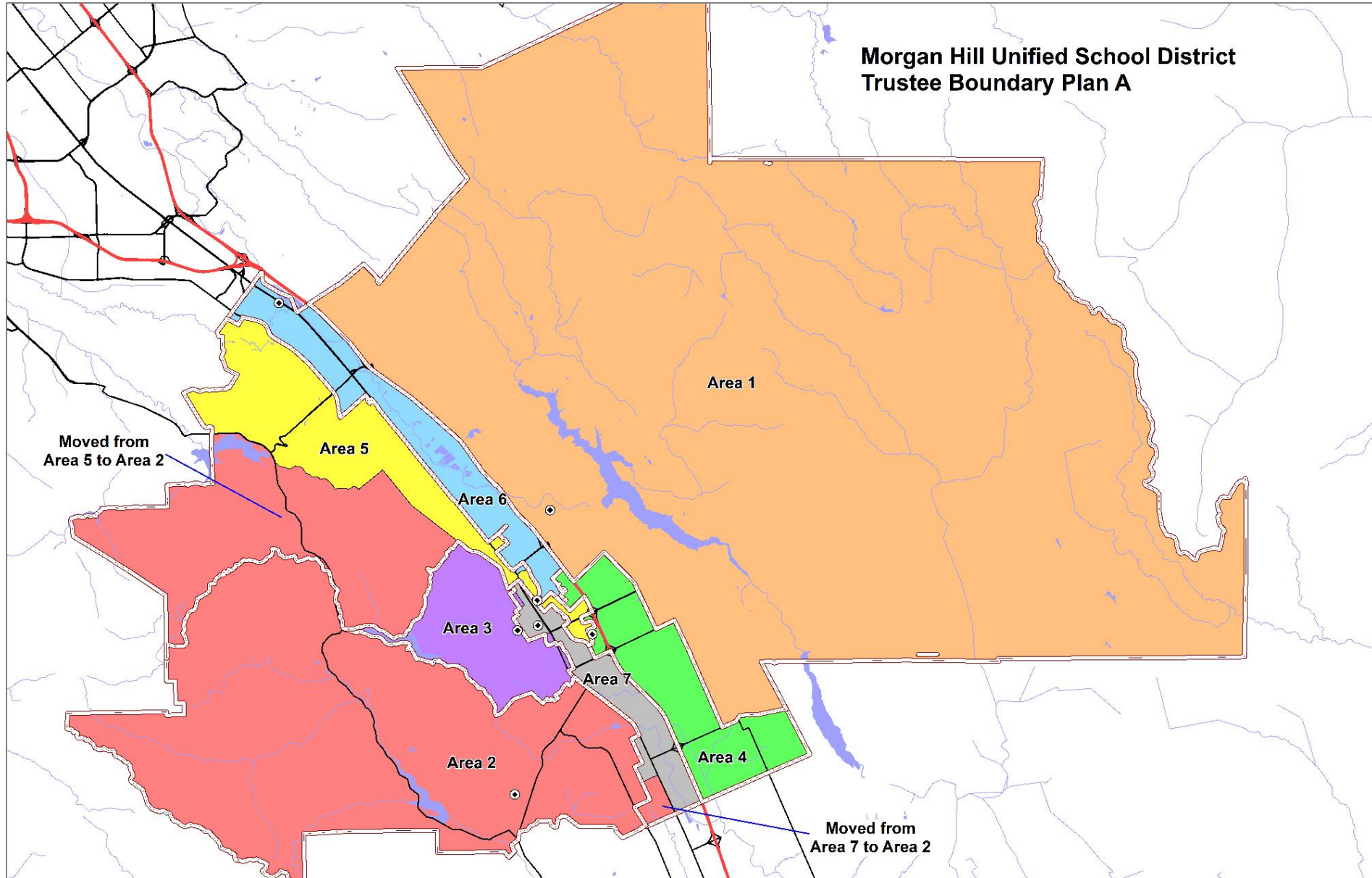


# INTRODUCTION

This presentation illustrates several options for the District to re-balance the population for each of the trustee areas..

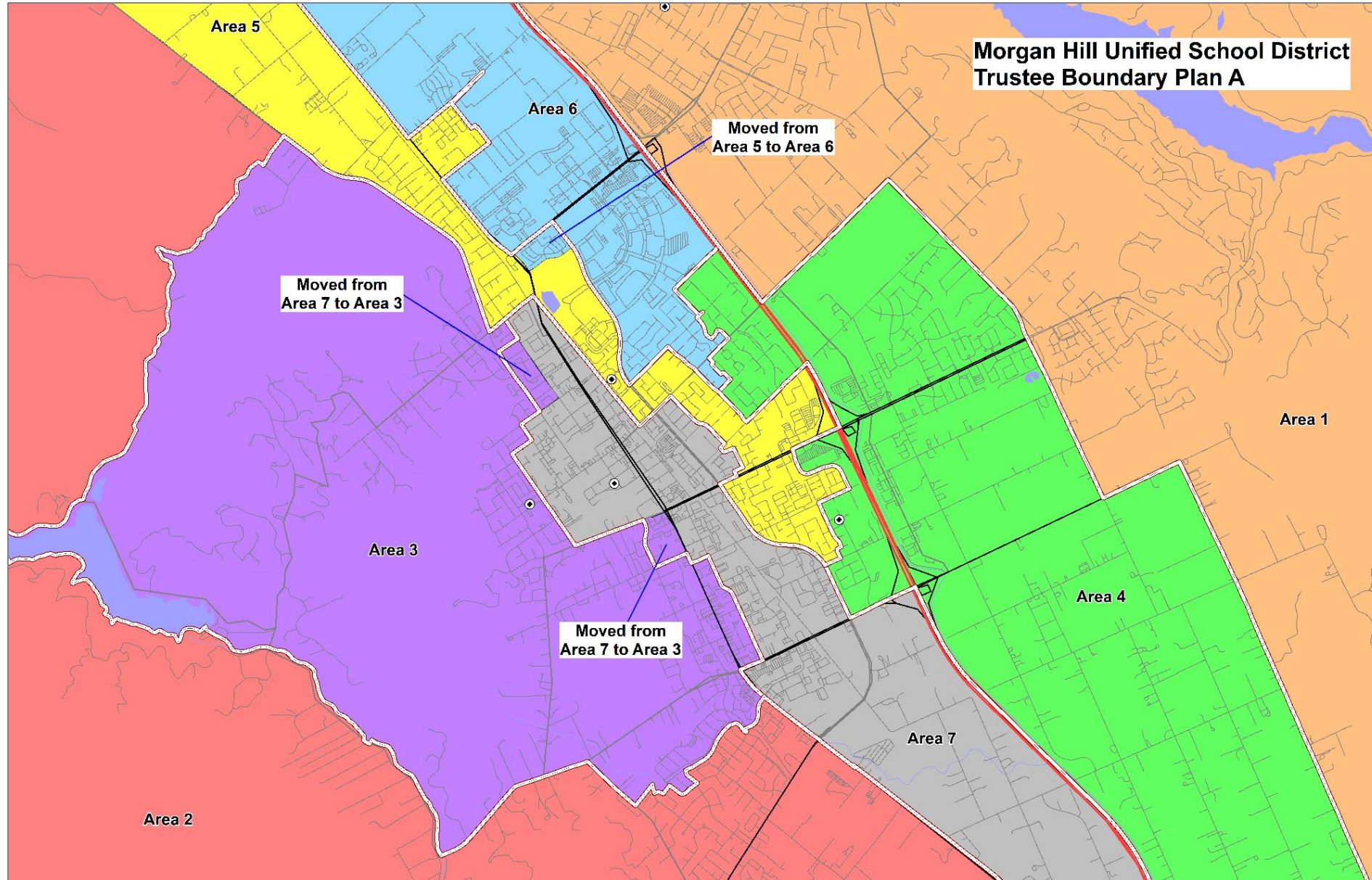
- The general guidelines for drawing trustee boundaries include:
  - Topography & Geography
  - Communities
  - Cohesiveness & Contiguous
  - Location of Current Trustees
  - Equal Population
- For each scenario, there are maps showing the boundaries for each trustee area, a table showing the population in each trustee area and the variance from the ideal population. The peak deviation must be less than 10% for the maps to meet the legal requirements. Finally, details of the racial/ethnic populations are provided.

# Trustee Area Boundary Map A





# Trustee Area Boundary Map A (Detail)



# Total Population and % Deviation, Map A

**Morgan Hill Unified School District  
Census 2020 Data Summary by Trustee Areas  
Plan A**

**Total Population Statistics**

Area:	1	2	3	4	5	6	7	Total
Trustees:	1	1	1	1	1	1	1	7
Population	10,002	9,497	9,649	9,453	10,012	9,568	9,631	<b>67,812</b>
% of Total Pop.	14.75%	14.00%	14.23%	13.94%	14.76%	14.11%	14.20%	
Ideal Pop.	9,687	9,687	9,687	9,687	9,687	9,687	9,687	
Ideal Pop. %	14.29%	14.29%	14.29%	14.29%	14.29%	14.29%	14.29%	
								<b><u>Peak</u></b>
Deviation	315	-190	-38	-234	325	-119	-56	<b>559</b>
Dev %	3.25%	-1.97%	-0.40%	-2.42%	3.35%	-1.23%	-0.58%	<b>5.77%</b>

Peak Deviation may not exceed 10%.

# Demographics by Trustee Area, Map A

Census Data by Trustee Area including Racial/Ethnic details  
Plan A

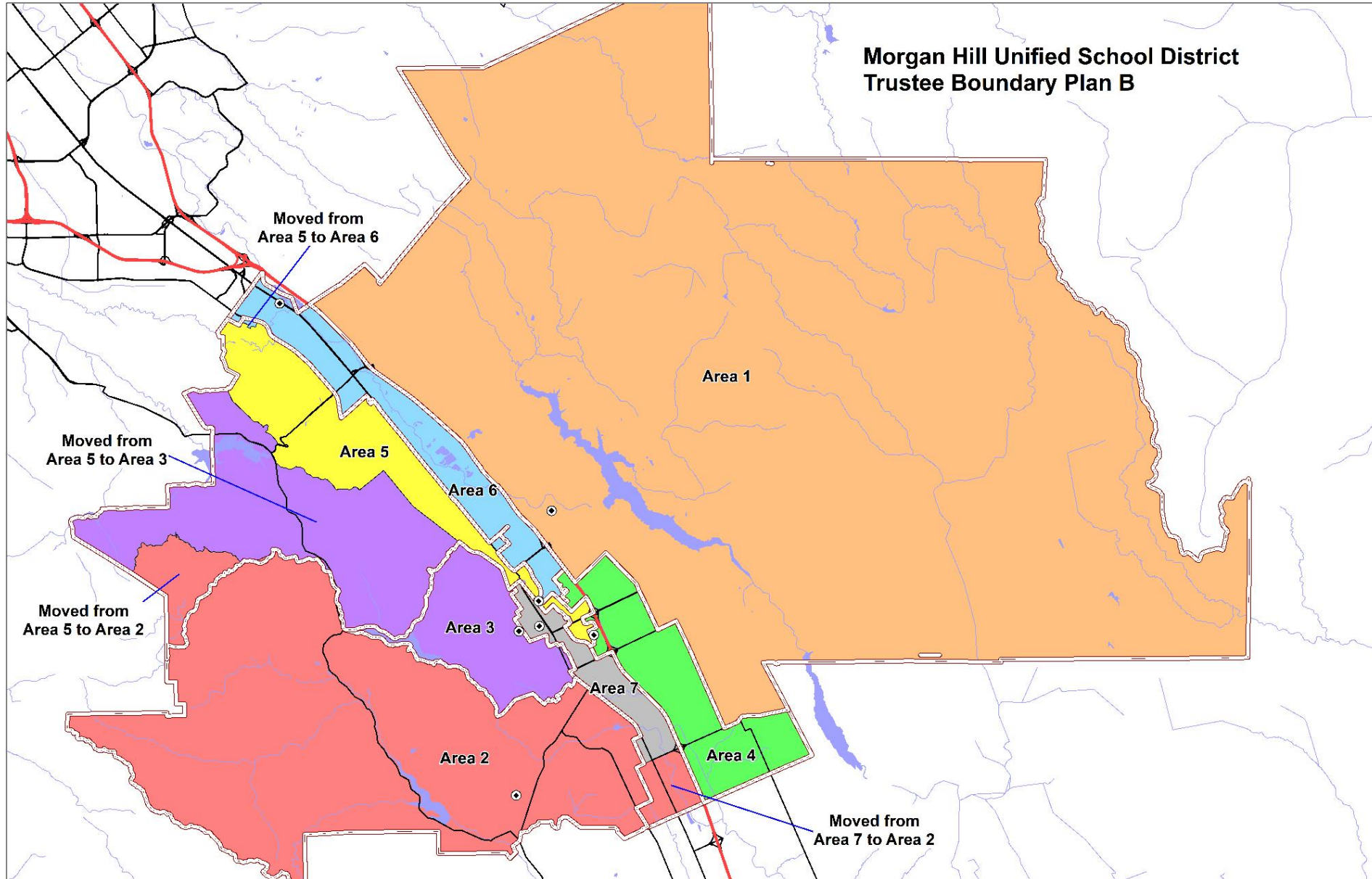
Area:	1	%	2	%	3	%	4	%	5	%	6	%	7	%	Total	%
Trustees:	1		1		1		1		1		1		1		7	
<b>Total Population</b>	<b>10,002</b>		<b>9,497</b>		<b>9,649</b>		<b>9,453</b>		<b>10,012</b>		<b>9,568</b>		<b>9,631</b>		<b>67,812</b>	
Hispanic	2,054	20.54%	2,394	25.21%	3,612	37.43%	3,259	34.48%	3,293	32.89%	3,018	31.54%	5,331	55.35%	22,961	33.86%
White - NH	5,408	54.07%	5,515	58.07%	4,332	44.90%	4,224	44.68%	3,523	35.19%	3,573	37.34%	2,756	28.62%	29,331	43.25%
Black - NH	195	1.95%	84	0.88%	163	1.69%	114	1.21%	237	2.37%	241	2.52%	236	2.45%	1,270	1.87%
American Indian - NH	10	0.10%	34	0.36%	27	0.28%	21	0.22%	35	0.35%	24	0.25%	23	0.24%	174	0.26%
Asian - NH	1,648	16.48%	818	8.61%	944	9.78%	1,262	13.35%	2,246	22.43%	2,134	22.30%	807	8.38%	9,859	14.54%
Pacific Islander - NH	24	0.24%	22	0.23%	33	0.34%	52	0.55%	42	0.42%	42	0.44%	25	0.26%	240	0.35%
Other - NH	66	0.66%	75	0.79%	50	0.52%	58	0.61%	61	0.61%	47	0.49%	48	0.50%	405	0.60%
Multiple Races - NH	597	5.97%	555	5.84%	488	5.06%	463	4.90%	575	5.74%	489	5.11%	405	4.21%	3,572	5.27%
<b>18+ Population</b>	<b>7,756</b>		<b>7,635</b>		<b>7,336</b>		<b>7,295</b>		<b>7,572</b>		<b>7,394</b>		<b>7,156</b>		<b>52,144</b>	
Hispanic	1,412	18.21%	1,750	22.92%	2,450	33.40%	2,321	31.82%	2,272	30.01%	2,103	28.44%	3,624	50.64%	15,932	30.55%
White - NH	4,435	57.18%	4,657	61.00%	3,601	49.09%	3,497	47.94%	2,869	37.89%	2,980	40.30%	2,304	32.20%	24,343	46.68%
Black - NH	166	2.14%	78	1.02%	129	1.76%	89	1.22%	183	2.42%	201	2.72%	200	2.79%	1,046	2.01%
American Indian - NH	6	0.08%	29	0.38%	24	0.33%	13	0.18%	25	0.33%	20	0.27%	22	0.31%	139	0.27%
Asian - NH	1,336	13.36%	684	7.20%	760	7.88%	1,004	10.62%	1,820	18.18%	1,708	17.85%	671	6.97%	7,983	11.77%
Pacific Islander - NH	15	0.19%	14	0.18%	20	0.27%	46	0.63%	37	0.49%	36	0.49%	23	0.32%	191	0.37%
Other - NH	48	0.62%	56	0.73%	40	0.55%	31	0.42%	38	0.50%	40	0.54%	39	0.54%	292	0.56%
Multiple Races - NH	338	4.36%	367	4.81%	312	4.25%	294	4.03%	328	4.33%	306	4.14%	273	3.81%	2,218	4.25%
<b>CVAP</b>	<b>7,058</b>		<b>6,554</b>		<b>6,633</b>		<b>6,550</b>		<b>7,066</b>		<b>6,615</b>		<b>5,084</b>		<b>45,560</b>	
Hispanic	1,304	18.48%	1,153	17.59%	1,976	29.79%	1,787	27.28%	1,927	27.27%	1,492	22.55%	1,907	37.51%	11,546	25.34%
White - NH	4,494	63.67%	4,612	70.37%	3,523	53.11%	3,644	55.63%	2,987	42.27%	3,453	52.20%	2,337	45.97%	25,050	54.98%
Black - NH	96	1.36%	95	1.45%	163	2.46%	111	1.69%	151	2.14%	112	1.69%	190	3.74%	918	2.01%
American Indian - NH	0	0.00%	0	0.00%	6	0.09%	5	0.08%	0	0.00%	0	0.00%	1	0.02%	12	0.03%
Asian - NH	851	12.06%	521	7.95%	705	10.63%	749	11.44%	1,730	24.48%	1,349	20.39%	430	8.46%	6,335	13.90%
Pacific Islander - NH	0	0.00%	11	0.17%	6	0.09%	0	0.00%	5	0.07%	0	0.00%	0	0.00%	22	0.05%
Multiple Races - NH	313	4.43%	162	2.47%	254	3.83%	254	3.88%	266	3.76%	209	3.16%	219	4.31%	1,677	3.68%

NH = Not of Hispanic Origin

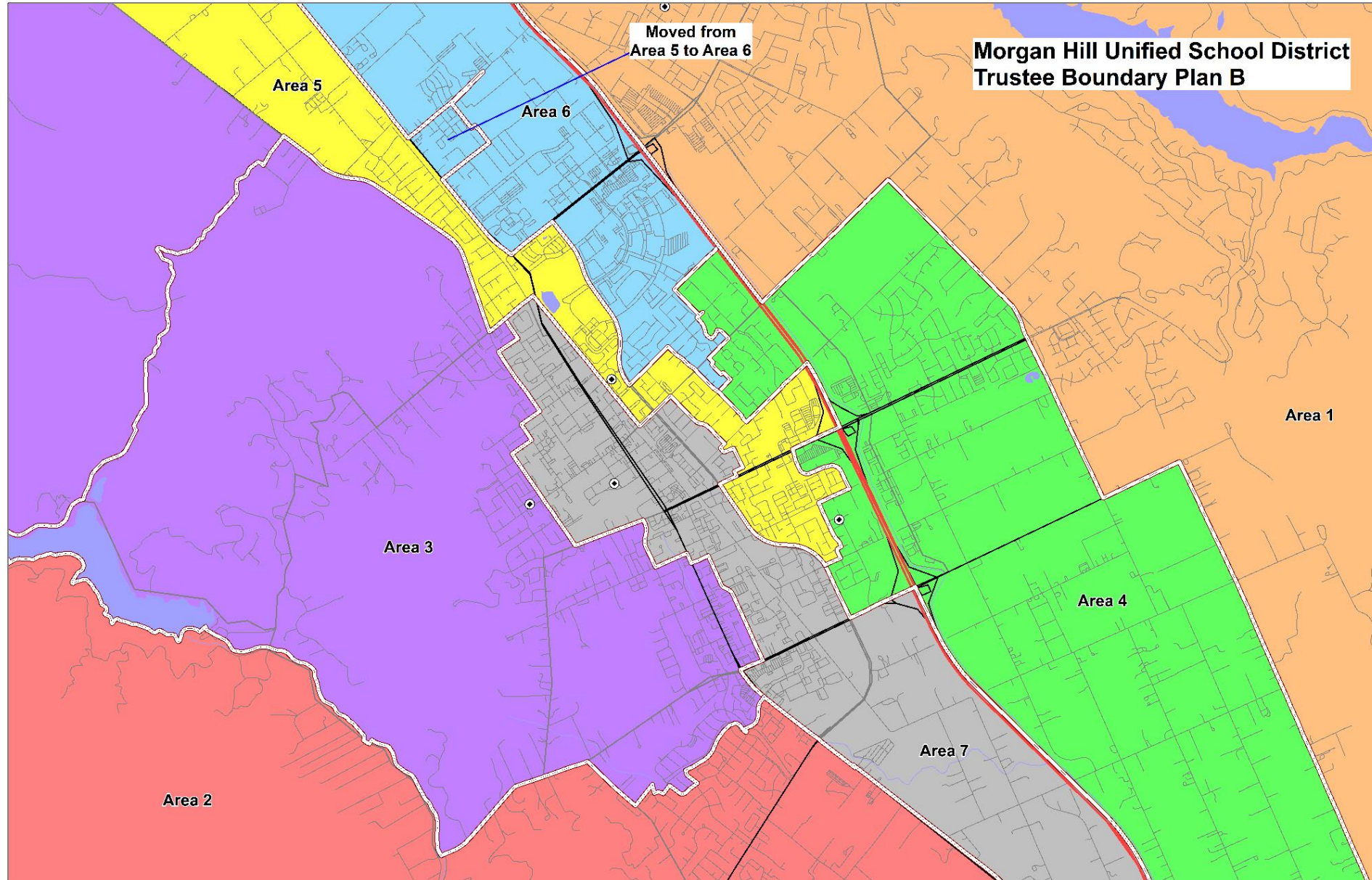
CVAP = Citizen Voting Age Population



# Trustee Area Boundary Map B



# Trustee Area Boundary Map B (Detail)





# Total Population and % Deviation, Map B

**Morgan Hill Unified School District  
Census 2020 Data Summary by Trustee Areas  
Plan B**

**Total Population Statistics**

Area:	1	2	3	4	5	6	7	Total
Trustees:	1	1	1	1	1	1	1	7
Population	10,002	9,676	9,324	9,453	9,787	9,721	9,849	<b>67,812</b>
% of Total Pop.	14.75%	14.27%	13.75%	13.94%	14.43%	14.34%	14.52%	
Ideal Pop.	9,687	9,687	9,687	9,687	9,687	9,687	9,687	
Ideal Pop. %	14.29%	14.29%	14.29%	14.29%	14.29%	14.29%	14.29%	
								<b><u>Peak</u></b>
Deviation	315	-11	-363	-234	100	34	162	<b>678</b>
Dev %	3.25%	-0.12%	-3.75%	-2.42%	1.03%	0.35%	1.67%	<b>7.00%</b>

Peak Deviation may not exceed 10%.

# Demographics by Trustee Area, Map B

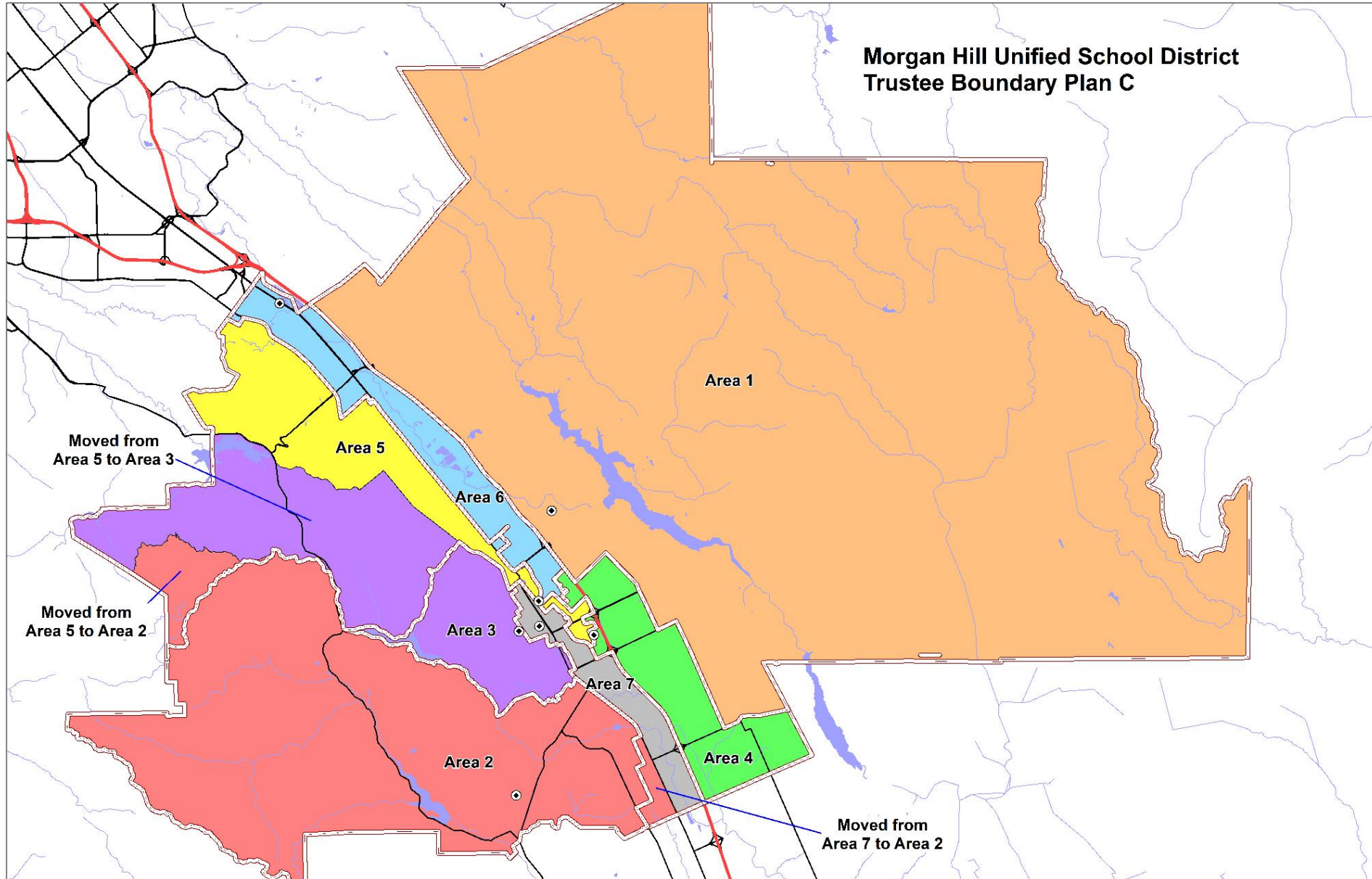
Census Data by Trustee Area including Racial/Ethnic details  
Plan B

Area:	1	%	2	%	3	%	4	%	5	%	6	%	7	%	Total	%
Trustees:	1		1		1		1		1		1		1		7	
<b>Total Population</b>	<b>10,002</b>		<b>9,676</b>		<b>9,324</b>		<b>9,453</b>		<b>9,787</b>		<b>9,721</b>		<b>9,849</b>		<b>67,812</b>	
Hispanic	2,054	20.54%	2,633	27.21%	3,371	36.15%	3,259	34.48%	3,251	33.22%	3,048	31.35%	5,345	54.27%	22,961	33.86%
White - NH	5,408	54.07%	5,491	56.75%	4,302	46.14%	4,224	44.68%	3,423	34.97%	3,647	37.52%	2,836	28.79%	29,331	43.25%
Black - NH	195	1.95%	89	0.92%	159	1.71%	114	1.21%	240	2.45%	234	2.41%	239	2.43%	1,270	1.87%
American Indian - NH	10	0.10%	28	0.29%	31	0.33%	21	0.22%	37	0.38%	22	0.23%	25	0.25%	174	0.26%
Asian - NH	1,648	16.48%	780	8.06%	904	9.70%	1,262	13.35%	2,215	22.63%	2,142	22.03%	908	9.22%	9,859	14.54%
Pacific Islander - NH	24	0.24%	22	0.23%	27	0.29%	52	0.55%	40	0.41%	44	0.45%	31	0.31%	240	0.35%
Other - NH	66	0.66%	73	0.75%	54	0.58%	58	0.61%	63	0.64%	43	0.44%	48	0.49%	405	0.60%
Multiple Races - NH	597	5.97%	560	5.79%	476	5.11%	463	4.90%	518	5.29%	541	5.57%	417	4.23%	3,572	5.27%
<b>18+ Population</b>	<b>7,756</b>		<b>7,779</b>		<b>7,106</b>		<b>7,295</b>		<b>7,286</b>		<b>7,624</b>		<b>7,298</b>		<b>52,144</b>	
Hispanic	1,412	18.21%	1,924	24.73%	2,274	32.00%	2,321	31.82%	2,176	29.87%	2,191	28.74%	3,634	49.79%	15,932	30.55%
White - NH	4,435	57.18%	4,647	59.74%	3,577	50.34%	3,497	47.94%	2,758	37.85%	3,073	40.31%	2,356	32.28%	24,343	46.68%
Black - NH	166	2.14%	82	1.05%	126	1.77%	89	1.22%	189	2.59%	191	2.51%	203	2.78%	1,046	2.01%
American Indian - NH	6	0.08%	23	0.30%	29	0.41%	13	0.18%	25	0.34%	20	0.26%	23	0.32%	139	0.27%
Asian - NH	1,336	13.36%	658	6.80%	741	7.95%	1,004	10.62%	1,769	18.07%	1,738	17.88%	737	7.48%	7,983	11.77%
Pacific Islander - NH	15	0.19%	14	0.18%	15	0.21%	46	0.63%	35	0.48%	38	0.50%	28	0.38%	191	0.37%
Other - NH	48	0.62%	56	0.72%	42	0.59%	31	0.42%	40	0.55%	36	0.47%	39	0.53%	292	0.56%
Multiple Races - NH	338	4.36%	375	4.82%	302	4.25%	294	4.03%	294	4.04%	337	4.42%	278	3.81%	2,218	4.25%
<b>CVAP</b>	<b>7,058</b>		<b>6,661</b>		<b>6,448</b>		<b>6,550</b>		<b>6,767</b>		<b>6,847</b>		<b>5,229</b>		<b>45,560</b>	
Hispanic	1,304	18.48%	1,255	18.84%	1,881	29.17%	1,787	27.28%	1,821	26.91%	1,587	23.18%	1,911	36.55%	11,546	25.34%
White - NH	4,494	63.67%	4,594	68.97%	3,432	53.23%	3,644	55.63%	2,860	42.26%	3,559	51.98%	2,467	47.18%	25,050	54.98%
Black - NH	96	1.36%	127	1.91%	168	2.61%	111	1.69%	152	2.25%	99	1.45%	165	3.16%	918	2.01%
American Indian - NH	0	0.00%	0	0.00%	6	0.09%	5	0.08%	0	0.00%	0	0.00%	1	0.02%	12	0.03%
Asian - NH	851	12.06%	489	7.34%	705	10.93%	749	11.44%	1,673	24.72%	1,383	20.20%	485	9.28%	6,335	13.90%
Pacific Islander - NH	0	0.00%	11	0.17%	6	0.09%	0	0.00%	5	0.07%	0	0.00%	0	0.00%	22	0.05%
Multiple Races - NH	313	4.43%	185	2.78%	250	3.88%	254	3.88%	256	3.78%	219	3.20%	200	3.82%	1,677	3.68%

NH = Not of Hispanic Origin

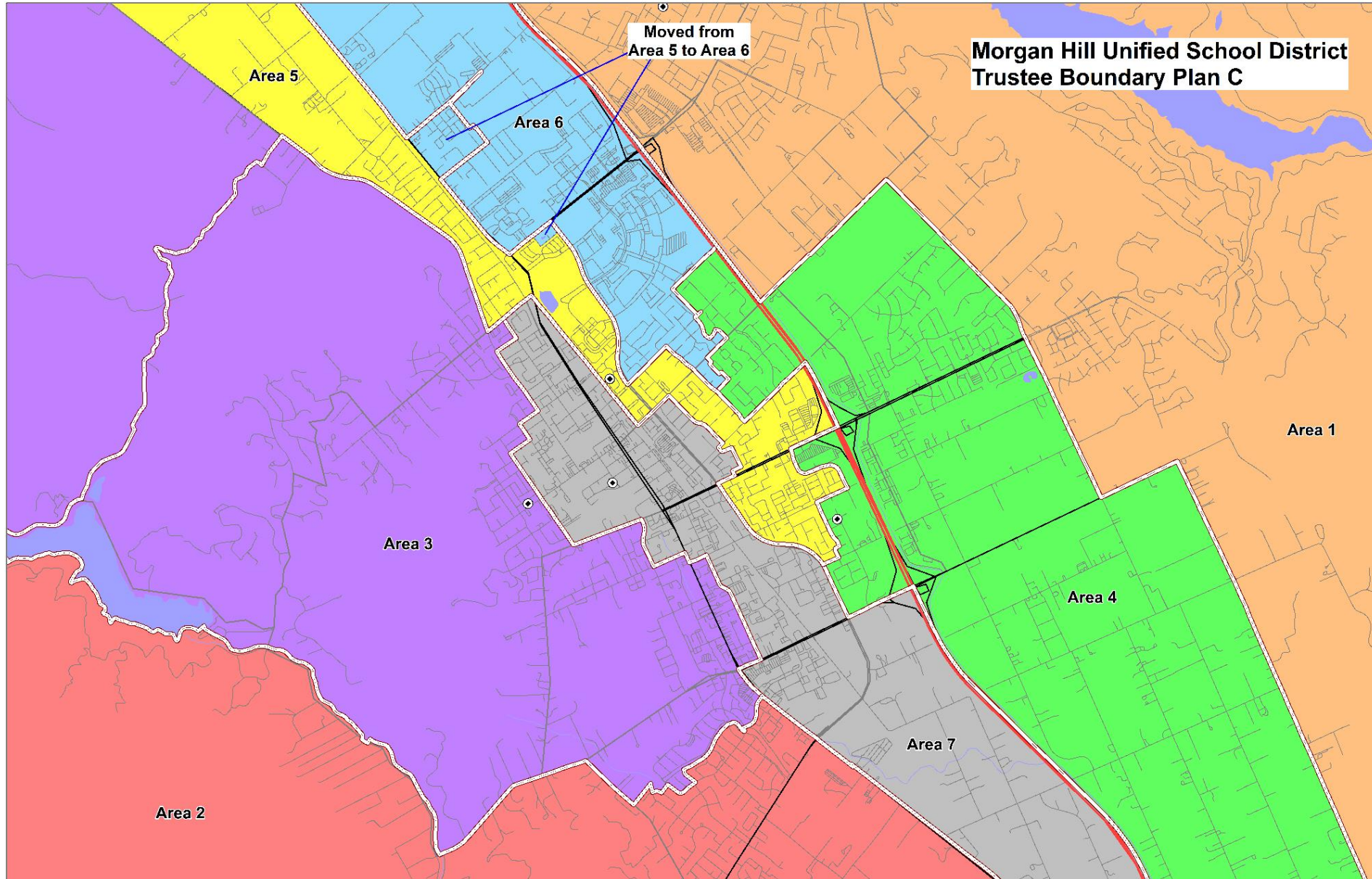
CVAP = Citizen Voting Age Population

# Trustee Area Boundary Map C





# Trustee Area Boundary Map C (Detail)



# Total Population and % Deviation, Map C

**Morgan Hill Unified School District  
Census 2020 Data Summary by Trustee Areas  
Plan C**

**Total Population Statistics**

Area:	1	2	3	4	5	6	7	Total
Trustees:	1	1	1	1	1	1	1	7
Population	10,002	9,551	9,252	9,453	9,933	9,647	9,974	<b>67,812</b>
% of Total Pop.	14.75%	14.08%	13.64%	13.94%	14.65%	14.23%	14.71%	
Ideal Pop.	9,687	9,687	9,687	9,687	9,687	9,687	9,687	
Ideal Pop. %	14.29%	14.29%	14.29%	14.29%	14.29%	14.29%	14.29%	
								<b><u>Peak</u></b>
Deviation	315	-136	-435	-234	246	-40	287	<b>750</b>
Dev %	3.25%	-1.41%	-4.49%	-2.42%	2.53%	-0.42%	2.96%	<b>7.74%</b>

Peak Deviation may not exceed 10%.

# Demographics by Trustee Area, Map C

Census Data by Trustee Area including Racial/Ethnic details  
Plan C

Area:	1	%	2	%	3	%	4	%	5	%	6	%	7	%	Total	%
Trustees:	1		1		1		1		1		1		1		7	
<b>Total Population</b>	<b>10,002</b>		<b>9,551</b>		<b>9,252</b>		<b>9,453</b>		<b>9,933</b>		<b>9,647</b>		<b>9,974</b>		<b>67,812</b>	
Hispanic	2,054	20.54%	2,535	26.54%	3,359	36.31%	3,259	34.48%	3,100	31.21%	3,211	33.28%	5,443	54.57%	22,961	33.86%
White - NH	5,408	54.07%	5,493	57.51%	4,276	46.22%	4,224	44.68%	3,547	35.71%	3,549	36.79%	2,834	28.41%	29,331	43.25%
Black - NH	195	1.95%	90	0.94%	155	1.68%	114	1.21%	252	2.54%	226	2.34%	238	2.39%	1,270	1.87%
American Indian - NH	10	0.10%	29	0.30%	31	0.34%	21	0.22%	37	0.37%	22	0.23%	24	0.24%	174	0.26%
Asian - NH	1,648	16.48%	764	8.00%	881	9.52%	1,262	13.35%	2,333	23.49%	2,047	21.22%	924	9.26%	9,859	14.54%
Pacific Islander - NH	24	0.24%	23	0.24%	27	0.29%	52	0.55%	42	0.42%	42	0.44%	30	0.30%	240	0.35%
Other - NH	66	0.66%	71	0.74%	52	0.56%	58	0.61%	64	0.64%	44	0.46%	50	0.50%	405	0.60%
Multiple Races - NH	597	5.97%	546	5.72%	471	5.09%	463	4.90%	558	5.62%	506	5.25%	431	4.32%	3,572	5.27%
<b>18+ Population</b>	<b>7,756</b>		<b>7,688</b>		<b>7,050</b>		<b>7,295</b>		<b>7,478</b>		<b>7,488</b>		<b>7,389</b>		<b>52,144</b>	
Hispanic	1,412	18.21%	1,859	24.18%	2,266	32.14%	2,321	31.82%	2,104	28.14%	2,271	30.33%	3,699	50.06%	15,932	30.55%
White - NH	4,435	57.18%	4,644	60.41%	3,559	50.48%	3,497	47.94%	2,876	38.46%	2,973	39.70%	2,359	31.93%	24,343	46.68%
Black - NH	166	2.14%	84	1.09%	122	1.73%	89	1.22%	199	2.66%	185	2.47%	201	2.72%	1,046	2.01%
American Indian - NH	6	0.08%	24	0.31%	29	0.41%	13	0.18%	25	0.33%	20	0.27%	22	0.30%	139	0.27%
Asian - NH	1,336	13.36%	641	6.71%	720	7.78%	1,004	10.62%	1,884	18.97%	1,644	17.04%	754	7.56%	7,983	11.77%
Pacific Islander - NH	15	0.19%	14	0.18%	15	0.21%	46	0.63%	37	0.49%	36	0.48%	28	0.38%	191	0.37%
Other - NH	48	0.62%	54	0.70%	40	0.57%	31	0.42%	41	0.55%	37	0.49%	41	0.55%	292	0.56%
Multiple Races - NH	338	4.36%	368	4.79%	299	4.24%	294	4.03%	312	4.17%	322	4.30%	285	3.86%	2,218	4.25%
<b>CVAP</b>	<b>7,058</b>		<b>6,593</b>		<b>6,381</b>		<b>6,550</b>		<b>7,005</b>		<b>6,676</b>		<b>5,297</b>		<b>45,560</b>	
Hispanic	1,304	18.48%	1,215	18.43%	1,870	29.31%	1,787	27.28%	1,788	25.52%	1,631	24.43%	1,951	36.83%	11,546	25.34%
White - NH	4,494	63.67%	4,593	69.66%	3,411	53.46%	3,644	55.63%	2,996	42.77%	3,444	51.59%	2,468	46.59%	25,050	54.98%
Black - NH	96	1.36%	130	1.97%	156	2.44%	111	1.69%	167	2.38%	96	1.44%	162	3.06%	918	2.01%
American Indian - NH	0	0.00%	0	0.00%	6	0.09%	5	0.08%	0	0.00%	0	0.00%	1	0.02%	12	0.03%
Asian - NH	851	12.06%	482	7.31%	682	10.69%	749	11.44%	1,779	25.40%	1,300	19.47%	492	9.29%	6,335	13.90%
Pacific Islander - NH	0	0.00%	11	0.17%	6	0.09%	0	0.00%	5	0.07%	0	0.00%	0	0.00%	22	0.05%
Multiple Races - NH	313	4.43%	162	2.46%	250	3.92%	254	3.88%	270	3.85%	205	3.07%	223	4.21%	1,677	3.68%

NH = Not of Hispanic Origin

CVAP = Citizen Voting Age Population



## CONCLUSION / NEXT STEPS

These Maps show possible solutions for the board to consider when complying with the requirement to re-district the trustee areas to balance the total population in each area.

Additional maps can be generated based on input from the board and community. A final decision to approve a boundary map needs to be completed by February 28<sup>th</sup>.

THANK YOU

Questions?  
Input/Suggestions?