

**MORGAN HILL UNIFIED
SCHOOL DISTRICT**

2021-2022 Safety Measures for K-12 Schools

Updated July 27, 2021

Based on [COVID-19 California Department of Public Health \(CDPH\) Guidance for K-12 Schools in California, 2021-22 School Year](#), we are reopening school for full-time instruction, five days a week as indicated by the following guidance

TABLE OF CONTENTS

1 MASKS

2 PHYSICAL DISTANCING VENTILATION RECOMMENDATIONS

3 FEELING SICK & STAYING HOME

4 COVID-19 TESTING CASE REPORTING, CONTACT TRACING AND INVESTIGATION

5 QUARANTINE RECOMMENDATIONS

7 ISOLATION RECOMMENDATIONS HAND HYGIENE RECOMMENDATIONS

8 CLEANING FOOD SERVICE

9 TRANSPORTATION VISITORS & VOLUNTEERS

10 VACCINATION VERIFICATION COVID-19 SAFETY PLAN

BOARD OF EDUCATION

Wendy Sullivan • John Horner • Adam Escoto • Dr. Carol Gittens • Dr. Iván Rosales Montes • Heather Orosco • Mary Patterson

SUPERINTENDENT

Dr. Carmen García

MASKS



- **Masks are required** indoors, regardless of vaccination status, including all adults when sharing indoor spaces with students.
- Masks should be close fitting, covering the entire nose, mouth, and chin. Loose-fitting bandanas, gaiters, and other single-ply fabrics are not acceptable.
- Masks are recommended, but optional, outdoors.
- Signage reminding students, staff, and visitors of the mask requirement will be placed near points of entry.
- Persons exempted from wearing a face covering due to a medical condition must wear a non-restrictive alternative, such as a face shield with a drape on the bottom edge.
- Students who inadvertently forget to bring a face covering to school will be provided one to prevent unnecessary exclusions.
- School personnel will enforce the universal mask requirement.
- The school PBIS team will incorporate mask messaging and enforcement as part of the school culture
- Independent Study is an option for any student in grades TK-12 in situations where the student persistently is unwilling/unable to wear an appropriate face covering.

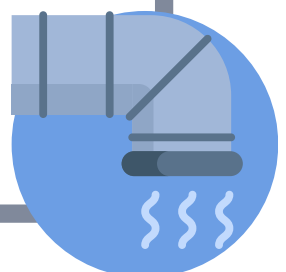
PHYSICAL DISTANCING



- No minimum physical distancing is required, consistent with CDC K-12 School Guidance and CDPH guidelines.
- While indoors, students will continue to spread out, as much as possible.

VENTILATION RECOMMENDATIONS

- The air filtration system circulates fresh air into all the buildings throughout the day, beginning approximately two hours before each building is occupied.
- Air filters in all buildings are changed quarterly.
- Use of outdoor spaces is encouraged.
- For indoor spaces, ventilation will further be optimized by opening doors or windows, as possible.
- Fans may be used with caution around small children who may injure fingers by trying to touch moving blades.

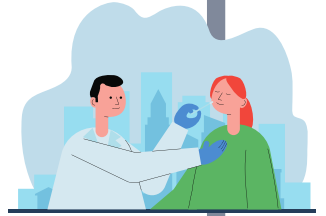


STAY HOME WHEN SICK & GET TESTED



- CDC guidelines for COVID symptoms are posted in/near every building and on large banners at each school's point of entry.
- Staff members and students will self-monitor/screen daily and remain home when any COVID symptom is present.
- Staff or student may return when:
 - At least 24 hours have passed without fever or use of fever-reducing medication; and
 - Other symptoms have improved; and
 - A negative COVID test, OR a healthcare provider has provided documentation that the symptoms are typical of an underlying chronic condition (e.g., allergies or asthma) OR a healthcare provider has confirmed an alternative named diagnosis (e.g., Streptococcal pharyngitis, Coxsackie virus), OR at least 10 days have passed since symptom onset.

COVID 19 TESTING



- All sites will offer voluntary weekly testing for staff and, as-needed, for students

CASE REPORTING, CONTACT TRACING AND INVESTIGATION

- Each COVID-19 positive case in a District setting must be reported to the District Office
- Assigned COVID-19 designees will give guidance based on Santa Clara County Public Health guidelines for notification of close contacts and any isolation or quarantine measures

Quarantine means to restrict movement of an infected individual.

Isolation means to separate an infected individual from all uninfected individuals (even within a home environment)

QUARANTINE RECOMMENDATIONS

for VACCINATED close contacts

- Those who are fully vaccinated AND asymptomatic may continue to attend school or work in-person and self-monitor for symptoms
- If symptoms develop, the student or staff member must stay home and follow procedures for “Stay Home When Sick” (above)

for UNVACCINATED masked close contacts

- If both parties were wearing a mask in an indoor setting, unvaccinated students who are close contacts (more than 15 minutes over a 24-hour period within 6 feet indoors) may continue to attend school for in-person instruction if they:
 - Are asymptomatic;
 - Continue to appropriately mask, as required;
 - Undergo at least twice weekly testing during the 10-day period following exposure, and
 - Quarantine for all extracurricular activities at school, including sports, and activities within the community setting

continued on next page

QUARANTINE RECOMMENDATIONS

for UNVACCINATED unmasked close contacts

- If asymptomatic, must quarantine for 10 days; however,
 - Quarantine can end after day 10 from the date of last exposure without testing; OR
 - Quarantine can end after day 7 if results are negative for a COVID test taken after day 5
- Asymptomatic close contacts must also:
 - Continue daily self-monitoring for symptoms through day 14 from last known exposure; AND
 - Follow all recommended non-pharmaceutical interventions (e.g., wear a mask around others, wash hands, avoid crowds) through day 14 from last known exposure.
 - If symptoms develop during 14-day period, the student or staff member must stay home and follow procedures for “Stay Home When Sick” (above)

ISOLATION RECOMMENDATIONS

Isolation is separation of a COVID infected individual from uninfected individuals

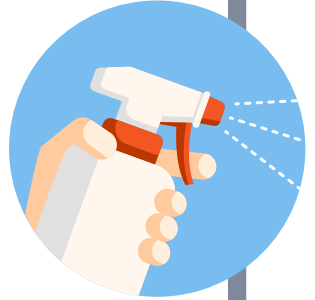
- For both vaccinated and unvaccinated persons with COVID symptoms, it is recommended to isolate from others during the entire quarantine period, even from members in the same household, to prevent transmission.
- Each school site will have a temporary isolation room for students with symptoms as they await pick up from a parent/guardian
- Staff assigned to work with students in the isolation room will use additional PPE, such as gloves and clear face shield
- The isolation room will be disinfected after each use.

HAND HYGIENE RECOMMENDATIONS

- Hand washing will be promoted throughout the day
- Supplies, including soap and hand sanitizers, will be readily available to all students and staff.
- Additional outdoor handwashing stations are installed at school sites.



CLEANING



- Buildings are cleaned once a day
- Disinfecting and cleaning supplies are available in each classroom and work area for additional use, as needed
- Disinfecting will occur in spaces occupied by a reported positive COVID case
- For more information, see [Cleaning and Disinfecting Your Facility](#)

FOOD SERVICE



- Breakfast and lunch will be offered to all students FREE OF CHARGE
- Given the very low risk of transmission from surfaces and shared objects, food service will not be limited to single use items and packaged meals.
- Surfaces that come in contact with food will be washed, rinsed, and sanitized before and after meals.
- Students will be encouraged to eat outdoors, whenever possible.
- When eating indoors, such as in classrooms or in a gymnasium, students should physically distance from one another.

TRANSPORTATION

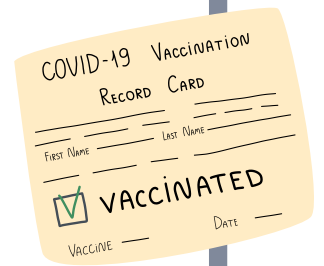


- Students and drivers will wear masks on the bus.
- Windows will be open to maximize ventilation.
- While waiting at the bus stop outdoors, masks are recommended, but optional.

VISITORS & VOLUNTEERS

- Visitors are encouraged to call or email, whenever possible, instead of entering offices to minimize interactions.
- All offices will be open, however; visitors will wear face masks.
- A process for volunteers is under review, with an update by October 1st.
- Until a process for volunteers is identified, only employees will be interacting with students while at school.

VACCINATION VERIFICATION



- At this time, all staff have completed a survey regarding vaccination status but there is not yet a process for students

COVID-19 SAFETY PLAN



- Morgan Hill Unified School District will follow the guidance of CDPH for K-12 Schools
- Morgan Hill Unified School District will update this Safety Plan as needed in accordance with changes to CDPH, CDC, or county guidelines.



Morgan Hill Unified School District
15600 Concord Circle
Morgan Hill, CA 95037
www.mhusd.org

