



MORGAN HILL UNIFIED SCHOOL DISTRICT

MAINTENANCE AND OPERATIONS PLANNING WORKBOOK

NEEDS ASSESSMENT SUMMARY REPORT

April 20, 2021

Prepared By:



1851 Heritage Lane, Suite 210, Sacramento, CA 95815 • P 916.553.4400 • F 916.553.4200 • capitalpm.com

TABLE OF CONTENTS

EXECUTIVE SUMMARY	1
COST SUMMARIES	2
UNIT COST MARK-UPS & ESCALATION RESERVE	10
ADULT EDUCATION	
SUMMARY	11
SITE PLAN	12
NEEDS ASSESSMENT	13
DATA	14
ANN SABRATO HIGH SCHOOL	
SUMMARY	15
SITE PLAN	16
NEEDS ASSESSMENT	17
DATA	18
BARRETT ELEMETARY SCHOOL	
SUMMARY	21
SITE PLAN	22
NEEDS ASSESSMENT	23
DATA	24
BRITTON MIDDLE SCHOOL	
SUMMARY	26
SITE PLAN	27
NEEDS ASSESSMENT	28
DATA	29
CENTRAL HIGH SCHOOL	
SUMMARY	32
SITE PLAN	33
NEEDS ASSESSMENT	34
DATA	35
CHARTER SCHOOL OF MORGAN HILL	
SUMMARY	36
SITE PLAN	37
NEEDS ASSESSMENT	38
DATA	39

DISTRICT OFFICE

SUMMARY	40
SITE PLAN	41
NEEDS ASSESSMENT	42
DATA	43

EL TORO ELEMENTARY SCHOOL

SUMMARY	44
SITE PLAN	45
NEEDS ASSESSMENT	46
DATA	47

JACKSON ELEMENTARY SCHOOL

SUMMARY	48
SITE PLAN	49
NEEDS ASSESSMENT	50
DATA	51

LIVE OAK HIGH SCHOOL

SUMMARY	52
SITE PLAN	53
NEEDS ASSESSMENT	54
DATA	55

LOS PASEOS ELEMENTARY SCHOOL

SUMMARY	58
SITE PLAN	59
NEEDS ASSESSMENT	60
DATA	61

MACHADO SCHOOL

SUMMARY	62
SITE PLAN	63
NEEDS ASSESSMENT	64
DATA	65

MARTIN MURPHY MIDDLE SCHOOL

SUMMARY	66
SITE PLAN	67
NEEDS ASSESSMENT	68
DATA	69

NORSTROM ELEMENTARY SCHOOL

SUMMARY	71
SITE PLAN	72
NEEDS ASSESSMENT	73
DATA	74

PA WALSH STREAM ACADEMY

SUMMARY	75
SITE PLAN	76
NEEDS ASSESSMENT	77
DATA	78

PARADISE VALLEY ELEMENTARY SCHOOL

SUMMARY	79
SITE PLAN	80
NEEDS ASSESSMENT	81
DATA	82

SAN MARTIN / GWINN ENVIRONMENTAL ACADEMY

SUMMARY	83
SITE PLAN	84
NEEDS ASSESSMENT	85
DATA	86

EXECUTIVE SUMMARY

CPM is pleased to provide this report representing a collaborative effort with the District in assessing Facility needs and strategizing on how to best use available funds to meet those needs.

CPM worked with District Staff to inventory and evaluate the condition of facility items categorized into four primary scopes of work; Roofing, Paving, Fire Alarm System and HVAC Mechanical Systems. One of the following four conditions was assigned to each item assessed.

- 0 – No Improvements Necessary
- 1 – Improvements Recommended But Not Necessary (3 to 5 years remaining on typical life cycle)
- 2 – Improvements Needed (1 to 2 years remaining on typical life cycle)
- 3 – Improvements Necessary (end of typical life cycle)

CPM captured this data in a condition assessment workbook customized for the District. This workbook can be used by the District for ongoing inventory control, deferred maintenance planning and future project cost estimating.

CPM used a third-party estimator to review and update unit cost data and to forecast anticipated construction cost escalation. Cost data was evaluated using the District Facilities Modernization Assessment document prepared by Cumming LC in 2013 and updated by OCMI, Inc. in November 2020 to ensure the most accurate costs were used in the preparation of the estimated costs presented in this report.

Total costs reported include raw construction costs, contractor mark-ups, soft costs, and appropriate contingencies. Note, due to unforeseen conditions some potential costs have been excluded from our unit cost estimates, including but not limited to hazardous material consulting, inspection and remediation/disposal costs.

Estimated costs are reported as of June 2021. Please refer to the Escalation Reserve table later in this report to see the impact of compounded escalation costs on work performed at a later date.

Cost Summary by School

Cost Information Summary By School*					
School	No Improvements Necessary	Recommend Improvements But not Necessary	Improvements Needed Nearing End of Life Cycle But Have Time	Improvements Needed Functional But at End of Life Cycle	Total
Adult Education	-	-	-	1,002,960	1,002,960
Ann Sobrato High School	16,433,290	-	181,350	899,160	17,513,800
Barrett Elementary School	2,024,400	2,868,020	-	329,420	5,221,840
Britton Middle School	6,010,380	-	211,580	4,379,220	10,601,180
Central High School	1,762,300	340,510	-	1,300,480	3,403,290
Charter School of Morgan Hill	1,369,590	30,230	-	638,560	2,038,380
District Office	-	-	484,400	1,041,110	1,525,510
El Toro Elementary School	1,375,290	-	991,650	799,490	3,166,430
Jackson Elementary School	3,110,620	-	-	806,100	3,916,720
Live Oak High School	7,091,000	1,615,570	574,370	13,531,220	22,812,160
Los Paseos Elementary School	1,138,880	-	846,440	1,186,100	3,171,420
Machado Learning Center	-	-	73,820	8,050	81,870
Martin Murphy Middle School	2,771,430	30,090	-	4,454,700	7,256,220
Nordstrom Elementary School	2,244,850	-	3,888,620	806,400	6,939,870
PA Walsh Elementary School	2,179,270	470,030	-	1,545,720	4,195,020
Paradise Valley Elementary School	4,417,180	-	-	2,347,180	6,764,360
San Martin/Gwinn Elementary School	1,908,530	-	30,230	5,598,340	7,537,100
Totals:	\$ 53,837,010	\$ 5,354,450	\$ 7,282,460	\$ 40,674,210	\$ 107,148,130

* Cost information reported in June 2021 Dollars. Costs should be escalated if work performed at a later date.

Cost Summary by Scope of Work

Cost Information Summary By Schope of Work*					
Scope of Work	No Improvements Necessary	Recommend Improvements But not Necessary	Improvements Needed Nearing End of Life Cycle But Have Time	Improvements Needed Functional But at End of Life Cycle	Total
Fire Alarm System Upgrade	4,379,350	810,540	-	5,121,510	10,311,400
HVAC	12,342,900	1,675,890	3,743,240	8,442,820	26,204,850
Parking Lot/Pavement	203,380	-	-	10,375,540	10,578,920
Hardcourt/Pavement	1,362,400	-	-	10,556,300	11,918,700
Misc. Pavement	-	-	-	-	-
Roof	35,548,980	2,868,020	3,539,220	6,178,040	48,134,260
Totals:	\$ 53,837,010	\$ 5,354,450	\$ 7,282,460	\$ 40,674,210	\$ 107,148,130

* Cost information reported in June 2021 Dollars. Costs should be escalated if work performed at a later date.

Cost Summary by Scope of Work by School

Cost Information Summary By Scope of Work By School*					
School / Scope of Work	No Improvements Necessary	Recommend Improvements But not Necessary	Improvements Needed Nearing End of Life Cycle But Have Time	Improvements Needed Functional But at End of Life Cycle	Total
Adult Education					
Fire Alarm System Upgrade	-	-	-	129,970	129,970
HVAC	-	-	-	151,150	151,150
Parking Lot/Pavement	-	-	-	406,070	406,070
Hardcourt/Pavement	-	-	-	18,300	18,300
Roof	-	-	-	297,470	297,470
School Total:	\$ -	\$ -	\$ -	\$ 1,002,960	\$ 1,002,960

Ann Sobrato High School					
Fire Alarm System Upgrade	1,985,310	-	-	-	1,985,310
HVAC	3,980,180	-	181,350	-	4,161,530
Parking Lot/Pavement	-	-	-	507,160	507,160
Hardcourt/Pavement	-	-	-	392,000	392,000
Roof	10,467,800	-	-	-	10,467,800
School Total:	\$ 16,433,290	\$ -	\$ 181,350	\$ 899,160	\$ 17,513,800

Barrett Elementary School					
Fire Alarm System Upgrade	499,840	-	-	-	499,840
HVAC	1,171,820	-	-	-	1,171,820
Parking Lot/Pavement	-	-	-	47,830	47,830
Hardcourt/Pavement	-	-	-	281,590	281,590
Roof	352,740	2,868,020	-	-	3,220,760
School Total:	\$ 2,024,400	\$ 2,868,020	\$ -	\$ 329,420	\$ 5,221,840

Cost Summary by Scope of Work by School

Cost Information Summary By Scope of Work By School*					
School / Scope of Work	No Improvements Necessary	Recommend Improvements But not Necessary	Improvements Needed Nearing End of Life Cycle But Have Time	Improvements Needed Functional But at End of Life Cycle	Total
Britton Middle School					
Fire Alarm System Upgrade	1,051,280	-	-	-	1,051,280
HVAC	2,105,010	-	211,580	482,020	2,798,610
Parking Lot/Pavement	65,820	-	-	987,020	1,052,840
Hardcourt/Pavement	1,128,380	-	-	1,310,570	2,438,950
Roof	1,659,890	-	-	1,599,610	3,259,500
School Total:	\$ 6,010,380	\$ -	\$ 211,580	\$ 4,379,220	\$ 10,601,180
Central High School					
Fire Alarm System Upgrade	-	340,510	-	-	340,510
HVAC	466,390	-	-	-	466,390
Parking Lot/Pavement	-	-	-	48,350	48,350
Hardcourt/Pavement	-	-	-	1,252,130	1,252,130
Roof	1,295,910	-	-	-	1,295,910
School Total:	\$ 1,762,300	\$ 340,510	\$ -	\$ 1,300,480	\$ 3,403,290
Charter School of Morgan Hill					
Fire Alarm System Upgrade	-	-	-	302,530	302,530
HVAC	470,440	30,230	-	-	500,670
Parking Lot/Pavement	114,580	-	-	-	114,580
Hardcourt/Pavement	164,750	-	-	-	164,750
Roof	619,820	-	-	336,030	955,850
School Total:	\$ 1,369,590	\$ 30,230	\$ -	\$ 638,560	\$ 2,038,380

Cost Summary by Scope of Work by School

Cost Information Summary By Scope of Work By School*					
School / Scope of Work	No Improvements Necessary	Recommend Improvements But not Necessary	Improvements Needed Nearing End of Life Cycle But Have Time	Improvements Needed Functional But at End of Life Cycle	Total
District Office					
Fire Alarm System Upgrade	-	-	-	-	-
HVAC	-	-	484,400	-	484,400
Parking Lot/Pavement	-	-	-	80,360	80,360
Hardcourt/Pavement	-	-	-	-	-
Roof	-	-	-	960,750	960,750
School Total:	\$ -	\$ -	\$ 484,400	\$ 1,041,110	\$ 1,525,510
El Toro Elementary School					
Fire Alarm System Upgrade	-	-	-	453,970	453,970
HVAC	-	-	991,650	-	991,650
Parking Lot/Pavement	-	-	-	74,280	74,280
Hardcourt/Pavement	-	-	-	271,240	271,240
Roof	1,375,290	-	-	-	1,375,290
School Total:	\$ 1,375,290	\$ -	\$ 991,650	\$ 799,490	\$ 3,166,430
Jackson Elementary School					
Fire Alarm System Upgrade	409,560	-	-	-	409,560
HVAC	982,430	-	-	-	982,430
Parking Lot/Pavement	-	-	-	795,990	795,990
Hardcourt/Pavement	69,270	-	-	10,110	79,380
Roof	1,649,360	-	-	-	1,649,360
School Total:	\$ 3,110,620	\$ -	\$ -	\$ 806,100	\$ 3,916,720

Cost Summary by Scope of Work by School

Cost Information Summary By Scope of Work By School*					
School / Scope of Work	No Improvements Necessary	Recommend Improvements But not Necessary	Improvements Needed Nearing End of Life Cycle But Have Time	Improvements Needed Functional But at End of Life Cycle	Total
Live Oak High School					
Fire Alarm System Upgrade	-	-	-	1,948,990	1,948,990
HVAC	408,190	1,615,570	574,370	4,625,700	7,223,830
Parking Lot/Pavement	-	-	-	2,948,240	2,948,240
Hardcourt/Pavement	-	-	-	2,212,460	2,212,460
Roof	6,682,810	-	-	1,795,830	8,478,640
School Total:	\$ 7,091,000	\$ 1,615,570	\$ 574,370	\$ 13,531,220	\$ 22,812,160
Los Paseos Elementary School					
Fire Alarm System Upgrade	-	-	-	493,610	493,610
HVAC	-	-	846,440	-	846,440
Parking Lot/Pavement	-	-	-	58,480	58,480
Hardcourt/Pavement	-	-	-	199,400	199,400
Roof	1,138,880	-	-	434,610	1,573,490
School Total:	\$ 1,138,880	\$ -	\$ 846,440	\$ 1,186,100	\$ 3,171,420
Machado Learning Center					
Fire Alarm System Upgrade	-	-	-	-	-
HVAC	-	-	-	-	-
Parking Lot/Pavement	-	-	-	-	-
Hardcourt/Pavement	-	-	-	8,050	8,050
Roof	-	-	73,820	-	73,820
School Total:	\$ -	\$ -	\$ 73,820	\$ 8,050	\$ 81,870

Cost Summary by Scope of Work by School

Cost Information Summary By Scope of Work By School*					
School / Scope of Work	No Improvements Necessary	Recommend Improvements But not Necessary	Improvements Needed Nearing End of Life Cycle But Have Time	Improvements Needed Functional But at End of Life Cycle	Total
Martin Murphy Middle School					
Fire Alarm System Upgrade	-	-	-	730,430	730,430
HVAC	404,380	30,090	-	1,715,220	2,149,690
Parking Lot/Pavement	-	-	-	969,040	969,040
Hardcourt/Pavement	-	-	-	1,040,010	1,040,010
Roof	2,367,050	-	-	-	2,367,050
School Total:	\$ 2,771,430	\$ 30,090	\$ -	\$ 4,454,700	\$ 7,256,220
Nordstrom Elementary School					
Fire Alarm System Upgrade	-	-	-	490,750	490,750
HVAC	574,340	-	423,220	-	997,560
Parking Lot/Pavement	12,130	-	-	43,260	55,390
Hardcourt/Pavement	-	-	-	272,390	272,390
Roof	1,658,380	-	3,465,400	-	5,123,780
School Total:	\$ 2,244,850	\$ -	\$ 3,888,620	\$ 806,400	\$ 6,939,870
PA Walsh Elementary School					
Fire Alarm System Upgrade	-	470,030	-	-	470,030
HVAC	-	-	-	725,520	725,520
Parking Lot/Pavement	-	-	-	50,820	50,820
Hardcourt/Pavement	-	-	-	769,380	769,380
Roof	2,179,270	-	-	-	2,179,270
School Total:	\$ 2,179,270	\$ 470,030	\$ -	\$ 1,545,720	\$ 4,195,020

Cost Summary by Scope of Work by School

Cost Information Summary By Scope of Work By School*					
School / Scope of Work	No Improvements Necessary	Recommend Improvements But not Necessary	Improvements Needed Nearing End of Life Cycle But Have Time	Improvements Needed Functional But at End of Life Cycle	Total
Paradise Valley Elementary School					
Fire Alarm System Upgrade	433,360	-	-	-	433,360
HVAC	1,171,360	-	-	-	1,171,360
Parking Lot/Pavement	10,850	-	-	2,347,180	2,358,030
Hardcourt/Pavement	-	-	-	-	-
Roof	2,801,610	-	-	-	2,801,610
School Total:	\$ 4,417,180	\$ -	\$ -	\$ 2,347,180	\$ 6,764,360
San Martin/Gwinn Elementary School					
Fire Alarm System Upgrade	-	-	-	571,260	571,260
HVAC	608,360	-	30,230	743,210	1,381,800
Parking Lot/Pavement	-	-	-	1,011,460	1,011,460
Hardcourt/Pavement	-	-	-	2,518,670	2,518,670
Roof	1,300,170	-	-	753,740	2,053,910
School Total:	\$ 1,908,530	\$ -	\$ 30,230	\$ 5,598,340	\$ 7,537,100
Total All Schools:	\$ 53,837,010	\$ 5,354,450	\$ 7,282,460	\$ 40,674,210	\$ 107,148,130

* Cost information reported in June 2021 Dollars. Costs should be escalated if work performed at a later date.

Unit Cost Mark-Ups and Escalation Reserve

Typical Cost Markups

General Contractor Mark-Ups

Bonds and Insurance	3.5%
General Requirements	9%
Design Phase/Allowance Contingency	10%
Profit	4%
Total Contractor Mark-Ups	26.5%

Applicable to modernization projects, reduce for trade specific projects.

Additional Soft Costs

Soft Costs - Modernization	30%
Total Additional Soft Costs	30%

Additional Contingencies

Construction Contingency	10%
Project Contingency	2%
Owner Contingency	6%
Total Additional Contingencies	18%

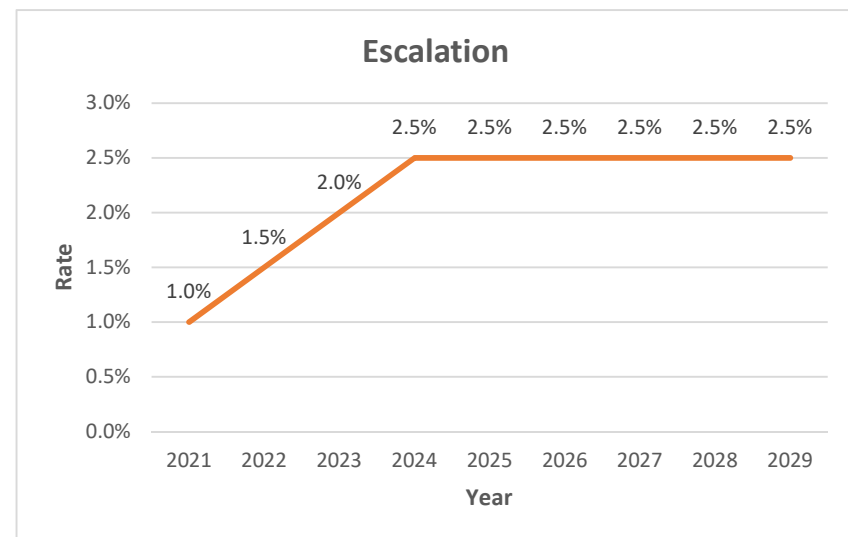
Typically 5% - 8% for added Owner Scope
Contingencies based on Hard Construction Costs Only

Escalation Reserve

See Table

Escalation Rates		
Year	Rate	Compounded
2021	1.0%	1.00%
2022	1.5%	2.51%
2023	2.0%	4.57%
2024	2.5%	7.18%
2025	2.5%	9.86%
2026	2.5%	12.61%
2027	2.5%	15.42%
2028	2.5%	18.31%
2029	2.5%	21.26%

Updated: 04/06/2021





**ADULT EDUCATION
17960 MONTEREY STREET
MORGAN HILL, CA 95037**

SUMMARY

- Built in 1978
- 4 Regular classrooms
- 9 Total classrooms
- 12,397 SF of buildings
- 135 Students

The following projects are the higher priority scopes of work from a facility management perspective.

- Replace roofing
- Replace mechanical systems
- Replacement of fire alarm system
- Replace pavement

**ADULT EDUCATION
17960 MONTEREY STREET
MORGAN HILL, CA 95037**

SITE PLAN



ADULT EDUCATION

Needs Assessment Cost Summary

Cost Information Summary By Scope of Work By School*					
School / Scope of Work	No Improvements Necessary	Recommend Improvements But not Necessary	Improvements Needed Nearing End of Life Cycle But Have Time	Improvements Needed Functional But at End of Life Cycle	Total
Adult Education					
Fire Alarm System Upgrade	-	-	-	129,970	129,970
HVAC	-	-	-	151,150	151,150
Parking Lot/Pavement	-	-	-	406,070	406,070
Hardcourt/Pavement	-	-	-	18,300	18,300
Roof	-	-	-	297,470	297,470
School Total:	\$ -	\$ -	\$ -	\$ 1,002,960	\$ 1,002,960

ADULT EDUCATION

DATA

School	Building ID	Building Description	Room ID	Item	Item Type	Item Sub-Type	Qty	UOM	Assessed Condition	Estimated Cost (Rounded)
Adult Education	B1	Classrooms (1-4)		Roof	Asphalt Shingle		5,621	SQFT	3 - Critical	\$ 126,290
Adult Education	B2	Admin, Classrooms (2-5)		Roof	Asphalt Shingle		6,493	SQFT	3 - Critical	\$ 145,880
Adult Education	B3	Classroom		Roof	Asphalt Shingle		1,126	SQFT	3 - Critical	\$ 25,300
Adult Education				Parking Lot/Pavement	AutoPavement	Remove & Replace	17,214	SQFT	3 - Critical	\$ 406,070
Adult Education				Hardcourt/Pavement	Hardcourt	Seal/Stripe	4,886	SQFT	3 - Critical	\$ 18,300
Adult Education				Fire Alarm System Upgrade	Continuation School		12,397	SQFT	3 - Critical	\$ 129,970
Adult Education	B1	Classrooms (1-4)	1	HVAC	RoofTopPackage	4-Ton	1	EA	3 - Critical	\$ 30,230
Adult Education	B1	Classrooms (1-4)	2	HVAC	RoofTopPackage	4-Ton	1	EA	3 - Critical	\$ 30,230
Adult Education	B1	Classrooms (1-4)	3	HVAC	RoofTopPackage	4-Ton	1	EA	3 - Critical	\$ 30,230
Adult Education	B1	Classrooms (1-4)	4	HVAC	RoofTopPackage	4-Ton	1	EA	3 - Critical	\$ 30,230
Adult Education			Library	HVAC	RoofTopPackage	4-Ton	1	EA	3 - Critical	\$ 30,230



**ANN SOBRATO HIGH SCHOOL
401 BURNETT AVENUE
MORGAN HILL, CA 95037**

SUMMARY

- Built in 1978
- 120 acre site
- 74 Regular classrooms
- 189,360 SF of buildings
- 1,440 Students

The following projects are the higher priority scopes of work from a facility management perspective.

- Replace roofing
- Replace mechanical systems
- Replacement of fire alarm system
- Replace pavement

**ANN SOBRATO HIGH SCHOOL
401 BURNETT AVENUE
MORGAN HILL, CA 95037**

SITE PLAN



ANN SOBRATO HIGH SCHOOL

Needs Assessment Cost Summary

Cost Information Summary By Scope of Work By School*					
School / Scope of Work	No Improvements Necessary	Recommend Improvements But not Necessary	Improvements Needed Nearing End of Life Cycle But Have Time	Improvements Needed Functional But at End of Life Cycle	Total
Ann Sobrato High School					
Fire Alarm System Upgrade	1,985,310	-	-	-	1,985,310
HVAC	3,980,180	-	181,350	-	4,161,530
Parking Lot/Pavement	-	-	-	507,160	507,160
Hardcourt/Pavement	-	-	-	392,000	392,000
Roof	10,467,800	-	-	-	10,467,800
School Total:	\$ 16,433,290	\$ -	\$ 181,350	\$ 899,160	\$ 17,513,800

ANN SOBRATO HIGH SCHOOL

DATA

School	Building ID	Building Description	Room ID	Item	Item Type	Item Sub-Type	Qty	UOM	Assessed Condition	Estimated Cost (Rounded)
Ann Sobrato High School	B1	Administration		Roof	Metal		8,391	SQFT	0 - No Improvement Required	\$ 408,460
Ann Sobrato High School	B2	Classroom Wings B-E		Roof	Metal		130,603	SQFT	0 - No Improvement Required	\$ 6,357,380
Ann Sobrato High School	B3	PE, Dance		Roof	Metal		22,095	SQFT	0 - No Improvement Required	\$ 1,075,530
Ann Sobrato High School	B4	Gymnasium, Food Services		Roof	TPO Single Ply		24,779	SQFT	0 - No Improvement Required	\$ 1,113,390
Ann Sobrato High School	B4	Gymnasium, Food Services		Roof	Metal		12,249	SQFT	0 - No Improvement Required	\$ 596,240
Ann Sobrato High School	B5	Performing Arts		Roof	Metal		6,637	SQFT	0 - No Improvement Required	\$ 323,050
Ann Sobrato High School	B5	Performing Arts		Roof	Metal		6,637	SQFT	0 - No Improvement Required	\$ 323,050
Ann Sobrato High School	B5	Performing Arts		Roof	Metal		3,427	SQFT	0 - No Improvement Required	\$ 166,820
Ann Sobrato High School	B6	Portables 1-2		Roof	Metal		2,134	SQFT	0 - No Improvement Required	\$ 103,880
Ann Sobrato High School				Parking Lot/Pavement	AutoPavement	Seal/Stripe	78,633	SQFT	3 - Critical	\$ 106,000
Ann Sobrato High School				Parking Lot/Pavement	AutoPavement	Seal/Stripe	87,814	SQFT	3 - Critical	\$ 118,370
Ann Sobrato High School				Parking Lot/Pavement	AutoPavement	Seal/Stripe	42,347	SQFT	3 - Critical	\$ 57,080
Ann Sobrato High School				Hardcourt/Pavement	Hardcourt	Seal/Stripe	39,323	SQFT	3 - Critical	\$ 147,240
Ann Sobrato High School				Hardcourt/Pavement	Hardcourt	Seal/Stripe	65,366	SQFT	3 - Critical	\$ 244,760
Ann Sobrato High School				Parking Lot/Pavement	AutoPavement	Seal/Stripe	136,427	SQFT	3 - Critical	\$ 183,900
Ann Sobrato High School				Parking Lot/Pavement	AutoPavement	Seal/Stripe	31,016	SQFT	3 - Critical	\$ 41,810
Ann Sobrato High School				Fire Alarm System Upgrade	High School		189,360	SQFT	0 - No Improvement Required	\$ 1,985,310
Ann Sobrato High School	B1	Administration	Admin	HVAC	RoofTopPackage	2-Ton	1	EA	2 - Necessary But Not Critical	\$ 15,110
Ann Sobrato High School	B1	Administration	Admin	HVAC	RoofTopPackage	5-Ton	1	EA	2 - Necessary But Not Critical	\$ 37,780
Ann Sobrato High School	B1	Administration	Admin	HVAC	RoofTopPackage	3-Ton	1	EA	2 - Necessary But Not Critical	\$ 22,670
Ann Sobrato High School	B1	Administration	Admin	HVAC	RoofTopPackage	4-Ton	1	EA	2 - Necessary But Not Critical	\$ 30,230
Ann Sobrato High School	B1	Administration	Admin	HVAC	RoofTopPackage	3-Ton	1	EA	2 - Necessary But Not Critical	\$ 22,670
Ann Sobrato High School	B1	Administration	Admin	HVAC	RoofTopPackage	5-Ton	1	EA	2 - Necessary But Not Critical	\$ 37,780
Ann Sobrato High School	B1	Administration	B009/B011	HVAC	HeatPump	2-Ton	1	EA	2 - Necessary But Not Critical	\$ 15,110
Ann Sobrato High School	B1	Administration	B015/B016	HVAC	HeatPump	1.5-Ton	1	EA	0 - No Improvement Required	\$ 11,330
Ann Sobrato High School	B1	Administration	B022/B017	HVAC	HeatPump	7-Ton	1	EA	0 - No Improvement Required	\$ 52,890
Ann Sobrato High School	B1	Administration	B116	HVAC	HeatPump	5-Ton	1	EA	0 - No Improvement Required	\$ 37,780
Ann Sobrato High School	B1	Administration	B114	HVAC	HeatPump	7-Ton	1	EA	0 - No Improvement Required	\$ 52,890
Ann Sobrato High School	B1	Administration	B113	HVAC	HeatPump	4-Ton	1	EA	0 - No Improvement Required	\$ 30,230
Ann Sobrato High School	B1	Administration	B104	HVAC	HeatPump	5-Ton	1	EA	0 - No Improvement Required	\$ 37,780
Ann Sobrato High School	B1	Administration	B105	HVAC	HeatPump	5-Ton	1	EA	0 - No Improvement Required	\$ 37,780
Ann Sobrato High School	B1	Administration	B119	HVAC	HeatPump	2.5-Ton	1	EA	0 - No Improvement Required	\$ 18,890
Ann Sobrato High School	B1	Administration	B111	HVAC	HeatPump	6-Ton	1	EA	0 - No Improvement Required	\$ 45,340
Ann Sobrato High School	B1	Administration	B110	HVAC	HeatPump	1.5-Ton	1	EA	0 - No Improvement Required	\$ 11,330
Ann Sobrato High School	B1	Administration	B109	HVAC	HeatPump	5-Ton	1	EA	0 - No Improvement Required	\$ 37,780
Ann Sobrato High School	B1	Administration	B108	HVAC	HeatPump	5-Ton	1	EA	0 - No Improvement Required	\$ 37,780
Ann Sobrato High School	B1	Administration	B107	HVAC	HeatPump	4-Ton	1	EA	0 - No Improvement Required	\$ 30,230
Ann Sobrato High School	B1	Administration	B003	HVAC	AirHandlingUnit	1.5-Ton	1	EA	0 - No Improvement Required	\$ 9,530
Ann Sobrato High School	B1	Administration	B012	HVAC	HeatPump	2.5-Ton	1	EA	0 - No Improvement Required	\$ 18,890
Ann Sobrato High School	B1	Administration	B025/B023	HVAC	HeatPump	5-Ton	1	EA	0 - No Improvement Required	\$ 37,780
Ann Sobrato High School	B1	Administration	B013	HVAC	HeatPump	2.5-Ton	1	EA	0 - No Improvement Required	\$ 18,890
Ann Sobrato High School	B1	Administration	B115	HVAC	HeatPump	1.5-Ton	1	EA	0 - No Improvement Required	\$ 11,330
Ann Sobrato High School	B1	Administration	B102	HVAC	HeatPump	4-Ton	1	EA	0 - No Improvement Required	\$ 30,230
Ann Sobrato High School	B1	Administration	B101	HVAC	HeatPump	5-Ton	1	EA	0 - No Improvement Required	\$ 37,780
Ann Sobrato High School	B1	Administration	B103	HVAC	HeatPump	5-Ton	1	EA	0 - No Improvement Required	\$ 37,780
Ann Sobrato High School	B1	Administration	B118	HVAC	AirHandlingUnit	1.5-Ton	1	EA	0 - No Improvement Required	\$ 9,530
Ann Sobrato High School	B1	Administration	B106	HVAC	HeatPump	5-Ton	1	EA	0 - No Improvement Required	\$ 37,780
Ann Sobrato High School	B1	Administration	C119	HVAC	HeatPump	2.5-Ton	1	EA	0 - No Improvement Required	\$ 18,890
Ann Sobrato High School	B1	Administration	C111	HVAC	HeatPump	6-Ton	1	EA	0 - No Improvement Required	\$ 45,340
Ann Sobrato High School	B1	Administration	C105	HVAC	HeatPump	5-Ton	1	EA	0 - No Improvement Required	\$ 37,780
Ann Sobrato High School	B1	Administration	C104	HVAC	HeatPump	5-Ton	1	EA	0 - No Improvement Required	\$ 37,780
Ann Sobrato High School	B1	Administration	C113	HVAC	HeatPump	4-Ton	1	EA	0 - No Improvement Required	\$ 30,230
Ann Sobrato High School	B1	Administration	C109	HVAC	HeatPump	5-Ton	1	EA	0 - No Improvement Required	\$ 37,780
Ann Sobrato High School	B1	Administration	C110	HVAC	HeatPump	1.5-Ton	1	EA	0 - No Improvement Required	\$ 11,330
Ann Sobrato High School	B1	Administration	C107	HVAC	HeatPump	4-Ton	1	EA	0 - No Improvement Required	\$ 30,230
Ann Sobrato High School	B1	Administration	C108	HVAC	HeatPump	5-Ton	1	EA	0 - No Improvement Required	\$ 37,780

DATA

Capital Program Management, Inc.
Plan. Execute. Succeed.

ANN SOBRATO HIGH SCHOOL

DATA

School	Building ID	Building Description	Room ID	Item	Item Type	Item Sub-Type	Qty	UOM	Assessed Condition	Estimated Cost (Rounded)
Ann Sobrato High School	B1	Administration	E010	HVAC	HeatPump	5-Ton	1	EA	0 - No Improvement Required	\$ 37,780
Ann Sobrato High School	B1	Administration	E010	HVAC	HeatPump	5-Ton	1	EA	0 - No Improvement Required	\$ 37,780
Ann Sobrato High School	B1	Administration	E008/E009	HVAC	HeatPump	1.5-Ton	1	EA	0 - No Improvement Required	\$ 11,330
Ann Sobrato High School	B1	Administration	E014	HVAC	HeatPump	7.5-Ton	1	EA	0 - No Improvement Required	\$ 56,670
Ann Sobrato High School	B1	Administration	E015	HVAC	HeatPump	5-Ton	1	EA	0 - No Improvement Required	\$ 37,780
Ann Sobrato High School	B1	Administration	E107	HVAC	HeatPump	4-Ton	1	EA	0 - No Improvement Required	\$ 30,230
Ann Sobrato High School	B1	Administration	E108	HVAC	HeatPump	5-Ton	1	EA	0 - No Improvement Required	\$ 37,780
Ann Sobrato High School	B1	Administration	Band Room	HVAC	AirHandlingUnit	3,600cfm	1	EA	0 - No Improvement Required	\$ 11,230
Ann Sobrato High School	B1	Administration	Band Room	HVAC	HeatPump	2.5-Ton	1	EA	0 - No Improvement Required	\$ 18,890
Ann Sobrato High School	B1	Administration	BR Offices	HVAC	AirHandlingUnit	1-Ton	1	EA	0 - No Improvement Required	\$ 6,350
Ann Sobrato High School	B1	Administration	BR Offices	HVAC	HeatPump	1-Ton	1	EA	0 - No Improvement Required	\$ 7,560
Ann Sobrato High School	B1	Administration	Server Room	HVAC	AirHandlingUnit	1.5-Ton	1	EA	0 - No Improvement Required	\$ 9,530
Ann Sobrato High School	B1	Administration	Band Room	HVAC	HeatPump	5-Ton	1	EA	0 - No Improvement Required	\$ 37,780
Ann Sobrato High School	B1	Administration	Band Room	HVAC	HeatPump	4-Ton	1	EA	0 - No Improvement Required	\$ 30,230
Ann Sobrato High School	B1	Administration	Drama C/R	HVAC	ReturnAirUnit	5-Ton	1	EA	0 - No Improvement Required	\$ 6,740
Ann Sobrato High School	B1	Administration	Makeup Room	HVAC	ReturnAirUnit	4-Ton	1	EA	0 - No Improvement Required	\$ 5,990
Ann Sobrato High School	B1	Administration	Main Theater	HVAC	ReturnAirUnit	30-Ton	1	EA	0 - No Improvement Required	\$ 22,470
Ann Sobrato High School	B1	Administration	Elect. F015	HVAC	AirHandlingUnit	1.5-Ton	1	EA	0 - No Improvement Required	\$ 9,530
Ann Sobrato High School	B1	Administration	Theater Control	HVAC	AirHandlingUnit	1.5-Ton	1	EA	0 - No Improvement Required	\$ 9,530
Ann Sobrato High School	B1	Administration	Theater Control	HVAC	AirHandlingUnit	1.5-Ton	1	EA	0 - No Improvement Required	\$ 9,530
Ann Sobrato High School	B1	Administration	Theater Control	HVAC	SplitSystemCondenser	1.5-Ton	1	EA	0 - No Improvement Required	\$ 5,620
Ann Sobrato High School	B1	Administration	Theater Control	HVAC	SplitSystemCondenser	1.5-Ton	1	EA	0 - No Improvement Required	\$ 5,620
Ann Sobrato High School	B1	Administration	F035 Lighting	HVAC	AirHandlingUnit	7.5-Ton	1	EA	0 - No Improvement Required	\$ 47,630
Ann Sobrato High School	B1	Administration	F035 Lighting	HVAC	SplitSystemCondenser	5-Ton	1	EA	0 - No Improvement Required	\$ 14,040
Ann Sobrato High School	B1	Administration	Prop Room	HVAC	HeatPump	3-Ton	1	EA	0 - No Improvement Required	\$ 22,670
Ann Sobrato High School	B1	Administration	Stage	HVAC	HeatPump	25-Ton	1	EA	0 - No Improvement Required	\$ 188,910
Ann Sobrato High School	B1	Administration		HVAC	AirHandlingUnit	7.5-Ton	1	EA	0 - No Improvement Required	\$ 47,630
Ann Sobrato High School	B1	Administration	Concessions	HVAC	HeatPump	1-Ton	1	EA	0 - No Improvement Required	\$ 7,560
Ann Sobrato High School	B1	Administration	Lobby	HVAC	HeatPump	5-Ton	1	EA	0 - No Improvement Required	\$ 37,780
Ann Sobrato High School	B1	Administration	Library Office	HVAC	ReturnAirUnit	5-Ton	1	EA	0 - No Improvement Required	\$ 6,740
Ann Sobrato High School	B1	Administration	Library	HVAC	ReturnAirUnit	25-Ton	1	EA	0 - No Improvement Required	\$ 5,240
Ann Sobrato High School	B1	Administration	Library Classrm	HVAC	ReturnAirUnit	10-Ton	1	EA	0 - No Improvement Required	\$ 9,360
Ann Sobrato High School	B1	Administration	Photography	HVAC	ReturnAirUnit	7.5-Ton	1	EA	0 - No Improvement Required	\$ 7,860
Ann Sobrato High School	B1	Administration	Restrooms	HVAC	ReturnAirUnit	1.5-Ton	1	EA	0 - No Improvement Required	\$ 4,870
Ann Sobrato High School	B1	Administration	Offices	HVAC	ReturnAirUnit	4-Ton	1	EA	0 - No Improvement Required	\$ 5,990
Ann Sobrato High School	B1	Administration	MDF	HVAC	SplitSystemCondenser	7-Ton	1	EA	0 - No Improvement Required	\$ 20,600
Ann Sobrato High School	B1	Administration	MDF	HVAC	SplitSystemCondenser	7-Ton	1	EA	0 - No Improvement Required	\$ 20,600
Ann Sobrato High School	B1	Administration	Kitchen Dry Storage	HVAC	ReturnAirUnit	1.5-Ton	1	EA	0 - No Improvement Required	\$ 4,870
Ann Sobrato High School	B1	Administration	Metal Shop	HVAC	ReturnAirUnit	5-Ton	1	EA	0 - No Improvement Required	\$ 6,740
Ann Sobrato High School	B1	Administration	Metal Shop	HVAC	ReturnAirUnit	5-Ton	1	EA	0 - No Improvement Required	\$ 6,740
Ann Sobrato High School	B1	Administration	Kitchen Prep	HVAC	ReturnAirUnit	5-Ton	1	EA	0 - No Improvement Required	\$ 6,740
Ann Sobrato High School	B1	Administration	Kitchen Serving	HVAC	ReturnAirUnit	25-Ton	1	EA	0 - No Improvement Required	\$ 5,240
Ann Sobrato High School	B1	Administration	Concessions	HVAC	ReturnAirUnit	1.5-Ton	1	EA	0 - No Improvement Required	\$ 4,870
Ann Sobrato High School	B1	Administration	Electrical Room	HVAC	ReturnAirUnit	1.5-Ton	1	EA	0 - No Improvement Required	\$ 4,870
Ann Sobrato High School	B1	Administration	Gym Lobby	HVAC	ReturnAirUnit	7-Ton	1	EA	0 - No Improvement Required	\$ 7,490
Ann Sobrato High School	B1	Administration	Gym	HVAC	ReturnAirUnit	30-Ton	1	EA	0 - No Improvement Required	\$ 22,470
Ann Sobrato High School	B1	Administration	Gym	HVAC	ReturnAirUnit	30-Ton	1	EA	0 - No Improvement Required	\$ 22,470
Ann Sobrato High School	B1	Administration	Gym	HVAC	ReturnAirUnit	30-Ton	1	EA	0 - No Improvement Required	\$ 22,470
Ann Sobrato High School	B1	Administration	Boys/Girls Locker Rooms	HVAC	ReturnAirUnit	50-Ton	1	EA	0 - No Improvement Required	\$ 41,190
Ann Sobrato High School	B1	Administration	Dance Hall	HVAC	ReturnAirUnit	10-Ton	1	EA	0 - No Improvement Required	\$ 9,360
Ann Sobrato High School	B1	Administration	Boiler	HVAC	Boiler	Hydronic-1 MBTU	1	EA	0 - No Improvement Required	\$ 20,600
Ann Sobrato High School	B1	Administration	Boiler	HVAC	Boiler	Hydronic-1 MBTU	1	EA	0 - No Improvement Required	\$ 20,600
Ann Sobrato High School	B1	Administration	Cooling Tower	HVAC	CoolingTower	10-Ton	1	EA	0 - No Improvement Required	\$ 84,250
Ann Sobrato High School	B1	Administration	Cooling Tower	HVAC	CoolingTower	10-Ton	1	EA	0 - No Improvement Required	\$ 84,250



**BARRETT ELEMETARY SCHOOL
895 BARRETT AVE
MORGAN HILL, CA**

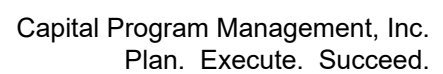
SUMMARY

- Built in 2001
- 9.64 acre site
- 25 Regular classrooms
- 33 Total classrooms
- 47,845 SF of buildings
- 393 Students

The following projects are the higher priority scopes of work from a facility management perspective.

- Replace roofing
- Replace mechanical systems
- Replacement of fire alarm system
- Replace pavement

SITE PLAN



BARRETT ELEMENTARY SCHOOL **Needs Assessment Cost Summary**

Cost Information Summary By Scope of Work By School*					
School / Scope of Work	No Improvements Necessary	Recommend Improvements But not Necessary	Improvements Needed Nearing End of Life Cycle But Have Time	Improvements Needed Functional But at End of Life Cycle	Total
Barrett Elementary School					
Fire Alarm System Upgrade	499,840	-	-	-	499,840
HVAC	1,171,820	-	-	-	1,171,820
Parking Lot/Pavement	-	-	-	47,830	47,830
Hardcourt/Pavement	-	-	-	281,590	281,590
Roof	352,740	2,868,020	-	-	3,220,760
School Total:	\$ 2,024,400	\$ 2,868,020	\$ -	\$ 329,420	\$ 5,221,840

BARRETT ELEMENTARY SCHOOL

DATA

School	Building ID	Building Description	Room ID	Item	Item Type	Item Sub-Type	Qty	UOM	Assessed Condition	Estimated Cost (Rounded)
Barrett Elementary School	B1	MPR		Roof	Metal		7,246	SQFT	0 - No Improvement Required	\$ 352,740
Barrett Elementary School	B2	Administration		Roof	Metal		10,236	SQFT	1 - Recommend Improvement	\$ 498,250
Barrett Elementary School	B3	Classrooms 19-26		Roof	Metal		17,149	SQFT	1 - Recommend Improvement	\$ 834,790
Barrett Elementary School	B4	Classrooms 9-18		Roof	Metal		16,242	SQFT	1 - Recommend Improvement	\$ 790,600
Barrett Elementary School	B5	Classrooms 1-8		Roof	Metal		15,292	SQFT	1 - Recommend Improvement	\$ 744,380
Barrett Elementary School				Parking Lot/Pavement	AutoPavement	Seal/Stripe	35,484	SQFT	3 - Critical	\$ 47,830
Barrett Elementary School				Hardcourt/Pavement	Hardcourt	Seal/Stripe	6,200	SQFT	3 - Critical	\$ 23,220
Barrett Elementary School				Hardcourt/Pavement	Hardcourt	Seal/Stripe	8,000	SQFT	3 - Critical	\$ 29,960
Barrett Elementary School				Hardcourt/Pavement	Hardcourt	Seal/Stripe	61,000	SQFT	3 - Critical	\$ 228,410
Barrett Elementary School				Fire Alarm System Upgrade	Elementary School		47,675	SQFT	0 - No Improvement Required	\$ 499,840
Barrett Elementary School	B5	Classrooms 1-8	Room 1	HVAC	RoofTopPackage	4-Ton	1	EA	0 - No Improvement Required	\$ 30,230
Barrett Elementary School	B5	Classrooms 1-8	Room 2	HVAC	RoofTopPackage	4-Ton	1	EA	0 - No Improvement Required	\$ 30,230
Barrett Elementary School	B5	Classrooms 1-8	Room 3	HVAC	RoofTopPackage	4-Ton	1	EA	0 - No Improvement Required	\$ 30,230
Barrett Elementary School	B5	Classrooms 1-8	Room 4	HVAC	RoofTopPackage	2-Ton	1	EA	0 - No Improvement Required	\$ 15,110
Barrett Elementary School	B5	Classrooms 1-8	Room 5	HVAC	RoofTopPackage	2-Ton	1	EA	0 - No Improvement Required	\$ 15,110
Barrett Elementary School	B5	Classrooms 1-8	Room 6	HVAC	RoofTopPackage	2-Ton	1	EA	0 - No Improvement Required	\$ 15,110
Barrett Elementary School	B5	Classrooms 1-8	Room 7	HVAC	RoofTopPackage	2-Ton	1	EA	0 - No Improvement Required	\$ 15,110
Barrett Elementary School	B5	Classrooms 1-8	Room 8	HVAC	RoofTopPackage	2-Ton	1	EA	0 - No Improvement Required	\$ 15,110
Barrett Elementary School	B4	Classrooms 9-18	Room 9	HVAC	RoofTopPackage	2-Ton	1	EA	0 - No Improvement Required	\$ 15,110
Barrett Elementary School	B4	Classrooms 9-18	Room 10	HVAC	RoofTopPackage	2-Ton	1	EA	0 - No Improvement Required	\$ 15,110
Barrett Elementary School	B4	Classrooms 9-18	Room 11	HVAC	RoofTopPackage	2-Ton	1	EA	0 - No Improvement Required	\$ 15,110
Barrett Elementary School	B4	Classrooms 9-18	Room 12	HVAC	RoofTopPackage	2-Ton	1	EA	0 - No Improvement Required	\$ 15,110
Barrett Elementary School	B4	Classrooms 9-18	Room 13	HVAC	WaterSourceHeatPump	2-Ton	1	EA	0 - No Improvement Required	\$ 15,110
Barrett Elementary School	B4	Classrooms 9-18	Room 14	HVAC	WaterSourceHeatPump	2-Ton	1	EA	0 - No Improvement Required	\$ 15,110
Barrett Elementary School	B4	Classrooms 9-18	Room 15	HVAC	WaterSourceHeatPump	2-Ton	1	EA	0 - No Improvement Required	\$ 15,110
Barrett Elementary School	B4	Classrooms 9-18	Room 16	HVAC	WaterSourceHeatPump	2-Ton	1	EA	0 - No Improvement Required	\$ 15,110
Barrett Elementary School	B4	Classrooms 9-18	Room 17	HVAC	WaterSourceHeatPump	2-Ton	1	EA	0 - No Improvement Required	\$ 15,110
Barrett Elementary School	B4	Classrooms 9-18	Room 18	HVAC	WaterSourceHeatPump	2-Ton	1	EA	0 - No Improvement Required	\$ 15,110
Barrett Elementary School	B3	Classrooms 19-26	Room 19	HVAC	WaterSourceHeatPump	2-Ton	1	EA	0 - No Improvement Required	\$ 15,110
Barrett Elementary School	B3	Classrooms 19-26	Room 20	HVAC	WaterSourceHeatPump	2-Ton	1	EA	0 - No Improvement Required	\$ 15,110
Barrett Elementary School	B3	Classrooms 19-26	Room 21	HVAC	WaterSourceHeatPump	2-Ton	1	EA	0 - No Improvement Required	\$ 15,110
Barrett Elementary School	B3	Classrooms 19-26	Room 22	HVAC	WaterSourceHeatPump	2-Ton	1	EA	0 - No Improvement Required	\$ 15,110
Barrett Elementary School	B3	Classrooms 19-26	Room 23	HVAC	WaterSourceHeatPump	2-Ton	1	EA	0 - No Improvement Required	\$ 15,110
Barrett Elementary School	B3	Classrooms 19-26	Room 24	HVAC	WaterSourceHeatPump	2-Ton	1	EA	0 - No Improvement Required	\$ 15,110
Barrett Elementary School	B3	Classrooms 19-26	Room 25	HVAC	WaterSourceHeatPump	2-Ton	1	EA	0 - No Improvement Required	\$ 15,110
Barrett Elementary School	B3	Classrooms 19-26	Room 26	HVAC	WaterSourceHeatPump	2-Ton	1	EA	0 - No Improvement Required	\$ 15,110
Barrett Elementary School	B1	MPR	Stage (Left)	HVAC	WaterSourceHeatPump	3-Ton	1	EA	0 - No Improvement Required	\$ 22,670
Barrett Elementary School	B1	MPR	Stage (Left)	HVAC	WaterSourceHeatPump	1.5-Ton	1	EA	0 - No Improvement Required	\$ 11,330
Barrett Elementary School	B1	MPR	Stage (Right)	HVAC	WaterSourceHeatPump	1.5-Ton	1	EA	0 - No Improvement Required	\$ 11,330
Barrett Elementary School	B1	MPR	Stage (Right)	HVAC	WaterSourceHeatPump	2-Ton	1	EA	0 - No Improvement Required	\$ 15,110
Barrett Elementary School	B1	MPR	MPR	HVAC	WaterSourceHeatPump	2-Ton	1	EA	0 - No Improvement Required	\$ 15,110
Barrett Elementary School	B1	MPR	MPR	HVAC	WaterSourceHeatPump	2-Ton	1	EA	0 - No Improvement Required	\$ 15,110
Barrett Elementary School	B1	MPR	Kitchen	HVAC	WaterSourceHeatPump	2-Ton	1	EA	0 - No Improvement Required	\$ 15,110
Barrett Elementary School	B2	Administration	B-Elect.	HVAC	WaterSourceHeatPump	2-Ton	1	EA	0 - No Improvement Required	\$ 15,110
Barrett Elementary School	B2	Administration	C-Elect.	HVAC	WaterSourceHeatPump	2-Ton	1	EA	0 - No Improvement Required	\$ 15,110
Barrett Elementary School	B2	Administration	D-Elect.	HVAC	WaterSourceHeatPump	2-Ton	1	EA	0 - No Improvement Required	\$ 15,110
Barrett Elementary School	B2	Administration	Admin Lobby	HVAC	WaterSourceHeatPump	4-Ton	1	EA	0 - No Improvement Required	\$ 30,230
Barrett Elementary School	B2	Administration	Principal Office	HVAC	WaterSourceHeatPump	3.5-Ton	1	EA	0 - No Improvement Required	\$ 26,450
Barrett Elementary School	B2	Administration	Nurse Office	HVAC	WaterSourceHeatPump	2.5-Ton	1	EA	0 - No Improvement Required	\$ 18,890
Barrett Elementary School	B2	Administration	Admin Hallway	HVAC	WaterSourceHeatPump	2-Ton	1	EA	0 - No Improvement Required	\$ 15,110
Barrett Elementary School	B2	Administration	Staff Room	HVAC	WaterSourceHeatPump	4-Ton	1	EA	0 - No Improvement Required	\$ 30,230
Barrett Elementary School	B2	Administration	Work Room	HVAC	WaterSourceHeatPump	2-Ton	1	EA	0 - No Improvement Required	\$ 15,110
Barrett Elementary School	B2	Administration	Resource	HVAC	WaterSourceHeatPump	1.5-Ton	1	EA	0 - No Improvement Required	\$ 11,330
Barrett Elementary School	B2	Administration	Resource	HVAC	WaterSourceHeatPump	2.5-Ton	1	EA	0 - No Improvement Required	\$ 18,890
Barrett Elementary School	B2	Administration	Library	HVAC	WaterSourceHeatPump	2.5-Ton	1	EA	0 - No Improvement Required	\$ 18,890
Barrett Elementary School	B2	Administration	Library	HVAC	WaterSourceHeatPump	3-Ton	1	EA	0 - No Improvement Required	\$ 22,670
Barrett Elementary School	B2	Administration	Lib. Office	HVAC	WaterSourceHeatPump	2-Ton	1	EA	0 - No Improvement Required	\$ 15,110

BARRETT ELEMENTARY SCHOOL

DATA

School	Building ID	Building Description	Room ID	Item	Item Type	Item Sub-Type	Qty	UOM	Assessed Condition	Estimated Cost (Rounded)
Barrett Elementary School	B2	Administration	ESL/Speech	HVAC	WaterSourceHeatPump	2-Ton	1	EA	0 - No Improvement Required	\$ 15,110
Barrett Elementary School	B1	MPR	CoolingTower 1	HVAC	CoolingTower	12-Ton	1	EA	0 - No Improvement Required	\$ 121,690
Barrett Elementary School	B1	MPR	CoolingTower 2	HVAC	CoolingTower	12-Ton	1	EA	0 - No Improvement Required	\$ 121,690
Barrett Elementary School	B1	MPR	Boiler 1	HVAC	Boiler	Hydronic-150 MBTU	1	EA	0 - No Improvement Required	\$ 28,080
Barrett Elementary School	B1	MPR	Boiler 2	HVAC	Boiler	Hydronic-150 MBTU	1	EA	0 - No Improvement Required	\$ 28,080
Barrett Elementary School	B1	MPR	Main Water	HVAC	WaterPump	5 HP	1	EA	0 - No Improvement Required	\$ 8,430
Barrett Elementary School	B1	MPR	Main Water	HVAC	WaterPump	5 HP	1	EA	0 - No Improvement Required	\$ 8,430
Barrett Elementary School	B1	MPR	Boiler Water	HVAC	CentrifugalPump	3 HP	1	EA	0 - No Improvement Required	\$ 14,040
Barrett Elementary School	B1	MPR	Boiler Water	HVAC	CentrifugalPump	3 HP	1	EA	0 - No Improvement Required	\$ 14,040



**BRITTON MIDDLE SCHOOL
80 W. CENTRAL AVE
MORGAN HILL, CA 95037**

SUMMARY

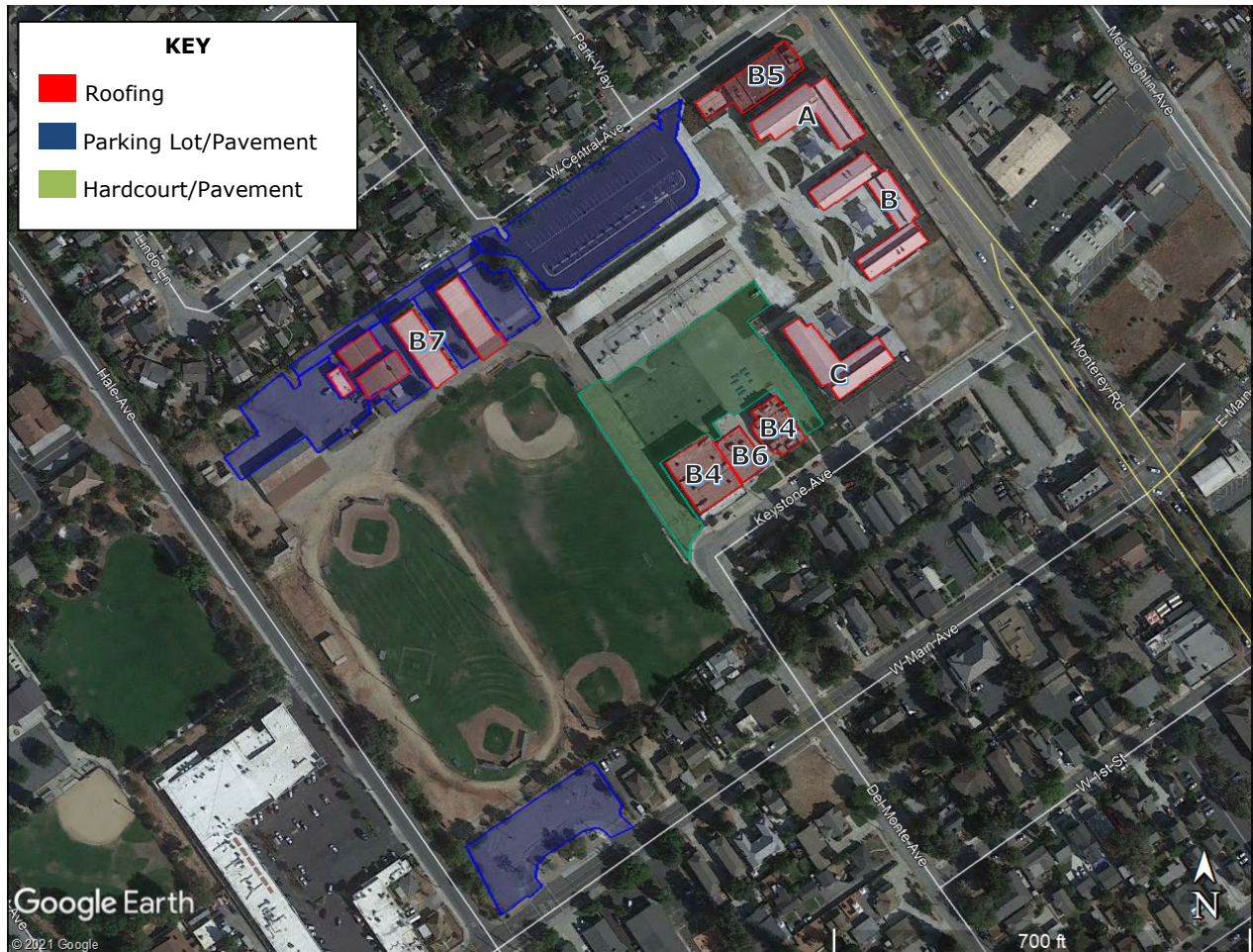
- Built in 1940
- 22 acre site
- 32 Regular classrooms
- 60,000 SF of buildings (New Campus)
- 20,000 SF of Shop Buildings
- 691 Students

The following projects are the higher priority scopes of work from a facility management perspective.

- Replace roofing
- Replace mechanical systems
- Replacement of fire alarm system
- Replace pavement

**BRITTON MIDDLE SCHOOL
80 W. CENTRAL AVE
MORGAN HILL, CA 95037**

SITE PLAN



BRITTON MIDDLE SCHOOL

Needs Assessment Cost Summary

Cost Information Summary By Scope of Work By School*					
School / Scope of Work	No Improvements Necessary	Recommend Improvements But not Necessary	Improvements Needed Nearing End of Life Cycle But Have Time	Improvements Needed Functional But at End of Life Cycle	Total
Britton Middle School					
Fire Alarm System Upgrade	1,051,280	-	-	-	1,051,280
HVAC	2,105,010	-	211,580	482,020	2,798,610
Parking Lot/Pavement	65,820	-	-	987,020	1,052,840
Hardcourt/Pavement	1,128,380	-	-	1,310,570	2,438,950
Roof	1,659,890	-	-	1,599,610	3,259,500
School Total:	\$ 6,010,380	\$ -	\$ 211,580	\$ 4,379,220	\$ 10,601,180

BRITTON MIDDLE SCHOOL

DATA

School	Building ID	Building Description	Room ID	Item	Item Type	Item Sub-Type	Qty	UOM	Assessed Condition	Estimated Cost (Rounded)
Britton Middle School	B4	Locker Room Building		Roof	TPO Single Ply		4,000	SQFT	3 - Critical	\$ 179,730
Britton Middle School	B6	Band, Art		Roof	TPO Single Ply		4,000	SQFT	3 - Critical	\$ 179,730
Britton Middle School	B7	Shop CRs		Roof	TPO Single Ply		10,400	SQFT	3 - Critical	\$ 467,300
Britton Middle School	A	Building A		Roof	Metal		10,000	SQFT	0 - No Improvement Required	\$ 486,770
Britton Middle School	B	Building B		Roof	Metal		14,100	SQFT	0 - No Improvement Required	\$ 686,350
Britton Middle School	C	Building C		Roof	Metal		10,000	SQFT	0 - No Improvement Required	\$ 486,770
Britton Middle School				Parking Lot/Pavement	AutoPavement	Seal/Stripe	48,828	SQFT	0 - No Improvement Required	\$ 65,820
Britton Middle School				Hardcourt/Pavement	Hardcourt	Remove & Replace	54,791	SQFT	0 - No Improvement Required	\$ 1,128,380
Britton Middle School				Hardcourt/Pavement	Hardcourt	Remove & Replace	63,638	SQFT	3 - Critical	\$ 1,310,570
Britton Middle School				Parking Lot/Pavement	AutoPavement	Remove & Replace	5,331	SQFT	3 - Critical	\$ 125,760
Britton Middle School				Parking Lot/Pavement	AutoPavement	Seal/Stripe	7,500	SQFT	3 - Critical	\$ 10,110
Britton Middle School				Parking Lot/Pavement	AutoPavement	Seal/Stripe	8,600	SQFT	3 - Critical	\$ 11,590
Britton Middle School				Parking Lot/Pavement	AutoPavement	Overlay	8,500	SQFT	3 - Critical	\$ 48,540
Britton Middle School				Parking Lot/Pavement	AutoPavement	Overlay	22,755	SQFT	3 - Critical	\$ 129,940
Britton Middle School				Parking Lot/Pavement	AutoPavement	Remove & Replace	28,024	SQFT	3 - Critical	\$ 661,080
Britton Middle School			Room 1 (Auditorium CR)	HVAC	RoofTopPackage	4-Ton	1	EA	3 - Critical	\$ 30,230
Britton Middle School	B5	Auditorium	Auditorium 1	HVAC	RoofTopPackage	4-Ton	1	EA	2 - Necessary But Not Critical	\$ 30,230
Britton Middle School	B5	Auditorium	Auditorium 2	HVAC	RoofTopPackage	4-Ton	1	EA	2 - Necessary But Not Critical	\$ 30,230
Britton Middle School			Grounds 1	HVAC	RoofTopPackage	4-Ton	1	EA	3 - Critical	\$ 30,230
Britton Middle School			Grounds 2	HVAC	RoofTopPackage	4-Ton	1	EA	3 - Critical	\$ 30,230
Britton Middle School			Grounds 3	HVAC	RoofTopPackage	4-Ton	1	EA	3 - Critical	\$ 30,230
Britton Middle School			Grounds 4	HVAC	RoofTopPackage	4-Ton	1	EA	3 - Critical	\$ 30,230
Britton Middle School			Grounds 5	HVAC	RoofTopPackage	4-Ton	1	EA	3 - Critical	\$ 30,230
Britton Middle School			Grounds 6	HVAC	RoofTopPackage	4-Ton	1	EA	3 - Critical	\$ 30,230
Britton Middle School	B7	Shop CRs	SHOP	HVAC	HeatOnly	350,000 BTU	1	EA	3 - Critical	\$ 29,960
Britton Middle School	B2	Library, Classrooms 18-23 (To Be Refurbished with Future Project)	Library	HVAC	RoofTopPackage	4-Ton	1	EA	3 - Critical	\$ 30,230
Britton Middle School	B6	Band, Art	BAND	HVAC	RoofTopPackage	4-Ton	1	EA	3 - Critical	\$ 30,230
Britton Middle School	B6	Band, Art	ARTS	HVAC	RoofTopPackage	4-Ton	1	EA	3 - Critical	\$ 30,230
Britton Middle School	B4	Gymnasium, Locker Rooms	Girls Locker Room	HVAC	RoofTopPackage	10-Ton	1	EA	2 - Necessary But Not Critical	\$ 75,560
Britton Middle School	B4	Gymnasium, Locker Rooms	Boys Locker Room	HVAC	RoofTopPackage	10-Ton	1	EA	2 - Necessary But Not Critical	\$ 75,560
Britton Middle School	B4	Gymnasium, Locker Rooms	GYM-1	HVAC	HeatOnly	500,000 BTU	1	EA	3 - Critical	\$ 37,440
Britton Middle School	B4	Gymnasium, Locker Rooms	GYM-2	HVAC	HeatOnly	500,000 BTU	1	EA	3 - Critical	\$ 37,440
Britton Middle School	B4	Gymnasium, Locker Rooms	GYM-3	HVAC	HeatOnly	500,000 BTU	1	EA	3 - Critical	\$ 37,440
Britton Middle School	B4	Gymnasium, Locker Rooms	GYM-4	HVAC	HeatOnly	500,000 BTU	1	EA	3 - Critical	\$ 37,440
Britton Middle School	A	Building A	A101	HVAC	AirHandlingUnit	5-Ton	1	EA	0 - No Improvement Required	\$ 31,750
Britton Middle School	A	Building A		HVAC	HeatPump	4-Ton	1	EA	0 - No Improvement Required	\$ 30,230
Britton Middle School	A	Building A	A103	HVAC	AirHandlingUnit	5-Ton	1	EA	0 - No Improvement Required	\$ 31,750
Britton Middle School	A	Building A		HVAC	HeatPump	4-Ton	1	EA	0 - No Improvement Required	\$ 30,230
Britton Middle School	A	Building A	A104	HVAC	AirHandlingUnit	5-Ton	1	EA	0 - No Improvement Required	\$ 31,750
Britton Middle School	A	Building A		HVAC	HeatPump	4-Ton	1	EA	0 - No Improvement Required	\$ 30,230
Britton Middle School	A	Building A	A105	HVAC	AirHandlingUnit	5-Ton	1	EA	0 - No Improvement Required	\$ 31,750
Britton Middle School	A	Building A		HVAC	HeatPump	4-Ton	1	EA	0 - No Improvement Required	\$ 30,230
Britton Middle School	A	Building A	A106	HVAC	AirHandlingUnit	5-Ton	1	EA	0 - No Improvement Required	\$ 31,750
Britton Middle School	A	Building A		HVAC	HeatPump	4-Ton	1	EA	0 - No Improvement Required	\$ 30,230
Britton Middle School	A	Building A	A109	HVAC	AirHandlingUnit	5-Ton	1	EA	0 - No Improvement Required	\$ 31,750
Britton Middle School	A	Building A		HVAC	HeatPump	4-Ton	1	EA	0 - No Improvement Required	\$ 30,230
Britton Middle School	A	Building A	A201	HVAC	AirHandlingUnit	5-Ton	1	EA	0 - No Improvement Required	\$ 31,750
Britton Middle School	A	Building A		HVAC	HeatPump	4-Ton	1	EA	0 - No Improvement Required	\$ 30,230
Britton Middle School	A	Building A	A203	HVAC	AirHandlingUnit	5-Ton	1	EA	0 - No Improvement Required	\$ 31,750
Britton Middle School	A	Building A		HVAC	HeatPump	4-Ton	1	EA	0 - No Improvement Required	\$ 30,230
Britton Middle School	A	Building A	A204	HVAC	AirHandlingUnit	5-Ton	1	EA	0 - No Improvement Required	\$ 31,750
Britton Middle School	A	Building A		HVAC	HeatPump	4-Ton	1	EA	0 - No Improvement Required	\$ 30,230
Britton Middle School	A	Building A	A205	HVAC	AirHandlingUnit	5-Ton	1	EA	0 - No Improvement Required	\$ 31,750
Britton Middle School	A	Building A		HVAC	HeatPump	4-Ton	1	EA	0 - No Improvement Required	\$ 30,230
Britton Middle School	A	Building A	A206	HVAC	AirHandlingUnit	5-Ton	1	EA	0 - No Improvement Required	\$ 31,750

DATA

[illegible]

BRITTON MIDDLE SCHOOL

DATA

School	Building ID	Building Description	Room ID	Item	Item Type	Item Sub-Type	Qty	UOM	Assessed Condition	Estimated Cost (Rounded)
Britton Middle School	B	Building B	B3 ELECTRICAL ROOM	HVAC	MiniSplitHeatPump	3.5-Ton	1	EA	0 - No Improvement Required	\$ 26,450
Britton Middle School				Fire Alarm System Upgrade	Middle School		100,272	SQFT	0 - No Improvement Required	\$ 1,051,280



**CENTRAL HIGH SCHOOL
85 TILTON AVE
MORGAN HILL, CA 95037**

SUMMARY

- Built in 1960
- 18 Regular classrooms
- 22 Total classrooms
- 32688 SF of buildings
- 129 Students

The following projects are the higher priority scopes of work from a facility management perspective.

- Replace roofing
- Replace mechanical systems
- Replacement of fire alarm system
- Replace pavement

**CENTRAL HIGH SCHOOL
85 TILTON AVE
MORGAN HILL, CA 95037**

SITE PLAN



CENTRAL HIGH SCHOOL

Needs Assessment Cost Summary

Cost Information Summary By Scope of Work By School*					
School / Scope of Work	No Improvements Necessary	Recommend Improvements But not Necessary	Improvements Needed Nearing End of Life Cycle But Have Time	Improvements Needed Functional But at End of Life Cycle	Total
Central High School					
Fire Alarm System Upgrade	-	340,510	-	-	340,510
HVAC	466,390	-	-	-	466,390
Parking Lot/Pavement	-	-	-	48,350	48,350
Hardcourt/Pavement	-	-	-	1,252,130	1,252,130
Roof	1,295,910	-	-	-	1,295,910
School Total:	\$ 1,762,300	\$ 340,510	\$ -	\$ 1,300,480	\$ 3,403,290

CENTRAL HIGH SCHOOL

DATA

School	Building ID	Building Description	Room ID	Item	Item Type	Item Sub-Type	Qty	UOM	Assessed Condition	Estimated Cost (Rounded)
Central High School	B2	Administration		Roof	Built-Up		5,367	SQFT	0 - No Improvement Required	\$ 241,160
Central High School	B3	Classrooms 1-16		Roof	Built-Up		19,492	SQFT	0 - No Improvement Required	\$ 875,830
Central High School	B4	Restrooms		Roof	Built-Up		1,662	SQFT	0 - No Improvement Required	\$ 74,680
Central High School	B5	Portables 20-24		Roof	Built-Up		2,320	SQFT	0 - No Improvement Required	\$ 104,240
Central High School				Parking Lot/Pavement	AutoPavement	Seal/Stripe	35,864	SQFT	3 - Critical	\$ 48,350
Central High School				Hardcourt/Pavement	Hardcourt	Remove & Replace	54,000	SQFT	3 - Critical	\$ 1,112,090
Central High School				Hardcourt/Pavement	Hardcourt	Remove & Replace	6,800	SQFT	3 - Critical	\$ 140,040
Central High School				Fire Alarm System Upgrade	Elementary School		32,478	SQFT	1 - Recommend Improvement	\$ 340,510
Central High School	B3	Classrooms 1-16	Room 1	HVAC	SplitSystemFurnace	60,000 BTU	1	EA	0 - No Improvement Required	\$ 8,990
Central High School	B3	Classrooms 1-16	Room 1	HVAC	SplitSystemCondenser	2-Ton	1	EA	0 - No Improvement Required	\$ 6,740
Central High School	B3	Classrooms 1-16	Room 2	HVAC	SplitSystemFurnace	60,000 BTU	1	EA	0 - No Improvement Required	\$ 8,990
Central High School	B3	Classrooms 1-16	Room 2	HVAC	SplitSystemCondenser	2-Ton	1	EA	0 - No Improvement Required	\$ 6,740
Central High School	B3	Classrooms 1-16	Room 3	HVAC	SplitSystemFurnace	60,000 BTU	1	EA	0 - No Improvement Required	\$ 8,990
Central High School	B3	Classrooms 1-16	Room 3	HVAC	SplitSystemFurnace	24,000 BTU	1	EA	0 - No Improvement Required	\$ 5,620
Central High School	B3	Classrooms 1-16	Room 4	HVAC	SplitSystemFurnace	60,000 BTU	1	EA	0 - No Improvement Required	\$ 8,990
Central High School	B3	Classrooms 1-16	Room 4	HVAC	SplitSystemCondenser	2-Ton	1	EA	0 - No Improvement Required	\$ 6,740
Central High School	B3	Classrooms 1-16	Room 5	HVAC	SplitSystemFurnace	60,000 BTU	1	EA	0 - No Improvement Required	\$ 8,990
Central High School	B3	Classrooms 1-16	Room 5	HVAC	SplitSystemCondenser	2-Ton	1	EA	0 - No Improvement Required	\$ 6,740
Central High School	B3	Classrooms 1-16	Room 6	HVAC	SplitSystemFurnace	60,000 BTU	1	EA	0 - No Improvement Required	\$ 8,990
Central High School	B3	Classrooms 1-16	Room 6	HVAC	SplitSystemCondenser	2-Ton	1	EA	0 - No Improvement Required	\$ 6,740
Central High School	B3	Classrooms 1-16	Room 7	HVAC	SplitSystemFurnace	60,000 BTU	1	EA	0 - No Improvement Required	\$ 8,990
Central High School	B3	Classrooms 1-16	Room 7	HVAC	SplitSystemCondenser	2-Ton	1	EA	0 - No Improvement Required	\$ 6,740
Central High School	B3	Classrooms 1-16	Room 8	HVAC	SplitSystemFurnace	60,000 BTU	1	EA	0 - No Improvement Required	\$ 8,990
Central High School	B3	Classrooms 1-16	Room 8	HVAC	SplitSystemCondenser	2-Ton	1	EA	0 - No Improvement Required	\$ 6,740
Central High School	B3	Classrooms 1-16	Room 9	HVAC	SplitSystemFurnace	60,000 BTU	1	EA	0 - No Improvement Required	\$ 8,990
Central High School	B3	Classrooms 1-16	Room 9	HVAC	SplitSystemCondenser	2-Ton	1	EA	0 - No Improvement Required	\$ 6,740
Central High School	B3	Classrooms 1-16	Room 10	HVAC	SplitSystemFurnace	60,000 BTU	1	EA	0 - No Improvement Required	\$ 8,990
Central High School	B3	Classrooms 1-16	Room 10	HVAC	SplitSystemCondenser	2-Ton	1	EA	0 - No Improvement Required	\$ 6,740
Central High School	B3	Classrooms 1-16	Room 11	HVAC	SplitSystemFurnace	60,000 BTU	1	EA	0 - No Improvement Required	\$ 8,990
Central High School	B3	Classrooms 1-16	Room 11	HVAC	SplitSystemCondenser	2-Ton	1	EA	0 - No Improvement Required	\$ 6,740
Central High School	B3	Classrooms 1-16	Room 12	HVAC	SplitSystemFurnace	60,000 BTU	1	EA	0 - No Improvement Required	\$ 8,990
Central High School	B3	Classrooms 1-16	Room 12	HVAC	SplitSystemCondenser	2-Ton	1	EA	0 - No Improvement Required	\$ 6,740
Central High School	B3	Classrooms 1-16	Room 13	HVAC	SplitSystemFurnace	60,000 BTU	1	EA	0 - No Improvement Required	\$ 8,990
Central High School	B3	Classrooms 1-16	Room 13	HVAC	SplitSystemCondenser	2-Ton	1	EA	0 - No Improvement Required	\$ 6,740
Central High School	B3	Classrooms 1-16	Room 14	HVAC	SplitSystemFurnace	60,000 BTU	1	EA	0 - No Improvement Required	\$ 8,990
Central High School	B3	Classrooms 1-16	Room 14	HVAC	SplitSystemCondenser	2-Ton	1	EA	0 - No Improvement Required	\$ 6,740
Central High School	B3	Classrooms 1-16	Room 15	HVAC	SplitSystemFurnace	60,000 BTU	1	EA	0 - No Improvement Required	\$ 8,990
Central High School	B3	Classrooms 1-16	Room 15	HVAC	SplitSystemCondenser	2-Ton	1	EA	0 - No Improvement Required	\$ 6,740
Central High School	B3	Classrooms 1-16	Room 16	HVAC	SplitSystemFurnace	60,000 BTU	1	EA	0 - No Improvement Required	\$ 8,990
Central High School	B3	Classrooms 1-16	Room 16	HVAC	SplitSystemCondenser	2-Ton	1	EA	0 - No Improvement Required	\$ 6,740
Central High School	B3	Classrooms 1-16	Room 17	HVAC	SplitSystemFurnace	60,000 BTU	1	EA	0 - No Improvement Required	\$ 8,990
Central High School	B3	Classrooms 1-16	Room 17	HVAC	SplitSystemCondenser	2-Ton	1	EA	0 - No Improvement Required	\$ 6,740
Central High School	B2	Administration	STAFF	HVAC	RoofTopPackage	4-Ton	1	EA	0 - No Improvement Required	\$ 30,230
Central High School	B2	Administration	ADMIN	HVAC	RoofTopPackage	4-Ton	1	EA	0 - No Improvement Required	\$ 30,230
Central High School	B1	MPR	Cafeteria 1	HVAC	RoofTopPackage	4-Ton	1	EA	0 - No Improvement Required	\$ 30,230
Central High School	B1	MPR	Cafeteria 2	HVAC	RoofTopPackage	4-Ton	1	EA	0 - No Improvement Required	\$ 30,230
Central High School	B2	Administration	Conference 1	HVAC	RoofTopPackage	4-Ton	1	EA	0 - No Improvement Required	\$ 30,230
Central High School	B2	Administration	Conference 2	HVAC	RoofTopPackage	4-Ton	1	EA	0 - No Improvement Required	\$ 30,230
Central High School	B1	MPR	Kitchen	HVAC	GasFiredHeater	125,000 BTU	1	EA	0 - No Improvement Required	\$ 18,720



**CHARTER SCHOOL OF MORGAN HILL
9530 MONTEREY ROAD
MORGAN HILL, CA 95037**

SUMMARY

- Built in 1960
- 10 Regular classrooms
- 24 Total classrooms
- 28,855 SF of buildings
- 520 Students

The following projects are the higher priority scopes of work from a facility management perspective.

- Replace roofing
- Replace mechanical systems
- Replacement of fire alarm system
- Replace pavement

**CHARTER SCHOOL OF MORGAN HILL
9530 MONTEREY ROAD
MORGAN HILL, CA 95037**

SITE PLAN



CHARTER SCHOOL OF MORGAN HILL

Needs Assessment Cost Summary

Cost Information Summary By Scope of Work By School*					
School / Scope of Work	No Improvements Necessary	Recommend Improvements But not Necessary	Improvements Needed Nearing End of Life Cycle But Have Time	Improvements Needed Functional But at End of Life Cycle	Total
Charter School of Morgan Hill					
Fire Alarm System Upgrade	-	-	-	302,530	302,530
HVAC	470,440	30,230	-	-	500,670
Parking Lot/Pavement	114,580	-	-	-	114,580
Hardcourt/Pavement	164,750	-	-	-	164,750
Roof	619,820	-	-	336,030	955,850
School Total:	\$ 1,369,590	\$ 30,230	\$ -	\$ 638,560	\$ 2,038,380

CHARTER SCHOOL OF MORGAN HILL

DATA

School	Building ID	Building Description	Room ID	Item	Item Type	Item Sub-Type	Qty	UOM	Assessed Condition	Estimated Cost (Rounded)
Charter School of Morgan Hill	B1	Administration		Roof	Asphalt Shingle		3,982	SQFT	0 - No Improvement Required	\$ 89,460
Charter School of Morgan Hill	B2	Classrooms 3-7		Roof	Asphalt Shingle		7,059	SQFT	3 - Critical	\$ 158,590
Charter School of Morgan Hill	B3	Classrooms 8-12		Roof	Asphalt Shingle		7,898	SQFT	3 - Critical	\$ 177,440
Charter School of Morgan Hill	B4	Classrooms 13-25		Roof	Asphalt Shingle		18,668	SQFT	0 - No Improvement Required	\$ 419,400
Charter School of Morgan Hill	B5	Cafeteria		Roof	Asphalt Shingle		4,939	SQFT	0 - No Improvement Required	\$ 110,960
Charter School of Morgan Hill				Parking Lot/Pavement	AutoPavement	Seal/Stripe	16,000	SQFT	0 - No Improvement Required	\$ 21,570
Charter School of Morgan Hill				Parking Lot/Pavement	AutoPavement	Seal/Stripe	49,000	SQFT	0 - No Improvement Required	\$ 66,050
Charter School of Morgan Hill				Parking Lot/Pavement	AutoPavement	Seal/Stripe	20,000	SQFT	0 - No Improvement Required	\$ 26,960
Charter School of Morgan Hill				Hardcourt/Pavement	Hardcourt	Seal/Stripe	23,000	SQFT	0 - No Improvement Required	\$ 86,120
Charter School of Morgan Hill				Hardcourt/Pavement	Hardcourt	Seal/Stripe	21,000	SQFT	0 - No Improvement Required	\$ 78,630
Charter School of Morgan Hill				Fire Alarm System Upgrade	Charter School		28,855	SQFT	3 - Critical	\$ 302,530
Charter School of Morgan Hill			Room 103	HVAC	RoofTopPackage	3.5-Ton	1	EA	0 - No Improvement Required	\$ 26,450
Charter School of Morgan Hill			Room 104	HVAC	RoofTopPackage	3.5-Ton	1	EA	0 - No Improvement Required	\$ 26,450
Charter School of Morgan Hill			Room 105	HVAC	RoofTopPackage	3.5-Ton	1	EA	0 - No Improvement Required	\$ 26,450
Charter School of Morgan Hill			Room 106	HVAC	RoofTopPackage	3.5-Ton	1	EA	0 - No Improvement Required	\$ 26,450
Charter School of Morgan Hill			Room 107	HVAC	RoofTopPackage	3.5-Ton	1	EA	0 - No Improvement Required	\$ 26,450
Charter School of Morgan Hill			Room 108	HVAC	RoofTopPackage	3.5-Ton	1	EA	0 - No Improvement Required	\$ 26,450
Charter School of Morgan Hill			Room 109	HVAC	RoofTopPackage	3.5-Ton	1	EA	0 - No Improvement Required	\$ 26,450
Charter School of Morgan Hill			Room 110	HVAC	RoofTopPackage	3.5-Ton	1	EA	0 - No Improvement Required	\$ 26,450
Charter School of Morgan Hill			Room 111	HVAC	RoofTopPackage	4-Ton	1	EA	1 - Recommend Improvement	\$ 30,230
Charter School of Morgan Hill			Room 112	HVAC	RoofTopPackage	3.5-Ton	1	EA	0 - No Improvement Required	\$ 26,450
Charter School of Morgan Hill			Bathrooms	HVAC	RoofTopPackage	3.5-Ton	1	EA	0 - No Improvement Required	\$ 26,450
Charter School of Morgan Hill	B5	Cafeteria	MPR-Kitchen	HVAC	GasFiredHeater	100,000 BTU	1	EA	0 - No Improvement Required	\$ 168,500
Charter School of Morgan Hill			MPR-Gym	HVAC	GasFiredHeater	300,000 BTU	1	EA	0 - No Improvement Required	\$ 37,440



**DISTRICT OFFICE
15600 CONCORD CIR
MORGAN HILL, CA 95037**

SUMMARY

The following projects are the higher priority scopes of work from a facility management perspective.

- Replace roofing
- Replace mechanical systems
- Replacement of fire alarm system
- Replace pavement

**DISTRICT OFFICE
15600 CONCORD CIR
MORGAN HILL, CA 95037**

SITE PLAN



DISTRICT OFFICE

Needs Assessment Cost Summary

Cost Information Summary By Scope of Work By School*					
School / Scope of Work	No Improvements Necessary	Recommend Improvements But not Necessary	Improvements Needed Nearing End of Life Cycle But Have Time	Improvements Needed Functional But at End of Life Cycle	Total
District Office					
Fire Alarm System Upgrade	-	-	-	-	-
HVAC	-	-	484,400	-	484,400
Parking Lot/Pavement	-	-	-	80,360	80,360
Hardcourt/Pavement	-	-	-	-	-
Roof	-	-	-	960,750	960,750
School Total:	\$ -	\$ -	\$ 484,400	\$ 1,041,110	\$ 1,525,510

DISTRICT OFFICE

DATA

School	Building ID	Building Description	Room ID	Item	Item Type	Item Sub-Type	Qty	UOM	Assessed Condition	Estimated Cost (Rounded)
District Office			PRINT SHOP	HVAC	RoofTopPackage	4-Ton	1	EA	2 - Necessary But Not Critical	\$ 30,230
District Office			MAINT-1	HVAC	RoofTopPackage	4-Ton	1	EA	2 - Necessary But Not Critical	\$ 30,230
District Office			MAINT-2	HVAC	RoofTopPackage	4-Ton	1	EA	2 - Necessary But Not Critical	\$ 30,230
District Office			Maint break room	HVAC	RoofTopPackage	4-Ton	1	EA	2 - Necessary But Not Critical	\$ 30,230
District Office			Technology Office	HVAC	RoofTopPackage	4-Ton	1	EA	2 - Necessary But Not Critical	\$ 30,230
District Office			Business Services	HVAC	RoofTopPackage	4-Ton	1	EA	2 - Necessary But Not Critical	\$ 30,230
District Office			MDF	HVAC	MiniSplitHeatPump	2-Ton	1	EA	2 - Necessary But Not Critical	\$ 15,110
District Office			MDF	HVAC	MiniSplitHeatPump	3-Ton	1	EA	2 - Necessary But Not Critical	\$ 22,670
District Office			MDF	HVAC	SplitSystemCondenser	5-Ton	1	EA	2 - Necessary But Not Critical	\$ 14,040
District Office			MDF	HVAC	SplitSystemFurnace	66,000 BTU	1	EA	2 - Necessary But Not Critical	\$ 9,360
District Office			HR	HVAC	RoofTopPackage	4-Ton	1	EA	2 - Necessary But Not Critical	\$ 30,230
District Office			Superintendent	HVAC	RoofTopPackage	4-Ton	1	EA	2 - Necessary But Not Critical	\$ 30,230
District Office			Superintendent 2	HVAC	RoofTopPackage	4-Ton	1	EA	2 - Necessary But Not Critical	\$ 30,230
District Office			Technology	HVAC	RoofTopPackage	4-Ton	1	EA	2 - Necessary But Not Critical	\$ 30,230
District Office			Special Services	HVAC	RoofTopPackage	4-Ton	1	EA	2 - Necessary But Not Critical	\$ 30,230
District Office			Special Services 2	HVAC	RoofTopPackage	4-Ton	1	EA	2 - Necessary But Not Critical	\$ 30,230
District Office			Ed Services	HVAC	RoofTopPackage	4-Ton	1	EA	2 - Necessary But Not Critical	\$ 30,230
District Office			BOARD RM.	HVAC	RoofTopPackage	4-Ton	1	EA	2 - Necessary But Not Critical	\$ 30,230
District Office	B1			Roof	TPO Single Ply		21,382	SQFT	3 - Critical	\$ 960,750
District Office		Parking Lots/Facilities Yard		Parking Lot/Pavement	AutoPavement	Seal/Stripe	59,618	SQFT	3 - Critical	\$ 80,360



**EL TORO ELEMENTARY SCHOOL
455 EAST MAIN STREET
MORGAN HILL, CA 95037**

SUMMARY

- Built in 1992
- 12.7 acre site
- 25 Regular classrooms
- 25 Total classrooms
- 43,300 SF of buildings
- 492 Students

The following projects are the higher priority scopes of work from a facility management perspective.

- Replace roofing
- Replace mechanical systems
- Replacement of fire alarm system
- Replace pavement

**EL TORO ELEMENTARY SCHOOL
17960 MONTEREY STREET
MORGAN HILL, CA 95037**

SITE PLAN



EL TORO ELEMENTARY SCHOOL

Needs Assessment Cost Summary

Cost Information Summary By Scope of Work By School*					
School / Scope of Work	No Improvements Necessary	Recommend Improvements But not Necessary	Improvements Needed Nearing End of Life Cycle But Have Time	Improvements Needed Functional But at End of Life Cycle	Total
El Toro Elementary School					
Fire Alarm System Upgrade	-	-	-	453,970	453,970
HVAC	-	-	991,650	-	991,650
Parking Lot/Pavement	-	-	-	74,280	74,280
Hardcourt/Pavement	-	-	-	271,240	271,240
Roof	1,375,290	-	-	-	1,375,290
School Total:	\$ 1,375,290	\$ -	\$ 991,650	\$ 799,490	\$ 3,166,430

EL TORO ELEMENTARY SCHOOL

DATA

School	Building ID	Building Description	Room ID	Item	Item Type	Item Sub-Type	Qty	UOM	Assessed Condition	Estimated Cost (Rounded)
El Toro Elementary School	B1	MPR		Roof	Asphalt Shingle		11,215	SQFT	0 - No Improvement Required	\$ 251,960
El Toro Elementary School	B2	Administration		Roof	Asphalt Shingle		6,347	SQFT	0 - No Improvement Required	\$ 142,590
El Toro Elementary School	B3	Classrooms 1-13		Roof	Asphalt Shingle		15,068	SQFT	0 - No Improvement Required	\$ 338,530
El Toro Elementary School	B4	Library, Classrooms 22-29		Roof	Asphalt Shingle		9,277	SQFT	0 - No Improvement Required	\$ 208,420
El Toro Elementary School	B5	Classrooms 14-21		Roof	Asphalt Shingle		19,308	SQFT	0 - No Improvement Required	\$ 433,790
El Toro Elementary School				Parking Lot/Pavement	AutoPavement	Seal/Stripe	44,500	SQFT	3 - Critical	\$ 59,990
El Toro Elementary School				Parking Lot/Pavement	AutoPavement	Seal/Stripe	10,600	SQFT	3 - Critical	\$ 14,290
El Toro Elementary School				Hardcourt/Pavement	Hardcourt	Overlay	47,500	SQFT	3 - Critical	\$ 271,240
El Toro Elementary School				Fire Alarm System Upgrade	Elementary School		43,300	SQFT	3 - Critical	\$ 453,970
El Toro Elementary School	B3	Classrooms 1-13	Room 2	HVAC	RoofTopPackage	4-Ton	1	EA	2 - Necessary But Not Critical	\$ 30,230
El Toro Elementary School	B3	Classrooms 1-13	Room 3	HVAC	RoofTopPackage	4-Ton	1	EA	2 - Necessary But Not Critical	\$ 30,230
El Toro Elementary School	B3	Classrooms 1-13	Room 4	HVAC	RoofTopPackage	4-Ton	1	EA	2 - Necessary But Not Critical	\$ 30,230
El Toro Elementary School	B3	Classrooms 1-13	Room 5	HVAC	RoofTopPackage	4-Ton	1	EA	2 - Necessary But Not Critical	\$ 30,230
El Toro Elementary School	B3	Classrooms 1-13	Room 6	HVAC	RoofTopPackage	4-Ton	1	EA	2 - Necessary But Not Critical	\$ 30,230
El Toro Elementary School	B3	Classrooms 1-13	Room 7	HVAC	RoofTopPackage	4-Ton	1	EA	2 - Necessary But Not Critical	\$ 30,230
El Toro Elementary School	B3	Classrooms 1-13	Room 8	HVAC	RoofTopPackage	4-Ton	1	EA	2 - Necessary But Not Critical	\$ 30,230
El Toro Elementary School	B3	Classrooms 1-13	Room 9	HVAC	RoofTopPackage	4-Ton	1	EA	2 - Necessary But Not Critical	\$ 30,230
El Toro Elementary School	B3	Classrooms 1-13	Room 10	HVAC	RoofTopPackage	4-Ton	1	EA	2 - Necessary But Not Critical	\$ 30,230
El Toro Elementary School	B3	Classrooms 1-13	Room 11	HVAC	RoofTopPackage	4-Ton	1	EA	2 - Necessary But Not Critical	\$ 30,230
El Toro Elementary School	B3	Classrooms 1-13	Room 12	HVAC	RoofTopPackage	4-Ton	1	EA	2 - Necessary But Not Critical	\$ 30,230
El Toro Elementary School	B3	Classrooms 1-13	Room 13	HVAC	RoofTopPackage	4-Ton	1	EA	2 - Necessary But Not Critical	\$ 30,230
El Toro Elementary School	B3	Classrooms 1-13	Room 14	HVAC	RoofTopPackage	4-Ton	1	EA	2 - Necessary But Not Critical	\$ 30,230
El Toro Elementary School	B3	Classrooms 1-13	Room 15	HVAC	RoofTopPackage	4-Ton	1	EA	2 - Necessary But Not Critical	\$ 30,230
El Toro Elementary School	B3	Classrooms 1-13	Room 16	HVAC	RoofTopPackage	4-Ton	1	EA	2 - Necessary But Not Critical	\$ 30,230
El Toro Elementary School	B3	Classrooms 1-13	Room 17	HVAC	RoofTopPackage	4-Ton	1	EA	2 - Necessary But Not Critical	\$ 30,230
El Toro Elementary School	B3	Classrooms 1-13	Room 18	HVAC	RoofTopPackage	4-Ton	1	EA	2 - Necessary But Not Critical	\$ 30,230
El Toro Elementary School	B3	Classrooms 1-13	Room 19	HVAC	RoofTopPackage	4-Ton	1	EA	2 - Necessary But Not Critical	\$ 30,230
El Toro Elementary School	B3	Classrooms 1-13	Room 21	HVAC	RoofTopPackage	4-Ton	1	EA	2 - Necessary But Not Critical	\$ 30,230
El Toro Elementary School	B3	Classrooms 1-13	Room 22	HVAC	RoofTopPackage	4-Ton	1	EA	2 - Necessary But Not Critical	\$ 30,230
El Toro Elementary School	B3	Classrooms 1-13	Room 23	HVAC	RoofTopPackage	4-Ton	1	EA	2 - Necessary But Not Critical	\$ 30,230
El Toro Elementary School	B3	Classrooms 1-13	Room 24	HVAC	RoofTopPackage	4-Ton	1	EA	2 - Necessary But Not Critical	\$ 30,230
El Toro Elementary School	B3	Classrooms 1-13	Room 25	HVAC	RoofTopPackage	4-Ton	1	EA	2 - Necessary But Not Critical	\$ 30,230
El Toro Elementary School	B3	Classrooms 1-13	Room 26	HVAC	RoofTopPackage	4-Ton	1	EA	2 - Necessary But Not Critical	\$ 30,230
El Toro Elementary School	B3	Classrooms 1-13	Room 27	HVAC	RoofTopPackage	4-Ton	1	EA	2 - Necessary But Not Critical	\$ 30,230
El Toro Elementary School	B3	Classrooms 1-13	Room 28	HVAC	RoofTopPackage	4-Ton	1	EA	2 - Necessary But Not Critical	\$ 30,230
El Toro Elementary School	B5	Classrooms 14-21	Room 29	HVAC	RoofTopPackage	4-Ton	1	EA	2 - Necessary But Not Critical	\$ 30,230
El Toro Elementary School	B5	Classrooms 14-21	Multi	HVAC	RoofTopPackage	4-Ton	1	EA	2 - Necessary But Not Critical	\$ 30,230
El Toro Elementary School	B5	Classrooms 14-21	Multi	HVAC	RoofTopPackage	4-Ton	1	EA	2 - Necessary But Not Critical	\$ 30,230
El Toro Elementary School	B5	Classrooms 14-21	Admin	HVAC	FanCoilUnit	5-Ton	1	EA	2 - Necessary But Not Critical	\$ 37,780
El Toro Elementary School	B5	Classrooms 14-21	Admin	HVAC	SplitSystemCondenser	3-Ton	1	EA	2 - Necessary But Not Critical	\$ 9,360
El Toro Elementary School	B5	Classrooms 14-21	Staff	HVAC	FanCoilUnit	3.5-Ton	1	EA	2 - Necessary But Not Critical	\$ 26,450
El Toro Elementary School	B5	Classrooms 14-21	Staff	HVAC	SplitSystemCondenser	3-Ton	1	EA	2 - Necessary But Not Critical	\$ 9,360
El Toro Elementary School	B5	Classrooms 14-21	Principal	HVAC	FanCoilUnit	3-Ton	1	EA	2 - Necessary But Not Critical	\$ 22,670
El Toro Elementary School	B2	Administration	Principal	HVAC	SplitSystemCondenser	3-Ton	1	EA	2 - Necessary But Not Critical	\$ 9,360



**JACKSON ELEMENTARY SCHOOL
2700 FOUNTAIN OAKS DRIVE
MORGAN HILL, CA 95037**

SUMMARY

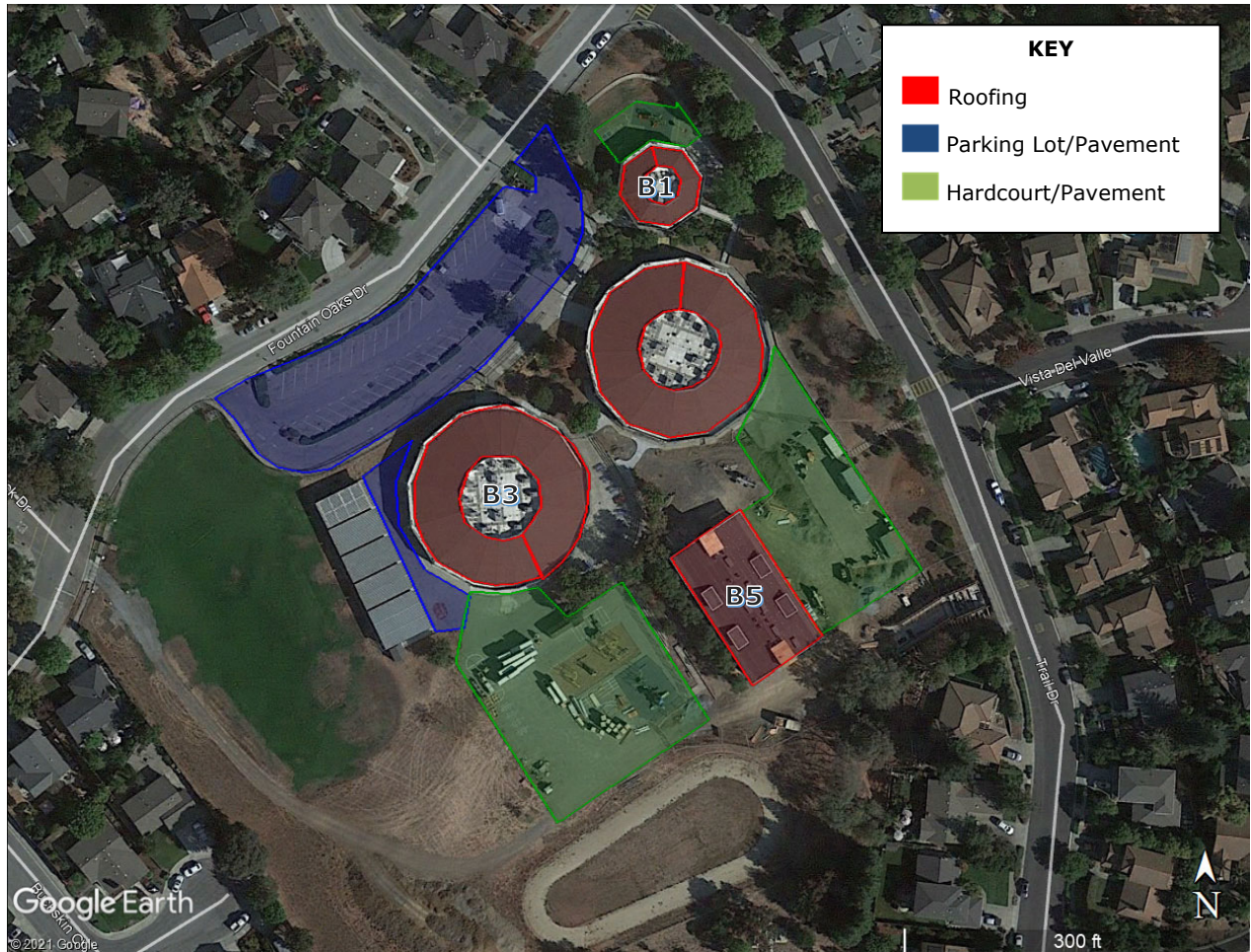
- Built in 1977
- 9 acre site
- 25 Regular classrooms
- 28 Total classrooms
- 47,000 SF of buildings
- 626 Students

The following projects are the higher priority scopes of work from a facility management perspective.

- Replace roofing
- Replace mechanical systems
- Replacement of fire alarm system
- Replace pavement

**JACKSON ELEMENTARY SCHOOL
2700 FOUNTAIN OAKS DRIVE
MORGAN HILL, CA 95037**

SITE PLAN



JACKSON ELEMENTARY SCHOOL

Needs Assessment Cost Summary

Cost Information Summary By Scope of Work By School*					
School / Scope of Work	No Improvements Necessary	Recommend Improvements But not Necessary	Improvements Needed Nearing End of Life Cycle But Have Time	Improvements Needed Functional But at End of Life Cycle	Total
Jackson Elementary School					
Fire Alarm System Upgrade	409,560	-	-	-	409,560
HVAC	982,430	-	-	-	982,430
Parking Lot/Pavement	-	-	-	795,990	795,990
Hardcourt/Pavement	69,270	-	-	10,110	79,380
Roof	1,649,360	-	-	-	1,649,360
School Total:	\$ 3,110,620	\$ -	\$ -	\$ 806,100	\$ 3,916,720

JACKSON ELEMENTARY SCHOOL

DATA

School	Building ID	Building Description	Room ID	Item	Item Type	Item Sub-Type	Qty	UOM	Assessed Condition	Estimated Cost (Rounded)
Jackson Elementary School	B1	Kindergarten		Roof	Asphalt Shingle		4,961	SQFT	0 - No Improvement Required	\$ 111,450
Jackson Elementary School	B2	Office, Classrooms 11-19		Roof	Asphalt Shingle		23,935	SQFT	0 - No Improvement Required	\$ 537,740
Jackson Elementary School	B3	Classrooms 1-10		Roof	Asphalt Shingle		23,935	SQFT	0 - No Improvement Required	\$ 537,740
Jackson Elementary School	B5	Classrooms 26-31 (New)		Roof	Metal		9,500	SQFT	0 - No Improvement Required	\$ 462,430
Jackson Elementary School				Parking Lot/Pavement	AutoPavement	Remove & Replace	32,000	SQFT	3 - Critical	\$ 754,870
Jackson Elementary School				Parking Lot/Pavement	AutoPavement	Seal/Stripe	27,000	SQFT	3 - Critical	\$ 36,400
Jackson Elementary School				Parking Lot/Pavement	AutoPavement	Seal/Stripe	3,500	SQFT	3 - Critical	\$ 4,720
Jackson Elementary School				Hardcourt/Pavement	Hardcourt	Seal/Stripe	2,700	SQFT	3 - Critical	\$ 10,110
Jackson Elementary School				Hardcourt/Pavement	Hardcourt	Seal/Stripe	18,500	SQFT	0 - No Improvement Required	\$ 69,270
Jackson Elementary School				Fire Alarm System Upgrade	Elementary School		39,064	SQFT	0 - No Improvement Required	\$ 409,560
Jackson Elementary School	B3	Classrooms 1-10	Room 1	HVAC	RoofTopPackage	4-Ton	1	EA	0 - No Improvement Required	\$ 30,230
Jackson Elementary School	B3	Classrooms 1-10	Room 2	HVAC	RoofTopPackage	4-Ton	1	EA	0 - No Improvement Required	\$ 30,230
Jackson Elementary School	B3	Classrooms 1-10	Room 3	HVAC	RoofTopPackage	4-Ton	1	EA	0 - No Improvement Required	\$ 30,230
Jackson Elementary School	B3	Classrooms 1-10	Room 4	HVAC	RoofTopPackage	4-Ton	1	EA	0 - No Improvement Required	\$ 30,230
Jackson Elementary School	B3	Classrooms 1-10	Room 5	HVAC	RoofTopPackage	4-Ton	1	EA	0 - No Improvement Required	\$ 30,230
Jackson Elementary School	B3	Classrooms 1-10	Room 6	HVAC	RoofTopPackage	4-Ton	1	EA	0 - No Improvement Required	\$ 30,230
Jackson Elementary School	B3	Classrooms 1-10	Room 7	HVAC	RoofTopPackage	4-Ton	1	EA	0 - No Improvement Required	\$ 30,230
Jackson Elementary School	B3	Classrooms 1-10	Room 8	HVAC	RoofTopPackage	4-Ton	1	EA	0 - No Improvement Required	\$ 30,230
Jackson Elementary School	B3	Classrooms 1-10	Room 9	HVAC	RoofTopPackage	4-Ton	1	EA	0 - No Improvement Required	\$ 30,230
Jackson Elementary School	B3	Classrooms 1-10	Room 10	HVAC	RoofTopPackage	4-Ton	1	EA	0 - No Improvement Required	\$ 30,230
Jackson Elementary School	B2	Office, Classrooms 11-19	Room 11	HVAC	RoofTopPackage	4-Ton	1	EA	0 - No Improvement Required	\$ 30,230
Jackson Elementary School	B2	Office, Classrooms 11-19	Room 12	HVAC	RoofTopPackage	4-Ton	1	EA	0 - No Improvement Required	\$ 30,230
Jackson Elementary School	B2	Office, Classrooms 11-19	Room 13	HVAC	RoofTopPackage	4-Ton	1	EA	0 - No Improvement Required	\$ 30,230
Jackson Elementary School	B2	Office, Classrooms 11-19	Room 14	HVAC	RoofTopPackage	4-Ton	1	EA	0 - No Improvement Required	\$ 30,230
Jackson Elementary School	B2	Office, Classrooms 11-19	Room 15	HVAC	RoofTopPackage	4-Ton	1	EA	0 - No Improvement Required	\$ 30,230
Jackson Elementary School	B2	Office, Classrooms 11-19	Room 16	HVAC	RoofTopPackage	4-Ton	1	EA	0 - No Improvement Required	\$ 30,230
Jackson Elementary School	B2	Office, Classrooms 11-19	Room 17	HVAC	RoofTopPackage	4-Ton	1	EA	0 - No Improvement Required	\$ 30,230
Jackson Elementary School	B2	Office, Classrooms 11-19	Room 18	HVAC	RoofTopPackage	4-Ton	1	EA	0 - No Improvement Required	\$ 30,230
Jackson Elementary School	B2	Office, Classrooms 11-19	Room 19	HVAC	RoofTopPackage	4-Ton	1	EA	0 - No Improvement Required	\$ 30,230
Jackson Elementary School	B1	Kindergarten	Room 20	HVAC	RoofTopPackage	4-Ton	1	EA	0 - No Improvement Required	\$ 30,230
Jackson Elementary School	B1	Kindergarten	Room 21	HVAC	RoofTopPackage	4-Ton	1	EA	0 - No Improvement Required	\$ 30,230
Jackson Elementary School	B1	Kindergarten	Room 22	HVAC	RoofTopPackage	4-Ton	1	EA	0 - No Improvement Required	\$ 30,230
Jackson Elementary School	B2	Office, Classrooms 11-19	Staff Lounge	HVAC	RoofTopPackage	4-Ton	1	EA	0 - No Improvement Required	\$ 30,230
Jackson Elementary School	B2	Office, Classrooms 11-19	Admin Office	HVAC	RoofTopPackage	4-Ton	1	EA	0 - No Improvement Required	\$ 30,230
Jackson Elementary School	B3	Classrooms 1-10	Speech	HVAC	RoofTopPackage	4-Ton	1	EA	0 - No Improvement Required	\$ 30,230
Jackson Elementary School	B3	Classrooms 1-10	Cafeteria/Auditorium	HVAC	RoofTopPackage	7.5-Ton	1	EA	0 - No Improvement Required	\$ 56,670
Jackson Elementary School	B3	Classrooms 1-10	Cafeteria/Auditorium	HVAC	RoofTopPackage	7.5-Ton	1	EA	0 - No Improvement Required	\$ 56,670
Jackson Elementary School	B2	Office, Classrooms 11-19	Library	HVAC	RoofTopPackage	7.5-Ton	1	EA	0 - No Improvement Required	\$ 56,670
Jackson Elementary School	B2	Office, Classrooms 11-19	Library	HVAC	RoofTopPackage	7.5-Ton	1	EA	0 - No Improvement Required	\$ 56,670



**LIVE OAK HIGH SCHOOL
1505 EAST MAIN STREET
MORGAN HILL, CA 95037**

SUMMARY

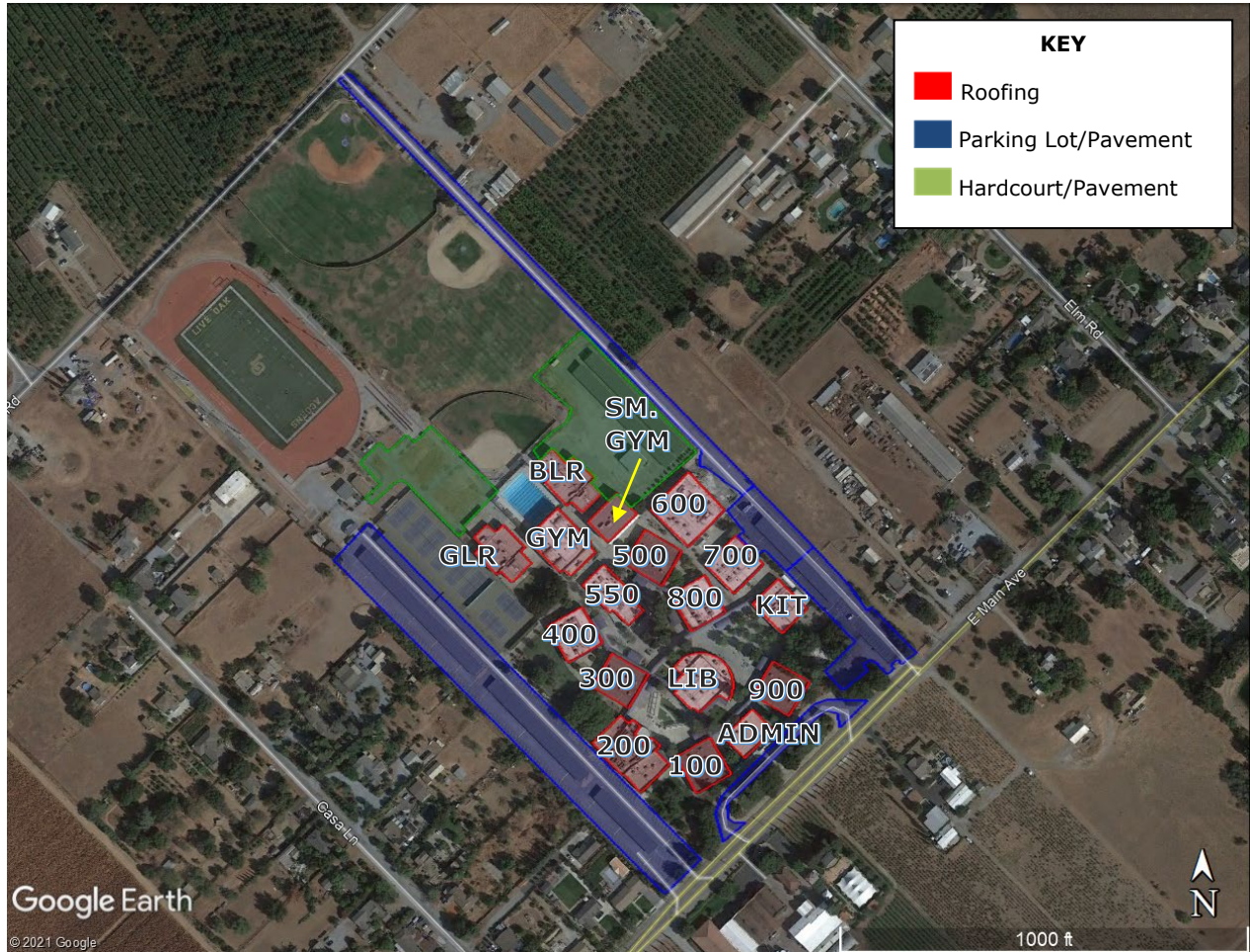
- Built in 1975
- 68 Regular classrooms
- 185,896 SF of buildings
- 1,127 Students

The following projects are the higher priority scopes of work from a facility management perspective.

- Replace roofing
- Replace mechanical systems
- Replacement of fire alarm system
- Replace pavement

**LIVE OAK HIGH SCHOOL
1505 EAST MAIN STREET
MORGAN HILL, CA 95037**

SITE PLAN



LIVE OAK HIGH SCHOOL

Needs Assessment Cost Summary

Cost Information Summary By Scope of Work By School*					
School / Scope of Work	No Improvements Necessary	Recommend Improvements But not Necessary	Improvements Needed Nearing End of Life Cycle But Have Time	Improvements Needed Functional But at End of Life Cycle	Total
Live Oak High School					
Fire Alarm System Upgrade	-	-	-	1,948,990	1,948,990
HVAC	408,190	1,615,570	574,370	4,625,700	7,223,830
Parking Lot/Pavement	-	-	-	2,948,240	2,948,240
Hardcourt/Pavement	-	-	-	2,212,460	2,212,460
Roof	6,682,810	-	-	1,795,830	8,478,640
School Total:	\$ 7,091,000	\$ 1,615,570	\$ 574,370	\$ 13,531,220	\$ 22,812,160

LIVE OAK HIGH SCHOOL

DATA

School	Building ID	Building Description	Room ID	Item	Item Type	Item Sub-Type	Qty	UOM	Assessed Condition	Estimated Cost (Rounded)
Live Oak High School	100	100 Building		Roof	TPO Single Ply		10,071	SQFT	3 - Critical	\$ 452,520
Live Oak High School	200	200 Building/Theater		Roof	TPO Single Ply		17,228	SQFT	0 - No Improvement Required	\$ 774,100
Live Oak High School	300	300 Building		Roof	TPO Single Ply		9,717	SQFT	3 - Critical	\$ 436,610
Live Oak High School	400	400 Building		Roof	TPO Single Ply		9,859	SQFT	0 - No Improvement Required	\$ 442,990
Live Oak High School	500	500 Building		Roof	TPO Single Ply		10,268	SQFT	3 - Critical	\$ 461,370
Live Oak High School	550	550 Building		Roof	TPO Single Ply		9,646	SQFT	0 - No Improvement Required	\$ 433,420
Live Oak High School	600	600 Building		Roof	TPO Single Ply		16,452	SQFT	0 - No Improvement Required	\$ 739,240
Live Oak High School	700	700 Building		Roof	TPO Single Ply		10,078	SQFT	0 - No Improvement Required	\$ 452,830
Live Oak High School	800	800 Building		Roof	TPO Single Ply		10,034	SQFT	0 - No Improvement Required	\$ 450,860
Live Oak High School	900	900 Building		Roof	TPO Single Ply		9,911	SQFT	3 - Critical	\$ 445,330
Live Oak High School	Admin	Administration		Roof	TPO Single Ply		7,120	SQFT	0 - No Improvement Required	\$ 319,920
Live Oak High School	GLR	Girls Locker Room		Roof	TPO Single Ply		11,332	SQFT	0 - No Improvement Required	\$ 509,180
Live Oak High School	BLR	Boys Locker Room		Roof	TPO Single Ply		11,894	SQFT	0 - No Improvement Required	\$ 534,430
Live Oak High School	KIT			Roof	TPO Single Ply		8,809	SQFT	0 - No Improvement Required	\$ 395,810
Live Oak High School	LIB	Library		Roof	TPO Single Ply		14,866	SQFT	0 - No Improvement Required	\$ 667,970
Live Oak High School	GYM	Gymnasium		Roof	TPO Single Ply		14,462	SQFT	0 - No Improvement Required	\$ 649,820
Live Oak High School	SGYM	Smal Gynmasium		Roof	TPO Single Ply		6,949	SQFT	0 - No Improvement Required	\$ 312,240
Live Oak High School				Parking Lot/Pavement	AutoPavement	Overlay	141,000	SQFT	3 - Critical	\$ 805,140
Live Oak High School				Hardcourt/Pavement	Hardcourt	Remove & Replace	23,431	SQFT	3 - Critical	\$ 482,540
Live Oak High School				Hardcourt/Pavement	Hardcourt	Remove & Replace	42,000	SQFT	3 - Critical	\$ 864,960
Live Oak High School				Parking Lot/Pavement	AutoPavement	Remove & Replace	15,000	SQFT	3 - Critical	\$ 353,850
Live Oak High School				Parking Lot/Pavement	AutoPavement	Remove & Replace	20,379	SQFT	3 - Critical	\$ 480,730
Live Oak High School				Parking Lot/Pavement	AutoPavement	Overlay	37,057	SQFT	3 - Critical	\$ 211,600
Live Oak High School				Parking Lot/Pavement	AutoPavement	Remove & Replace	46,500	SQFT	3 - Critical	\$ 1,096,920
Live Oak High School				Hardcourt/Pavement	Hardcourt	Remove & Replace	42,000	SQFT	3 - Critical	\$ 864,960
Live Oak High School				Fire Alarm System Upgrade	High School		185,896	SQFT	3 - Critical	\$ 1,948,990
Live Oak High School	Admin	Administration	ADM-1	HVAC	RoofTopPackage	4-Ton	1	EA	2 - Necessary But Not Critical	\$ 30,230
Live Oak High School	Admin	Administration	ADM-2	HVAC	RoofTopPackage	4-Ton	1	EA	2 - Necessary But Not Critical	\$ 30,230
Live Oak High School	Admin	Administration	ADM-3	HVAC	RoofTopPackage	4-Ton	1	EA	2 - Necessary But Not Critical	\$ 30,230
Live Oak High School	Admin	Administration	ADM-4	HVAC	RoofTopPackage	4-Ton	1	EA	2 - Necessary But Not Critical	\$ 30,230
Live Oak High School	Admin	Administration	ADM-5	HVAC	RoofTopPackage	4-Ton	1	EA	2 - Necessary But Not Critical	\$ 30,230
Live Oak High School	Admin	Administration	ADM-6	HVAC	RoofTopPackage	4-Ton	1	EA	2 - Necessary But Not Critical	\$ 30,230
Live Oak High School	100	100 Building	101	HVAC	RoofTopPackage	4-Ton	1	EA	3 - Critical	\$ 30,230
Live Oak High School	100	100 Building	102	HVAC	RoofTopPackage	4-Ton	1	EA	3 - Critical	\$ 30,230
Live Oak High School	100	100 Building	103	HVAC	RoofTopPackage	4-Ton	1	EA	3 - Critical	\$ 30,230
Live Oak High School	100	100 Building	104	HVAC	RoofTopPackage	4-Ton	1	EA	3 - Critical	\$ 30,230
Live Oak High School	100	100 Building	105	HVAC	RoofTopPackage	4-Ton	1	EA	3 - Critical	\$ 30,230
Live Oak High School	100	100 Building	106	HVAC	RoofTopPackage	4-Ton	1	EA	3 - Critical	\$ 30,230
Live Oak High School	100	100 Building	107	HVAC	RoofTopPackage	4-Ton	1	EA	3 - Critical	\$ 30,230
Live Oak High School	100	100 Building	108	HVAC	RoofTopPackage	4-Ton	1	EA	3 - Critical	\$ 30,230
Live Oak High School	100	100 Building	110	HVAC	RoofTopPackage	4-Ton	1	EA	3 - Critical	\$ 30,230
Live Oak High School	100	100 Building	STAFF	HVAC	RoofTopPackage	4-Ton	1	EA	3 - Critical	\$ 30,230
Live Oak High School	100	100 Building	111	HVAC	RoofTopPackage	4-Ton	1	EA	3 - Critical	\$ 30,230
Live Oak High School	200	200 Building/Theater	202A	HVAC	RoofTopPackage	4-Ton	1	EA	3 - Critical	\$ 30,230
Live Oak High School	200	200 Building/Theater	202B	HVAC	RoofTopPackage	4-Ton	1	EA	3 - Critical	\$ 30,230
Live Oak High School	200	200 Building/Theater	203	HVAC	RoofTopPackage	4-Ton	1	EA	3 - Critical	\$ 30,230
Live Oak High School	200	200 Building/Theater	204A	HVAC	RoofTopPackage	4-Ton	1	EA	3 - Critical	\$ 30,230
Live Oak High School	200	200 Building/Theater	204B	HVAC	RoofTopPackage	4-Ton	1	EA	3 - Critical	\$ 30,230
Live Oak High School	200	200 Building/Theater	204C	HVAC	RoofTopPackage	4-Ton	1	EA	3 - Critical	\$ 30,230
Live Oak High School	200	200 Building/Theater	204D	HVAC	RoofTopPackage	4-Ton	1	EA	3 - Critical	\$ 30,230
Live Oak High School	200	200 Building/Theater	CENTRAL ROOM	HVAC	RoofTopPackage	7.5-Ton	1	EA	1 - Recommend Improvement	\$ 56,670
Live Oak High School	200	200 Building/Theater	AUDT. 1	HVAC	RoofTopPackage	10-Ton	1	EA	1 - Recommend Improvement	\$ 75,560
Live Oak High School	200	200 Building/Theater	AUDT. 2	HVAC	RoofTopPackage	10-Ton	1	EA	1 - Recommend Improvement	\$ 75,560
Live Oak High School	200	200 Building/Theater	STAGE	HVAC	RoofTopPackage	10-Ton	1	EA	1 - Recommend Improvement	\$ 75,560
Live Oak High School	200	200 Building/Theater	LOBBY	HVAC	RoofTopPackage	10-Ton	1	EA	1 - Recommend Improvement	\$ 75,560
Live Oak High School	200	200 Building/Theater	IDF	HVAC	RoofTopPackage	2-Ton	1	EA	0 - No Improvement Required	\$ 15,110
Live Oak High School	300	300 Building	301	HVAC	RoofTopPackage	4-Ton	1	EA	3 - Critical	\$ 30,230
Live Oak High School	300	300 Building	302	HVAC	RoofTopPackage	4-Ton	1	EA	3 - Critical	\$ 30,230
Live Oak High School	300	300 Building	303	HVAC	RoofTopPackage	4-Ton	1	EA	3 - Critical	\$ 30,230

LIVE OAK HIGH SCHOOL

DATA

School	Building ID	Building Description	Room ID	Item	Item Type	Item Sub-Type	Qty	UOM	Assessed Condition	Estimated Cost (Rounded)
Live Oak High School	300	300 Building	304	HVAC	RoofTopPackage	4-Ton	1	EA	3 - Critical	\$ 30,230
Live Oak High School	300	300 Building	305	HVAC	RoofTopPackage	4-Ton	1	EA	3 - Critical	\$ 30,230
Live Oak High School	300	300 Building	306	HVAC	RoofTopPackage	4-Ton	1	EA	3 - Critical	\$ 30,230
Live Oak High School	300	300 Building	307	HVAC	RoofTopPackage	4-Ton	1	EA	3 - Critical	\$ 30,230
Live Oak High School	300	300 Building	308	HVAC	RoofTopPackage	4-Ton	1	EA	3 - Critical	\$ 30,230
Live Oak High School	300	300 Building	309	HVAC	RoofTopPackage	4-Ton	1	EA	3 - Critical	\$ 30,230
Live Oak High School	300	300 Building	310	HVAC	RoofTopPackage	4-Ton	1	EA	3 - Critical	\$ 30,230
Live Oak High School	300	300 Building	311	HVAC	RoofTopPackage	4-Ton	1	EA	3 - Critical	\$ 30,230
Live Oak High School	400	400 Building	401A	HVAC	RoofTopPackage	4-Ton	1	EA	3 - Critical	\$ 30,230
Live Oak High School	400	400 Building	401B	HVAC	RoofTopPackage	4-Ton	1	EA	3 - Critical	\$ 30,230
Live Oak High School	400	400 Building	402A	HVAC	RoofTopPackage	4-Ton	1	EA	3 - Critical	\$ 30,230
Live Oak High School	400	400 Building	402B	HVAC	RoofTopPackage	4-Ton	1	EA	3 - Critical	\$ 30,230
Live Oak High School	400	400 Building	403A	HVAC	RoofTopPackage	4-Ton	1	EA	3 - Critical	\$ 30,230
Live Oak High School	400	400 Building	403B	HVAC	RoofTopPackage	4-Ton	1	EA	3 - Critical	\$ 30,230
Live Oak High School	400	400 Building	404A	HVAC	RoofTopPackage	4-Ton	1	EA	3 - Critical	\$ 30,230
Live Oak High School	400	400 Building	404B	HVAC	RoofTopPackage	4-Ton	1	EA	3 - Critical	\$ 30,230
Live Oak High School	400	400 Building	405A	HVAC	RoofTopPackage	4-Ton	1	EA	3 - Critical	\$ 30,230
Live Oak High School	400	400 Building	405B	HVAC	RoofTopPackage	4-Ton	1	EA	3 - Critical	\$ 30,230
Live Oak High School	400	400 Building	STAFF	HVAC	RoofTopPackage	4-Ton	1	EA	3 - Critical	\$ 30,230
Live Oak High School	500	500 Building	501	HVAC	RoofTopPackage	4-Ton	1	EA	3 - Critical	\$ 30,230
Live Oak High School	500	500 Building	502	HVAC	RoofTopPackage	4-Ton	1	EA	3 - Critical	\$ 30,230
Live Oak High School	500	500 Building	503	HVAC	RoofTopPackage	4-Ton	1	EA	3 - Critical	\$ 30,230
Live Oak High School	500	500 Building	504	HVAC	RoofTopPackage	4-Ton	1	EA	3 - Critical	\$ 30,230
Live Oak High School	500	500 Building	505	HVAC	RoofTopPackage	4-Ton	1	EA	3 - Critical	\$ 30,230
Live Oak High School	500	500 Building	506	HVAC	RoofTopPackage	4-Ton	1	EA	3 - Critical	\$ 30,230
Live Oak High School	500	500 Building	507	HVAC	RoofTopPackage	4-Ton	1	EA	3 - Critical	\$ 30,230
Live Oak High School	500	500 Building	508	HVAC	RoofTopPackage	4-Ton	1	EA	3 - Critical	\$ 30,230
Live Oak High School	500	500 Building	509	HVAC	RoofTopPackage	4-Ton	1	EA	3 - Critical	\$ 30,230
Live Oak High School	600	600 Building	601	HVAC	RoofTopPackage	4-Ton	1	EA	3 - Critical	\$ 30,230
Live Oak High School	600	600 Building	602 N	HVAC	RoofTopPackage	4-Ton	1	EA	3 - Critical	\$ 30,230
Live Oak High School	600	600 Building	602 S	HVAC	RoofTopPackage	4-Ton	1	EA	3 - Critical	\$ 30,230
Live Oak High School	600	600 Building	600 WORK RM	HVAC	RoofTopPackage	4-Ton	1	EA	3 - Critical	\$ 30,230
Live Oak High School	600	600 Building	603	HVAC	RoofTopPackage	4-Ton	1	EA	3 - Critical	\$ 30,230
Live Oak High School	600	600 Building	606	HVAC	RoofTopPackage	4-Ton	1	EA	3 - Critical	\$ 30,230
Live Oak High School	600	600 Building	WOOD SHOP 1	HVAC	AirHandlingUnit	300,000 BTU	1	EA	0 - No Improvement Required	\$ 158,760
Live Oak High School	600	600 Building	WOOD SHOP 1	HVAC	AirHandlingUnit	300,000 BTU	1	EA	0 - No Improvement Required	\$ 158,760
Live Oak High School	700	700 Building	701A	HVAC	RoofTopPackage	4-Ton	1	EA	3 - Critical	\$ 30,230
Live Oak High School	700	700 Building	701B	HVAC	RoofTopPackage	4-Ton	1	EA	3 - Critical	\$ 30,230
Live Oak High School	700	700 Building	702A	HVAC	RoofTopPackage	4-Ton	1	EA	3 - Critical	\$ 30,230
Live Oak High School	700	700 Building	702B	HVAC	RoofTopPackage	4-Ton	1	EA	3 - Critical	\$ 30,230
Live Oak High School	700	700 Building	703A	HVAC	RoofTopPackage	4-Ton	1	EA	3 - Critical	\$ 30,230
Live Oak High School	700	700 Building	703B	HVAC	RoofTopPackage	4-Ton	1	EA	3 - Critical	\$ 30,230
Live Oak High School	700	700 Building	704A	HVAC	RoofTopPackage	4-Ton	1	EA	3 - Critical	\$ 30,230
Live Oak High School	700	700 Building	704B	HVAC	RoofTopPackage	4-Ton	1	EA	3 - Critical	\$ 30,230
Live Oak High School	700	700 Building	705	HVAC	RoofTopPackage	4-Ton	1	EA	3 - Critical	\$ 30,230
Live Oak High School	700	700 Building	706	HVAC	RoofTopPackage	4-Ton	1	EA	3 - Critical	\$ 30,230
Live Oak High School	700	700 Building	CUST.	HVAC	RoofTopPackage	4-Ton	1	EA	3 - Critical	\$ 30,230
Live Oak High School	800	800 Building	801A	HVAC	RoofTopPackage	4-Ton	1	EA	3 - Critical	\$ 30,230
Live Oak High School	800	800 Building	801B	HVAC	RoofTopPackage	4-Ton	1	EA	3 - Critical	\$ 30,230
Live Oak High School	800	800 Building	802	HVAC	RoofTopPackage	4-Ton	1	EA	3 - Critical	\$ 30,230
Live Oak High School	800	800 Building	803	HVAC	RoofTopPackage	4-Ton	1	EA	3 - Critical	\$ 30,230
Live Oak High School	800	800 Building	804A	HVAC	RoofTopPackage	4-Ton	1	EA	3 - Critical	\$ 30,230
Live Oak High School	800	800 Building	804B	HVAC	RoofTopPackage	4-Ton	1	EA	3 - Critical	\$ 30,230
Live Oak High School	800	800 Building	WK.RM.	HVAC	RoofTopPackage	4-Ton	1	EA	3 - Critical	\$ 30,230
Live Oak High School	800	800 Building	SOSA	HVAC	RoofTopPackage	4-Ton	1	EA	3 - Critical	\$ 30,230
Live Oak High School	800	800 Building	805B	HVAC	RoofTopPackage	4-Ton	1	EA	3 - Critical	\$ 30,230
Live Oak High School	800	800 Building	805C*	HVAC	RoofTopPackage	4-Ton	1	EA	3 - Critical	\$ 30,230
Live Oak High School	800	800 Building	806A	HVAC	RoofTopPackage	4-Ton	1	EA	3 - Critical	\$ 30,230
Live Oak High School	800	800 Building	806B	HVAC	RoofTopPackage	4-Ton	1	EA	3 - Critical	\$ 30,230

LIVE OAK HIGH SCHOOL

DATA

School	Building ID	Building Description	Room ID	Item	Item Type	Item Sub-Type	Qty	UOM	Assessed Condition	Estimated Cost (Rounded)
Live Oak High School	800	800 Building	806C*	HVAC	RoofTopPackage	4-Ton	1	EA	3 - Critical	\$ 30,230
Live Oak High School	800	800 Building	STAFF	HVAC	RoofTopPackage	4-Ton	1	EA	3 - Critical	\$ 30,230
Live Oak High School	900	900 Building	901	HVAC	RoofTopPackage	4-Ton	1	EA	3 - Critical	\$ 30,230
Live Oak High School	900	900 Building	902	HVAC	RoofTopPackage	4-Ton	1	EA	3 - Critical	\$ 30,230
Live Oak High School	900	900 Building	903	HVAC	RoofTopPackage	4-Ton	1	EA	3 - Critical	\$ 30,230
Live Oak High School	900	900 Building	904	HVAC	RoofTopPackage	4-Ton	1	EA	3 - Critical	\$ 30,230
Live Oak High School	900	900 Building	905	HVAC	RoofTopPackage	4-Ton	1	EA	3 - Critical	\$ 30,230
Live Oak High School	900	900 Building	906	HVAC	RoofTopPackage	4-Ton	1	EA	3 - Critical	\$ 30,230
Live Oak High School	900	900 Building	907	HVAC	RoofTopPackage	4-Ton	1	EA	3 - Critical	\$ 30,230
Live Oak High School	900	900 Building	908	HVAC	RoofTopPackage	4-Ton	1	EA	3 - Critical	\$ 30,230
Live Oak High School	900	900 Building	909*	HVAC	RoofTopPackage	4-Ton	1	EA	3 - Critical	\$ 30,230
Live Oak High School	900	900 Building	911*	HVAC	RoofTopPackage	4-Ton	1	EA	3 - Critical	\$ 30,230
Live Oak High School	900	900 Building	STAFF	HVAC	RoofTopPackage	4-Ton	1	EA	3 - Critical	\$ 30,230
Live Oak High School	550	550 Building	550	HVAC	RoofTopPackage	4-Ton	1	EA	3 - Critical	\$ 30,230
Live Oak High School	550	550 Building	551	HVAC	RoofTopPackage	4-Ton	1	EA	3 - Critical	\$ 30,230
Live Oak High School	550	550 Building	LECTURE HALL (552)	HVAC	RoofTopPackage	4-Ton	1	EA	3 - Critical	\$ 30,230
Live Oak High School	550	550 Building	553	HVAC	RoofTopPackage	4-Ton	1	EA	3 - Critical	\$ 30,230
Live Oak High School	550	550 Building	554	HVAC	RoofTopPackage	4-Ton	1	EA	3 - Critical	\$ 30,230
Live Oak High School	550	550 Building	555	HVAC	RoofTopPackage	4-Ton	1	EA	3 - Critical	\$ 30,230
Live Oak High School	550	550 Building	556	HVAC	RoofTopPackage	4-Ton	1	EA	3 - Critical	\$ 30,230
Live Oak High School	LIB	Library	LIB-1	HVAC	RoofTopPackage	4-Ton	1	EA	2 - Necessary But Not Critical	\$ 30,230
Live Oak High School	LIB	Library	LIB-2	HVAC	RoofTopPackage	4-Ton	1	EA	2 - Necessary But Not Critical	\$ 30,230
Live Oak High School	LIB	Library	LIB-3	HVAC	RoofTopPackage	4-Ton	1	EA	2 - Necessary But Not Critical	\$ 30,230
Live Oak High School	LIB	Library	LIB-4	HVAC	RoofTopPackage	4-Ton	1	EA	2 - Necessary But Not Critical	\$ 30,230
Live Oak High School	LIB	Library	LIB-5	HVAC	RoofTopPackage	4-Ton	1	EA	2 - Necessary But Not Critical	\$ 30,230
Live Oak High School	LIB	Library	LIB-6	HVAC	RoofTopPackage	4-Ton	1	EA	2 - Necessary But Not Critical	\$ 30,230
Live Oak High School	LIB	Library	LIB-7	HVAC	RoofTopPackage	4-Ton	1	EA	2 - Necessary But Not Critical	\$ 30,230
Live Oak High School	LIB	Library	LIB-8	HVAC	RoofTopPackage	4-Ton	1	EA	2 - Necessary But Not Critical	\$ 30,230
Live Oak High School	LIB	Library	Roof top unit 1	HVAC	RoofTopPackage	12-Ton	1	EA	1 - Recommend Improvement	\$ 90,670
Live Oak High School	LIB	Library	Roof top unit 2	HVAC	RoofTopPackage	12-Ton	1	EA	1 - Recommend Improvement	\$ 90,670
Live Oak High School	LIB	Library	Roof top unit 3	HVAC	RoofTopPackage	12-Ton	1	EA	1 - Recommend Improvement	\$ 90,670
Live Oak High School	FS	Food Services	FS-1	HVAC	RoofTopPackage	4-Ton	1	EA	2 - Necessary But Not Critical	\$ 30,230
Live Oak High School	FS	Food Services	FS-2	HVAC	RoofTopPackage	4-Ton	1	EA	2 - Necessary But Not Critical	\$ 30,230
Live Oak High School	FS	Food Services	FS-3	HVAC	RoofTopPackage	4-Ton	1	EA	2 - Necessary But Not Critical	\$ 30,230
Live Oak High School	FS	Food Services	Kitchen	HVAC	RoofTopPackage	10-Ton	1	EA	0 - No Improvement Required	\$ 75,560
Live Oak High School	FS	Food Services	FS-OFF	HVAC	RoofTopPackage	4-Ton	1	EA	2 - Necessary But Not Critical	\$ 30,230
Live Oak High School	FS	Food Services	FS-OFF	HVAC	RoofTopPackage	4-Ton	1	EA	2 - Necessary But Not Critical	\$ 30,230
Live Oak High School	GLR	Girls Locker Room	GLR 1	HVAC	AirHandlingUnit	300,000 BTU	1	EA	1 - Recommend Improvement	\$ 158,760
Live Oak High School	GLR	Girls Locker Room	GLR 2	HVAC	AirHandlingUnit	300,000 BTU	1	EA	1 - Recommend Improvement	\$ 158,760
Live Oak High School	GLR	Girls Locker Room	DANCE HALL	HVAC	RoofTopPackage	7.5-Ton	1	EA	1 - Recommend Improvement	\$ 56,670
Live Oak High School	GLR	Girls Locker Room	COACHES OFFICE	HVAC	RoofTopPackage	2-Ton	1	EA	1 - Recommend Improvement	\$ 15,110
Live Oak High School	GLR	Girls Locker Room	WRESTLING ROOM	HVAC	AirHandlingUnit	225,000 BTU	1	EA	1 - Recommend Improvement	\$ 119,070
Live Oak High School	BLR	Boys Locker Room	BLR-1	HVAC	AirHandlingUnit	300,000 BTU	1	EA	1 - Recommend Improvement	\$ 158,760
Live Oak High School	BLR	Boys Locker Room	BLR-2	HVAC	AirHandlingUnit	300,000 BTU	1	EA	1 - Recommend Improvement	\$ 158,760
Live Oak High School	BLR	Boys Locker Room	BLR-3	HVAC	AirHandlingUnit	300,000 BTU	1	EA	1 - Recommend Improvement	\$ 158,760
Live Oak High School	BLR	Boys Locker Room	FOOTBALL COACH	HVAC	MiniSplitHeatPump	2-Ton	1	EA	3 - Critical	\$ 15,110
Live Oak High School	BLR	Boys Locker Room	PE COACH	HVAC	MiniSplitHeatPump	2-Ton	1	EA	3 - Critical	\$ 15,110
Live Oak High School	BLR	Boys Locker Room	IDF	HVAC	MiniSplitHeatPump	2-Ton	1	EA	3 - Critical	\$ 15,110
Live Oak High School	GYM	Gymnasium	GYM-1	HVAC	RoofTopPackage	4-Ton	1	EA	3 - Critical	\$ 30,230
Live Oak High School	GYM	Gymnasium	GYM-2	HVAC	AirHandlingUnit	500,000 BTU	1	EA	3 - Critical	\$ 264,600
Live Oak High School	GYM	Gymnasium	GYM-3	HVAC	AirHandlingUnit	500,000 BTU	1	EA	3 - Critical	\$ 264,600
Live Oak High School	GYM	Gymnasium	GYM-4	HVAC	AirHandlingUnit	500,000 BTU	1	EA	3 - Critical	\$ 264,600
Live Oak High School	GYM	Gymnasium	GYM-5	HVAC	AirHandlingUnit	500,000 BTU	1	EA	3 - Critical	\$ 264,600
Live Oak High School	GYM	Gymnasium	GYM-6	HVAC	AirHandlingUnit	500,000 BTU	1	EA	3 - Critical	\$ 264,600
Live Oak High School	GYM	Gymnasium	GYM-7	HVAC	AirHandlingUnit	500,000 BTU	1	EA	3 - Critical	\$ 264,600



**LOS PASEOS ELEMENTARY SCHOOL
121 AVENIDA GRANDE
SAN JOSE, CA 95139**

SUMMARY

- Built in 1974
- 7.65 acre site
- 26 Regular classrooms
- 29 Total classrooms
- 47,081 SF of buildings
- 521 Students

The following projects are the higher priority scopes of work from a facility management perspective.

- Replace roofing
- Replace mechanical systems
- Replacement of fire alarm system
- Replace pavement

**LOS PASEOS ELEMENATARY SCHOOL
121 AVENIDA GRANDE
SAN JOSE, CA 95139**

SITE PLAN



LOS PASEOS ELEMENTARY SCHOOL

Needs Assessment Cost Summary

Cost Information Summary By Scope of Work By School*					
School / Scope of Work	No Improvements Necessary	Recommend Improvements But not Necessary	Improvements Needed Nearing End of Life Cycle But Have Time	Improvements Needed Functional But at End of Life Cycle	Total
Los Paseos Elementary School					
Fire Alarm System Upgrade	-	-	-	493,610	493,610
HVAC	-	-	846,440	-	846,440
Parking Lot/Pavement	-	-	-	58,480	58,480
Hardcourt/Pavement	-	-	-	199,400	199,400
Roof	1,138,880	-	-	434,610	1,573,490
School Total:	\$ 1,138,880	\$ -	\$ 846,440	\$ 1,186,100	\$ 3,171,420

LOS PASEOS ELEMENTARY SCHOOL

DATA

School	Building ID	Building Description	Room ID	Item	Item Type	Item Sub-Type	Qty	UOM	Assessed Condition	Estimated Cost (Rounded)
Los Paseos Elementary School	B1	Admin, Classrooms 1-2		Roof	Asphalt Shingle		6,519	SQFT	0 - No Improvement Required	\$ 146,460
Los Paseos Elementary School	B1	Admin, Classrooms 1-2		Roof	TPO Single Ply		3,077	SQFT	0 - No Improvement Required	\$ 138,260
Los Paseos Elementary School	B1	Admin, Classrooms 1-2		Roof	Asphalt Shingle		6,519	SQFT	0 - No Improvement Required	\$ 146,460
Los Paseos Elementary School	B2	Classrooms 4-10		Roof	TPO Single Ply		3,077	SQFT	0 - No Improvement Required	\$ 138,260
Los Paseos Elementary School	B3	Classrooms 11-17		Roof	Asphalt Shingle		6,519	SQFT	0 - No Improvement Required	\$ 146,460
Los Paseos Elementary School	B3	Classrooms 11-17		Roof	TPO Single Ply		3,077	SQFT	0 - No Improvement Required	\$ 138,260
Los Paseos Elementary School	B4	Classrooms 18-24		Roof	Asphalt Shingle		6,519	SQFT	0 - No Improvement Required	\$ 146,460
Los Paseos Elementary School	B4	Classrooms 18-24		Roof	TPO Single Ply		3,077	SQFT	0 - No Improvement Required	\$ 138,260
Los Paseos Elementary School	B6	Cafeteria, Library		Roof	Asphalt Shingle		12,019	SQFT	3 - Critical	\$ 270,020
Los Paseos Elementary School	B6	Cafeteria, Library		Roof	TPO Single Ply		3,663	SQFT	3 - Critical	\$ 164,590
Los Paseos Elementary School				Parking Lot/Pavement	AutoPavement	Seal/Stripe	26,770	SQFT	3 - Critical	\$ 36,090
Los Paseos Elementary School				Hardcourt/Pavement	Hardcourt	Seal/Stripe	14,353	SQFT	3 - Critical	\$ 53,740
Los Paseos Elementary School				Parking Lot/Pavement	AutoPavement	Seal/Stripe	16,612	SQFT	3 - Critical	\$ 22,390
Los Paseos Elementary School				Hardcourt/Pavement	Hardcourt	Seal/Stripe	38,901	SQFT	3 - Critical	\$ 145,660
Los Paseos Elementary School				Fire Alarm System Upgrade	Elementary School		47,081	SQFT	3 - Critical	\$ 493,610
Los Paseos Elementary School	B1	Admin, Classrooms 1-2	Admin	HVAC	RoofTopPackage	4-Ton	1	EA	2 - Necessary But Not Critical	\$ 30,230
Los Paseos Elementary School			Staff	HVAC	RoofTopPackage	4-Ton	1	EA	2 - Necessary But Not Critical	\$ 30,230
Los Paseos Elementary School			K-1	HVAC	RoofTopPackage	4-Ton	1	EA	2 - Necessary But Not Critical	\$ 30,230
Los Paseos Elementary School			K-2	HVAC	RoofTopPackage	4-Ton	1	EA	2 - Necessary But Not Critical	\$ 30,230
Los Paseos Elementary School	B1	Admin, Classrooms 1-2	1	HVAC	RoofTopPackage	4-Ton	1	EA	2 - Necessary But Not Critical	\$ 30,230
Los Paseos Elementary School	B1	Admin, Classrooms 1-2	2	HVAC	RoofTopPackage	4-Ton	1	EA	2 - Necessary But Not Critical	\$ 30,230
Los Paseos Elementary School			3(STAFF)	HVAC	RoofTopPackage	4-Ton	1	EA	2 - Necessary But Not Critical	\$ 30,230
Los Paseos Elementary School	B2	Classrooms 4-10	4	HVAC	RoofTopPackage	4-Ton	1	EA	2 - Necessary But Not Critical	\$ 30,230
Los Paseos Elementary School	B2	Classrooms 4-10	5	HVAC	RoofTopPackage	4-Ton	1	EA	2 - Necessary But Not Critical	\$ 30,230
Los Paseos Elementary School	B2	Classrooms 4-10	6	HVAC	RoofTopPackage	4-Ton	1	EA	2 - Necessary But Not Critical	\$ 30,230
Los Paseos Elementary School	B2	Classrooms 4-10	7	HVAC	RoofTopPackage	4-Ton	1	EA	2 - Necessary But Not Critical	\$ 30,230
Los Paseos Elementary School	B2	Classrooms 4-10	8	HVAC	RoofTopPackage	4-Ton	1	EA	2 - Necessary But Not Critical	\$ 30,230
Los Paseos Elementary School	B2	Classrooms 4-10	9	HVAC	RoofTopPackage	4-Ton	1	EA	2 - Necessary But Not Critical	\$ 30,230
Los Paseos Elementary School	B2	Classrooms 4-10	10	HVAC	RoofTopPackage	4-Ton	1	EA	2 - Necessary But Not Critical	\$ 30,230
Los Paseos Elementary School	B3	Classrooms 11-17	11	HVAC	RoofTopPackage	4-Ton	1	EA	2 - Necessary But Not Critical	\$ 30,230
Los Paseos Elementary School	B3	Classrooms 11-17	12	HVAC	RoofTopPackage	4-Ton	1	EA	2 - Necessary But Not Critical	\$ 30,230
Los Paseos Elementary School	B3	Classrooms 11-17	13	HVAC	RoofTopPackage	4-Ton	1	EA	2 - Necessary But Not Critical	\$ 30,230
Los Paseos Elementary School	B3	Classrooms 11-17	14	HVAC	RoofTopPackage	4-Ton	1	EA	2 - Necessary But Not Critical	\$ 30,230
Los Paseos Elementary School	B3	Classrooms 11-17	15	HVAC	RoofTopPackage	4-Ton	1	EA	2 - Necessary But Not Critical	\$ 30,230
Los Paseos Elementary School	B3	Classrooms 11-17	16	HVAC	RoofTopPackage	4-Ton	1	EA	2 - Necessary But Not Critical	\$ 30,230
Los Paseos Elementary School	B3	Classrooms 11-17	17(Library)	HVAC	RoofTopPackage	4-Ton	1	EA	2 - Necessary But Not Critical	\$ 30,230
Los Paseos Elementary School	B4	Classrooms 18-24	18	HVAC	RoofTopPackage	4-Ton	1	EA	2 - Necessary But Not Critical	\$ 30,230
Los Paseos Elementary School	B4	Classrooms 18-24	19	HVAC	RoofTopPackage	4-Ton	1	EA	2 - Necessary But Not Critical	\$ 30,230
Los Paseos Elementary School	B4	Classrooms 18-24	20	HVAC	RoofTopPackage	4-Ton	1	EA	2 - Necessary But Not Critical	\$ 30,230
Los Paseos Elementary School	B4	Classrooms 18-24	21 Multi 1	HVAC	RoofTopPackage	4-Ton	1	EA	2 - Necessary But Not Critical	\$ 30,230
Los Paseos Elementary School	B4	Classrooms 18-24	22Multi 4	HVAC	RoofTopPackage	4-Ton	1	EA	2 - Necessary But Not Critical	\$ 30,230
Los Paseos Elementary School	B4	Classrooms 18-24	23 Multi 2	HVAC	RoofTopPackage	4-Ton	1	EA	2 - Necessary But Not Critical	\$ 30,230
Los Paseos Elementary School	B4	Classrooms 18-24	24 Multi 3	HVAC	RoofTopPackage	4-Ton	1	EA	2 - Necessary But Not Critical	\$ 30,230



**MACHDO SCHOOL
15130 SYCAMORE DRIVE
MORGAN HILL, CA 95037**

SUMMARY

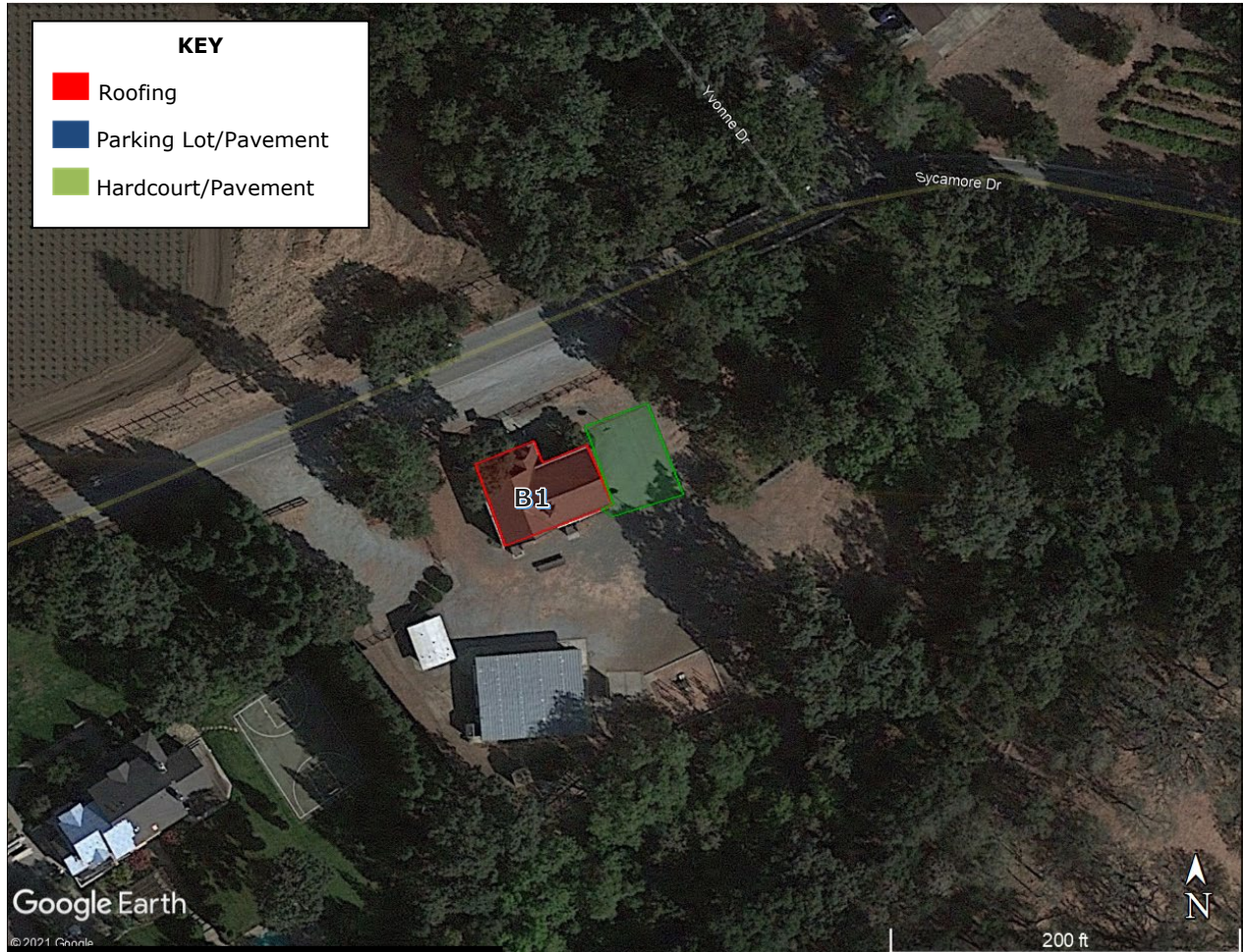
- Built in 1895

The following projects are the higher priority scopes of work from a facility management perspective.

- Replace roofing
- Replace mechanical systems
- Replacement of fire alarm system
- Replace pavement

**MACHADO SCHOOL
15130 SYCAMORE DRIVE
MORGAN HILL, CA 95037**

SITE PLAN



MACHADO LEARNING CENTER

Needs Assessment Cost Summary

Cost Information Summary By Scope of Work By School*					
School / Scope of Work	No Improvements Necessary	Recommend Improvements But not Necessary	Improvements Needed Nearing End of Life Cycle But Have Time	Improvements Needed Functional But at End of Life Cycle	Total
Machado Learning Center					
Fire Alarm System Upgrade	-	-	-	-	-
HVAC	-	-	-	-	-
Parking Lot/Pavement	-	-	-	-	-
Hardcourt/Pavement	-	-	-	8,050	8,050
Roof	-	-	73,820	-	73,820
School Total:	\$ -	\$ -	\$ 73,820	\$ 8,050	\$ 81,870

MACHADO LEARNING CENTER

DATA

School	Building ID	Building Description	Room ID	Item	Item Type	Item Sub-Type	Qty	UOM	Assessed Condition	Estimated Cost (Rounded)
Machado Learning Center	B1			Roof	Asphalt Shingle		3,286	SQFT	2 - Necessary But Not Critical	\$ 73,820
Machado Learning Center				Hardcourt/Pavement	Hardcourt	Seal/Stripe	2,150	SQFT	3 - Critical	\$ 8,050



**MARTIN MURPHY MIDDLE SCHOOL
141 AVENIDA GRANDE
SAN JOSE, CA 95139**

SUMMARY

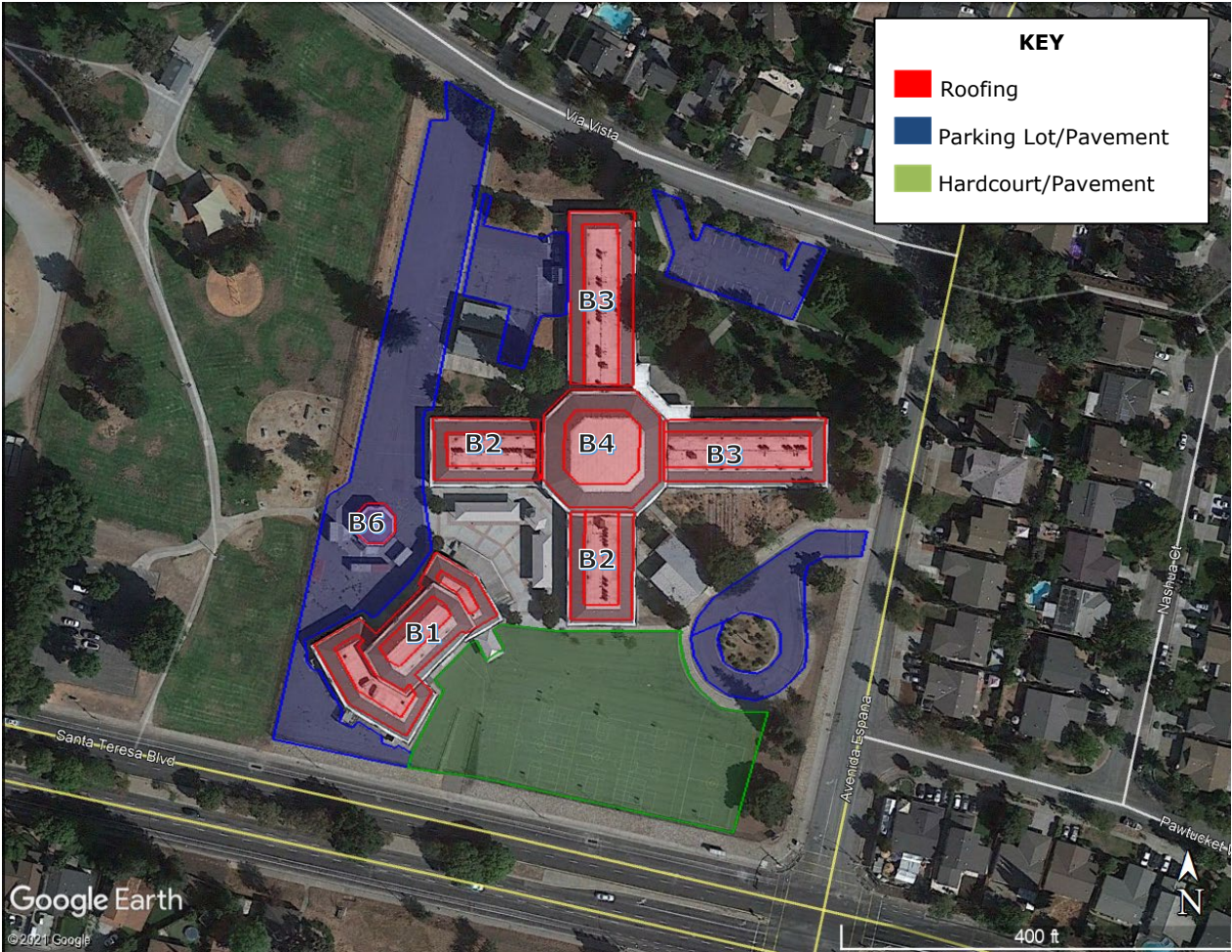
- Built in 1978
- 17.32 acre site
- 34 Regular classrooms
- 69,669 SF of buildings
- 685 Students

The following projects are the higher priority scopes of work from a facility management perspective.

- Replace roofing
- Replace mechanical systems
- Replacement of fire alarm system
- Replace pavement

MARTIN MURPHY MIDDLE SCHOOL
141 AVENIDA GRANDE
SAN JOSE, CA 95139

SITE PLAN



MARTIN MURPHY MIDDLE SCHOOL

Needs Assessment Cost Summary

Cost Information Summary By Scope of Work By School*					
School / Scope of Work	No Improvements Necessary	Recommend Improvements But not Necessary	Improvements Needed Nearing End of Life Cycle But Have Time	Improvements Needed Functional But at End of Life Cycle	Total
Martin Murphy Middle School					
Fire Alarm System Upgrade	-	-	-	730,430	730,430
HVAC	404,380	30,090	-	1,715,220	2,149,690
Parking Lot/Pavement	-	-	-	969,040	969,040
Hardcourt/Pavement	-	-	-	1,040,010	1,040,010
Roof	2,367,050	-	-	-	2,367,050
School Total:	\$ 2,771,430	\$ 30,090	\$ -	\$ 4,454,700	\$ 7,256,220

MARTIN MURPHY MIDDLE SCHOOL

DATA

School	Building ID	Building Description	Room ID	Item	Item Type	Item Sub-Type	Qty	UOM	Assessed Condition	Estimated Cost (Rounded)
Martin Murphy Middle School	B1	Gym, Band, Locker Rooms		Roof	Asphalt Shingle		16,789	SQFT	0 - No Improvement Required	\$ 377,190
Martin Murphy Middle School	B1	Gym, Band, Locker Rooms		Roof	TPO Single Ply		5,154	SQFT	0 - No Improvement Required	\$ 231,580
Martin Murphy Middle School	B2	Classrooms 20-27 & 30-37		Roof	Asphalt Shingle		8,281	SQFT	0 - No Improvement Required	\$ 186,050
Martin Murphy Middle School	B2	Classrooms 20-27 & 30-37		Roof	TPO Single Ply		6,587	SQFT	0 - No Improvement Required	\$ 295,970
Martin Murphy Middle School	B3	Classrooms 8-18 & 40-46		Roof	Asphalt Shingle		12,444	SQFT	0 - No Improvement Required	\$ 279,570
Martin Murphy Middle School	B3	Classrooms 8-18 & 40-46		Roof	TPO Single Ply		11,078	SQFT	0 - No Improvement Required	\$ 497,770
Martin Murphy Middle School	B4	Staff, Library		Roof	Asphalt Shingle		8,727	SQFT	0 - No Improvement Required	\$ 196,070
Martin Murphy Middle School	B4	Staff, Library		Roof	TPO Single Ply		5,359	SQFT	0 - No Improvement Required	\$ 240,800
Martin Murphy Middle School	B6	Central Plant		Roof	Built-Up		1,381	SQFT	0 - No Improvement Required	\$ 62,050
Martin Murphy Middle School				Parking Lot/Pavement	AutoPavement	Overlay	46,500	SQFT	3 - Critical	\$ 265,530
Martin Murphy Middle School				Parking Lot/Pavement	AutoPavement	Remove & Replace	9,639	SQFT	3 - Critical	\$ 227,380
Martin Murphy Middle School				Hardcourt/Pavement	Hardcourt	Remove & Replace	50,500	SQFT	3 - Critical	\$ 1,040,010
Martin Murphy Middle School				Parking Lot/Pavement	AutoPavement	Remove & Replace	17,807	SQFT	3 - Critical	\$ 420,060
Martin Murphy Middle School				Parking Lot/Pavement	AutoPavement	Overlay	9,820	SQFT	3 - Critical	\$ 56,070
Martin Murphy Middle School	B3	Classrooms 8-18 & 40-46	Center 40s	HVAC	SplitSystemFurnace	70,000 BTU	1	EA	0 - No Improvement Required	\$ 9,740
Martin Murphy Middle School	B3	Classrooms 8-18 & 40-46	Center 40s	HVAC	RoofTopPackage	5-Ton	1	EA	3 - Critical	\$ 37,780
Martin Murphy Middle School	B3	Classrooms 8-18 & 40-46	Hallway 40s	HVAC	SplitSystemFurnace	46,000 BTU	1	EA	0 - No Improvement Required	\$ 7,490
Martin Murphy Middle School	B3	Classrooms 8-18 & 40-46	Hallway 40s	HVAC	RoofTopPackage	5-Ton	1	EA	3 - Critical	\$ 37,780
Martin Murphy Middle School	B3	Classrooms 8-18 & 40-46	Room 41	HVAC	SplitSystemFurnace	46,000 BTU	1	EA	0 - No Improvement Required	\$ 7,490
Martin Murphy Middle School	B3	Classrooms 8-18 & 40-46	Room 41	HVAC	RoofTopPackage	5-Ton	1	EA	3 - Critical	\$ 37,780
Martin Murphy Middle School	B3	Classrooms 8-18 & 40-46	Room 40	HVAC	SplitSystemFurnace	46,000 BTU	1	EA	0 - No Improvement Required	\$ 7,490
Martin Murphy Middle School	B3	Classrooms 8-18 & 40-46	Room 40	HVAC	RoofTopPackage	5-Ton	1	EA	3 - Critical	\$ 37,780
Martin Murphy Middle School	B3	Classrooms 8-18 & 40-46	Room 43	HVAC	SplitSystemFurnace	46,000 BTU	1	EA	0 - No Improvement Required	\$ 7,490
Martin Murphy Middle School	B3	Classrooms 8-18 & 40-46	Room 43	HVAC	RoofTopPackage	5-Ton	1	EA	3 - Critical	\$ 37,780
Martin Murphy Middle School	B3	Classrooms 8-18 & 40-46	Room 42	HVAC	SplitSystemFurnace	46,000 BTU	1	EA	0 - No Improvement Required	\$ 7,490
Martin Murphy Middle School	B3	Classrooms 8-18 & 40-46	Room 42	HVAC	RoofTopPackage	5-Ton	1	EA	3 - Critical	\$ 37,780
Martin Murphy Middle School			Storage Room	HVAC	SplitSystemFurnace	46,000 BTU	1	EA	0 - No Improvement Required	\$ 7,490
Martin Murphy Middle School	B3	Classrooms 8-18 & 40-46	Room 45A	HVAC	SplitSystemFurnace	46,000 BTU	1	EA	0 - No Improvement Required	\$ 7,490
Martin Murphy Middle School	B3	Classrooms 8-18 & 40-46	Room 45	HVAC	RoofTopPackage	5-Ton	1	EA	3 - Critical	\$ 37,780
Martin Murphy Middle School	B3	Classrooms 8-18 & 40-46	Room 44A	HVAC	SplitSystemFurnace	46,000 BTU	1	EA	0 - No Improvement Required	\$ 7,490
Martin Murphy Middle School	B3	Classrooms 8-18 & 40-46	Room 44	HVAC	RoofTopPackage	5-Ton	1	EA	3 - Critical	\$ 37,780
Martin Murphy Middle School	B3	Classrooms 8-18 & 40-46	Room 46A	HVAC	SplitSystemFurnace	46,000 BTU	1	EA	0 - No Improvement Required	\$ 7,490
Martin Murphy Middle School	B3	Classrooms 8-18 & 40-46	Room 46A	HVAC	RoofTopPackage	5-Ton	1	EA	3 - Critical	\$ 37,780
Martin Murphy Middle School	B3	Classrooms 8-18 & 40-46	Room 46B	HVAC	SplitSystemFurnace	46,000 BTU	1	EA	0 - No Improvement Required	\$ 7,490
Martin Murphy Middle School	B3	Classrooms 8-18 & 40-46	Room 46B	HVAC	RoofTopPackage	5-Ton	1	EA	3 - Critical	\$ 37,780
Martin Murphy Middle School	B3	Classrooms 8-18 & 40-46	Center 10s	HVAC	SplitSystemFurnace	70,000 BTU	1	EA	0 - No Improvement Required	\$ 9,740
Martin Murphy Middle School	B3	Classrooms 8-18 & 40-46	Center 10s	HVAC	RoofTopPackage	5-Ton	1	EA	3 - Critical	\$ 37,780
Martin Murphy Middle School	B3	Classrooms 8-18 & 40-46	Room 10	HVAC	SplitSystemFurnace	46,000 BTU	1	EA	0 - No Improvement Required	\$ 7,490
Martin Murphy Middle School	B3	Classrooms 8-18 & 40-46	Room 10	HVAC	RoofTopPackage	5-Ton	1	EA	3 - Critical	\$ 37,780
Martin Murphy Middle School	B3	Classrooms 8-18 & 40-46	Room 11	HVAC	SplitSystemFurnace	46,000 BTU	1	EA	0 - No Improvement Required	\$ 7,490
Martin Murphy Middle School	B3	Classrooms 8-18 & 40-46	Room 11	HVAC	RoofTopPackage	5-Ton	1	EA	3 - Critical	\$ 37,780
Martin Murphy Middle School	B3	Classrooms 8-18 & 40-46	Room 12	HVAC	SplitSystemFurnace	46,000 BTU	1	EA	0 - No Improvement Required	\$ 7,490
Martin Murphy Middle School	B3	Classrooms 8-18 & 40-46	Room 12	HVAC	RoofTopPackage	5-Ton	1	EA	3 - Critical	\$ 37,780
Martin Murphy Middle School	B3	Classrooms 8-18 & 40-46	Room 13	HVAC	SplitSystemFurnace	46,000 BTU	1	EA	0 - No Improvement Required	\$ 7,490
Martin Murphy Middle School	B3	Classrooms 8-18 & 40-46	Room 13	HVAC	RoofTopPackage	5-Ton	1	EA	3 - Critical	\$ 37,780
Martin Murphy Middle School	B3	Classrooms 8-18 & 40-46	Room 14	HVAC	SplitSystemFurnace	46,000 BTU	1	EA	0 - No Improvement Required	\$ 7,490
Martin Murphy Middle School	B3	Classrooms 8-18 & 40-46	Room 14	HVAC	RoofTopPackage	5-Ton	1	EA	0 - No Improvement Required	\$ 37,780
Martin Murphy Middle School	B3	Classrooms 8-18 & 40-46	Room 15	HVAC	SplitSystemFurnace	46,000 BTU	1	EA	0 - No Improvement Required	\$ 7,490
Martin Murphy Middle School	B3	Classrooms 8-18 & 40-46	Room 15	HVAC	RoofTopPackage	5-Ton	1	EA	3 - Critical	\$ 37,780
Martin Murphy Middle School	B3	Classrooms 8-18 & 40-46	Room 16	HVAC	SplitSystemFurnace	46,000 BTU	1	EA	0 - No Improvement Required	\$ 7,490
Martin Murphy Middle School	B3	Classrooms 8-18 & 40-46	Room 16	HVAC	RoofTopPackage	5-Ton	1	EA	3 - Critical	\$ 37,780
Martin Murphy Middle School	B3	Classrooms 8-18 & 40-46	Room 17	HVAC	SplitSystemFurnace	46,000 BTU	1	EA	0 - No Improvement Required	\$ 7,490
Martin Murphy Middle School	B3	Classrooms 8-18 & 40-46	Room 17	HVAC	RoofTopPackage	5-Ton	1	EA	3 - Critical	\$ 37,780
Martin Murphy Middle School	B3	Classrooms 8-18 & 40-46	Room 18	HVAC	SplitSystemFurnace	46,000 BTU	1	EA	0 - No Improvement Required	\$ 7,490
Martin Murphy Middle School	B3	Classrooms 8-18 & 40-46	Room 18	HVAC	RoofTopPackage	5-Ton	1	EA	3 - Critical	\$ 37,780
Martin Murphy Middle School			Room 19	HVAC	SplitSystemFurnace	46,000 BTU	1	EA	0 - No Improvement Required	\$ 7,490
Martin Murphy Middle School	B3	Classrooms 8-18 & 40-46	Hallway 10s	HVAC	SplitSystemFurnace	46,000 BTU	1	EA	0 - No Improvement Required	\$ 7,490
Martin Murphy Middle School	B3	Classrooms 8-18 & 40-46	Hallway 10s	HVAC	RoofTopPackage	5-Ton	1	EA	3 - Critical	\$ 37,780
Martin Murphy Middle School	B2	Classrooms 20-27 & 30-37	Hallway 20s	HVAC	SplitSystemFurnace	46,000 BTU	1	EA	0 - No Improvement Required	\$ 7,490

MARTIN MURPHY MIDDLE SCHOOL

DATA

School	Building ID	Building Description	Room ID	Item	Item Type	Item Sub-Type	Qty	UOM	Assessed Condition	Estimated Cost (Rounded)
Martin Murphy Middle School	B2	Classrooms 20-27 & 30-37	Hallway 20s	HVAC	RoofTopPackage	5-Ton	1	EA	3 - Critical	\$ 37,780
Martin Murphy Middle School	B2	Classrooms 20-27 & 30-37	Room 26	HVAC	SplitSystemFurnace	46,000 BTU	1	EA	0 - No Improvement Required	\$ 7,490
Martin Murphy Middle School	B2	Classrooms 20-27 & 30-37	Room 26	HVAC	RoofTopPackage	5-Ton	1	EA	3 - Critical	\$ 37,780
Martin Murphy Middle School	B2	Classrooms 20-27 & 30-37	Room 27	HVAC	SplitSystemFurnace	46,000 BTU	1	EA	0 - No Improvement Required	\$ 7,490
Martin Murphy Middle School	B2	Classrooms 20-27 & 30-37	Room 27	HVAC	RoofTopPackage	5-Ton	1	EA	3 - Critical	\$ 37,780
Martin Murphy Middle School	B2	Classrooms 20-27 & 30-37	Room 24	HVAC	SplitSystemFurnace	46,000 BTU	1	EA	0 - No Improvement Required	\$ 7,490
Martin Murphy Middle School	B2	Classrooms 20-27 & 30-37	Room 24	HVAC	RoofTopPackage	5-Ton	1	EA	3 - Critical	\$ 37,780
Martin Murphy Middle School	B2	Classrooms 20-27 & 30-37	Room 25	HVAC	SplitSystemFurnace	46,000 BTU	1	EA	0 - No Improvement Required	\$ 7,490
Martin Murphy Middle School	B2	Classrooms 20-27 & 30-37	Room 25	HVAC	RoofTopPackage	5-Ton	1	EA	3 - Critical	\$ 37,780
Martin Murphy Middle School	B2	Classrooms 20-27 & 30-37	Room 22	HVAC	SplitSystemFurnace	46,000 BTU	1	EA	0 - No Improvement Required	\$ 7,490
Martin Murphy Middle School	B2	Classrooms 20-27 & 30-37	Room 22	HVAC	RoofTopPackage	5-Ton	1	EA	3 - Critical	\$ 37,780
Martin Murphy Middle School	B2	Classrooms 20-27 & 30-37	Room 23	HVAC	SplitSystemFurnace	46,000 BTU	1	EA	0 - No Improvement Required	\$ 7,490
Martin Murphy Middle School	B2	Classrooms 20-27 & 30-37	Room 23	HVAC	RoofTopPackage	5-Ton	1	EA	3 - Critical	\$ 37,780
Martin Murphy Middle School	B2	Classrooms 20-27 & 30-37	Room 20	HVAC	SplitSystemFurnace	46,000 BTU	1	EA	0 - No Improvement Required	\$ 7,490
Martin Murphy Middle School	B2	Classrooms 20-27 & 30-37	Room 20	HVAC	RoofTopPackage	5-Ton	1	EA	3 - Critical	\$ 37,780
Martin Murphy Middle School	B2	Classrooms 20-27 & 30-37	Room 21	HVAC	SplitSystemFurnace	46,000 BTU	1	EA	0 - No Improvement Required	\$ 7,490
Martin Murphy Middle School	B2	Classrooms 20-27 & 30-37	Room 21	HVAC	RoofTopPackage	5-Ton	1	EA	3 - Critical	\$ 37,780
Martin Murphy Middle School	B2	Classrooms 20-27 & 30-37	Center 20s	HVAC	SplitSystemFurnace	46,000 BTU	1	EA	0 - No Improvement Required	\$ 7,490
Martin Murphy Middle School	B2	Classrooms 20-27 & 30-37	Center 20's	HVAC	RoofTopPackage	5-Ton	1	EA	3 - Critical	\$ 37,780
Martin Murphy Middle School	B2	Classrooms 20-27 & 30-37	Hallway 30s	HVAC	SplitSystemFurnace	46,000 BTU	1	EA	0 - No Improvement Required	\$ 7,490
Martin Murphy Middle School	B2	Classrooms 20-27 & 30-37	Hallway 30s	HVAC	RoofTopPackage	5-Ton	1	EA	3 - Critical	\$ 37,780
Martin Murphy Middle School	B2	Classrooms 20-27 & 30-37	Room 36	HVAC	SplitSystemFurnace	46,000 BTU	1	EA	0 - No Improvement Required	\$ 7,490
Martin Murphy Middle School	B2	Classrooms 20-27 & 30-37	Room 36	HVAC	RoofTopPackage	5-Ton	1	EA	3 - Critical	\$ 37,780
Martin Murphy Middle School	B2	Classrooms 20-27 & 30-37	Room 37	HVAC	SplitSystemFurnace	46,000 BTU	1	EA	0 - No Improvement Required	\$ 7,490
Martin Murphy Middle School	B2	Classrooms 20-27 & 30-37	Room 37	HVAC	RoofTopPackage	5-Ton	1	EA	3 - Critical	\$ 37,780
Martin Murphy Middle School	B2	Classrooms 20-27 & 30-37	Room 34	HVAC	SplitSystemFurnace	46,000 BTU	1	EA	0 - No Improvement Required	\$ 7,490
Martin Murphy Middle School	B2	Classrooms 20-27 & 30-37	Room 34	HVAC	RoofTopPackage	5-Ton	1	EA	3 - Critical	\$ 37,780
Martin Murphy Middle School	B2	Classrooms 20-27 & 30-37	Room 35	HVAC	SplitSystemFurnace	46,000 BTU	1	EA	0 - No Improvement Required	\$ 7,490
Martin Murphy Middle School	B2	Classrooms 20-27 & 30-37	Room 35	HVAC	RoofTopPackage	5-Ton	1	EA	3 - Critical	\$ 37,780
Martin Murphy Middle School	B2	Classrooms 20-27 & 30-37	Room 32	HVAC	SplitSystemFurnace	46,000 BTU	1	EA	0 - No Improvement Required	\$ 7,490
Martin Murphy Middle School	B2	Classrooms 20-27 & 30-37	Room 32	HVAC	RoofTopPackage	5-Ton	1	EA	3 - Critical	\$ 37,780
Martin Murphy Middle School	B2	Classrooms 20-27 & 30-37	Room 33	HVAC	SplitSystemFurnace	46,000 BTU	1	EA	0 - No Improvement Required	\$ 7,490
Martin Murphy Middle School	B2	Classrooms 20-27 & 30-37	Room 33	HVAC	RoofTopPackage	5-Ton	1	EA	0 - No Improvement Required	\$ 37,780
Martin Murphy Middle School	B2	Classrooms 20-27 & 30-37	Room 30	HVAC	SplitSystemFurnace	46,000 BTU	1	EA	0 - No Improvement Required	\$ 7,490
Martin Murphy Middle School	B2	Classrooms 20-27 & 30-37	Room 30	HVAC	RoofTopPackage	5-Ton	1	EA	3 - Critical	\$ 37,780
Martin Murphy Middle School	B2	Classrooms 20-27 & 30-37	Room 31	HVAC	SplitSystemFurnace	46,000 BTU	1	EA	0 - No Improvement Required	\$ 7,490
Martin Murphy Middle School	B2	Classrooms 20-27 & 30-37	Room 31	HVAC	RoofTopPackage	5-Ton	1	EA	3 - Critical	\$ 37,780
Martin Murphy Middle School	B2	Classrooms 20-27 & 30-37	Center 30s	HVAC	SplitSystemFurnace	70,000 BTU	1	EA	0 - No Improvement Required	\$ 9,740
Martin Murphy Middle School	B2	Classrooms 20-27 & 30-37	Center 30s	HVAC	RoofTopPackage	5-Ton	1	EA	3 - Critical	\$ 37,780
Martin Murphy Middle School			Admin	HVAC	RoofTopPackage	5-Ton	1	EA	3 - Critical	\$ 37,780
Martin Murphy Middle School			Storage Room	HVAC	RoofTopPackage	5-Ton	1	EA	3 - Critical	\$ 37,780
Martin Murphy Middle School	B4	Staff, Library	Library	HVAC	RoofTopPackage	5-Ton	1	EA	3 - Critical	\$ 37,780
Martin Murphy Middle School	B4	Staff, Library	LibraryStorage Room	HVAC	RoofTopPackage	5-Ton	1	EA	3 - Critical	\$ 37,780
Martin Murphy Middle School	B4	Staff, Library	Library 30s	HVAC	RoofTopPackage	5-Ton	1	EA	3 - Critical	\$ 37,780
Martin Murphy Middle School			Center Office	HVAC	RoofTopPackage	5-Ton	1	EA	3 - Critical	\$ 37,780
Martin Murphy Middle School	B1	Gym, Band, Locker Rooms	Gym	HVAC	RoofTopPackage	2-Ton	1	EA	1 - Recommend Improvement	\$ 15,110
Martin Murphy Middle School	B1	Gym, Band, Locker Rooms	Boys Locker Room	HVAC	HeatOnly	Sterling PV25	1	EA	1 - Recommend Improvement	\$ 7,490
Martin Murphy Middle School	B1	Gym, Band, Locker Rooms	Girls Locker Room	HVAC	HeatOnly	Sterling PV25	1	EA	1 - Recommend Improvement	\$ 7,490
Martin Murphy Middle School	B1	Gym, Band, Locker Rooms	Girls Coach Office	HVAC	MiniSplitHeatPump	1-Ton	1	EA	3 - Critical	\$ 7,560
Martin Murphy Middle School	B1	Gym, Band, Locker Rooms	Boys Coach Office	HVAC	MiniSplitHeatPump	1-Ton	1	EA	3 - Critical	\$ 7,560
Martin Murphy Middle School				Fire Alarm System Upgrade	Middle School		69,669	SQFT	3 - Critical	\$ 730,430



**NORDSTROM ELEMENTARY SCHOOL
1425 E. DUNNE AVE
MORGAN HILL, CA 95037**

SUMMARY

- Built in 1963
- 10.4 acre site
- 22 Regular classrooms
- 31 Total classrooms
- 49,000 SF of buildings
- 639 Students

The following projects are the higher priority scopes of work from a facility management perspective.

- Replace roofing
- Replace mechanical systems
- Replacement of fire alarm system
- Replace pavement

**NORDSTROM ELEMENTARY SCHOOL
1425 E. DUNNE AVE
MORGAN HILL, CA 95037**

SITE PLAN



NORDSTROM ELEMENTARY SCHOOL

Needs Assessment Cost Summary

Cost Information Summary By Scope of Work By School*					
School / Scope of Work	No Improvements Necessary	Recommend Improvements But not Necessary	Improvements Needed Nearing End of Life Cycle But Have Time	Improvements Needed Functional But at End of Life Cycle	Total
Nordstrom Elementary School					
Fire Alarm System Upgrade	-	-	-	490,750	490,750
HVAC	574,340	-	423,220	-	997,560
Parking Lot/Pavement	12,130	-	-	43,260	55,390
Hardcourt/Pavement	-	-	-	272,390	272,390
Roof	1,658,380	-	3,465,400	-	5,123,780
School Total:	\$ 2,244,850	\$ -	\$ 3,888,620	\$ 806,400	\$ 6,939,870

NORDSTROM ELEMENTARY SCHOOL

DATA

School	Building ID	Building Description	Room ID	Item	Item Type	Item Sub-Type	Qty	UOM	Assessed Condition	Estimated Cost (Rounded)
Nordstrom Elementary School	B1	Kindergarten		Roof	Built-Up		4,801	SQFT	0 - No Improvement Required	\$ 215,740
Nordstrom Elementary School	B2	Cafeteria, Classrooms 20-29		Roof	Asphalt Shingle		24,000	SQFT	0 - No Improvement Required	\$ 539,190
Nordstrom Elementary School	B3	Adminstration		Roof	TPO Single Ply		4,341	SQFT	0 - No Improvement Required	\$ 195,050
Nordstrom Elementary School	B4	Support, Classrooms 5-8		Roof	TPO Single Ply		70,099	SQFT	2 - Necessary But Not Critical	\$ 3,149,750
Nordstrom Elementary School	B5	Library, Classrooms 1-4		Roof	TPO Single Ply		7,025	SQFT	2 - Necessary But Not Critical	\$ 315,650
Nordstrom Elementary School	B7	Classrooms 13-16		Roof	Metal		7,277	SQFT	0 - No Improvement Required	\$ 354,200
Nordstrom Elementary School	B8	Classrooms 9-12		Roof	Metal		7,277	SQFT	0 - No Improvement Required	\$ 354,200
Nordstrom Elementary School				Parking Lot/Pavement	AutoPavement	Seal/Stripe	32,090	SQFT	3 - Critical	\$ 43,260
Nordstrom Elementary School				Parking Lot/Pavement	AutoPavement	Seal/Stripe	9,000	SQFT	0 - No Improvement Required	\$ 12,130
Nordstrom Elementary School				Hardcourt/Pavement	Hardcourt	Seal/Stripe	72,745	SQFT	3 - Critical	\$ 272,390
Nordstrom Elementary School				Fire Alarm System Upgrade	Elementary School		46,808	SQFT	3 - Critical	\$ 490,750
Nordstrom Elementary School	B5	Library, Classrooms 1-4	Room 1	HVAC	RoofTopPackage	4-Ton	1	EA	2 - Necessary But Not Critical	\$ 30,230
Nordstrom Elementary School	B5	Library, Classrooms 1-4	Room 2	HVAC	RoofTopPackage	4-Ton	1	EA	2 - Necessary But Not Critical	\$ 30,230
Nordstrom Elementary School	B5	Library, Classrooms 1-4	Room 3	HVAC	RoofTopPackage	4-Ton	1	EA	2 - Necessary But Not Critical	\$ 30,230
Nordstrom Elementary School	B5	Library, Classrooms 1-4	Library	HVAC	RoofTopPackage	4-Ton	1	EA	2 - Necessary But Not Critical	\$ 30,230
Nordstrom Elementary School	B5	Library, Classrooms 1-4	Library	HVAC	RoofTopPackage	4-Ton	1	EA	2 - Necessary But Not Critical	\$ 30,230
Nordstrom Elementary School	B5	Library, Classrooms 1-4	Room 4	HVAC	RoofTopPackage	4-Ton	1	EA	2 - Necessary But Not Critical	\$ 30,230
Nordstrom Elementary School	B4	Support, Classrooms 5-8	Room 5	HVAC	RoofTopPackage	4-Ton	1	EA	2 - Necessary But Not Critical	\$ 30,230
Nordstrom Elementary School	B4	Support, Classrooms 5-8	Room 6	HVAC	RoofTopPackage	4-Ton	1	EA	2 - Necessary But Not Critical	\$ 30,230
Nordstrom Elementary School	B2	Cafeteria, Classrooms 20-29	Bldg 2 Center East	HVAC	RoofTopPackage	4-Ton	1	EA	2 - Necessary But Not Critical	\$ 30,230
Nordstrom Elementary School	B2	Cafeteria, Classrooms 20-29	Bldg 2 Center West	HVAC	RoofTopPackage	4-Ton	1	EA	2 - Necessary But Not Critical	\$ 30,230
Nordstrom Elementary School	B4	Support, Classrooms 5-8	Room 7	HVAC	RoofTopPackage	4-Ton	1	EA	2 - Necessary But Not Critical	\$ 30,230
Nordstrom Elementary School	B4	Support, Classrooms 5-8	Room 8	HVAC	RoofTopPackage	4-Ton	1	EA	2 - Necessary But Not Critical	\$ 30,230
Nordstrom Elementary School	B3	Adminstration	Admin.	HVAC	RoofTopPackage	4-Ton	1	EA	2 - Necessary But Not Critical	\$ 30,230
Nordstrom Elementary School	B3	Adminstration	Lounge	HVAC	RoofTopPackage	4-Ton	1	EA	2 - Necessary But Not Critical	\$ 30,230
Nordstrom Elementary School	B2	Cafeteria, Classrooms 20-29	Center MPR	HVAC	RoofTopPackage	10-Ton	1	EA	0 - No Improvement Required	\$ 75,560
Nordstrom Elementary School	B2	Cafeteria, Classrooms 20-29	Center MPR	HVAC	RoofTopPackage	10-Ton	1	EA	0 - No Improvement Required	\$ 75,560
Nordstrom Elementary School	B2	Cafeteria, Classrooms 20-29	Room 20	HVAC	RoofTopPackage	4-Ton	1	EA	0 - No Improvement Required	\$ 30,230
Nordstrom Elementary School	B2	Cafeteria, Classrooms 20-29	Room 21	HVAC	RoofTopPackage	4-Ton	1	EA	0 - No Improvement Required	\$ 30,230
Nordstrom Elementary School	B2	Cafeteria, Classrooms 20-29	Room 22	HVAC	RoofTopPackage	4-Ton	1	EA	0 - No Improvement Required	\$ 30,230
Nordstrom Elementary School	B2	Cafeteria, Classrooms 20-29	Room 23	HVAC	RoofTopPackage	4-Ton	1	EA	0 - No Improvement Required	\$ 30,230
Nordstrom Elementary School	B2	Cafeteria, Classrooms 20-29	Room 24	HVAC	RoofTopPackage	4-Ton	1	EA	0 - No Improvement Required	\$ 30,230
Nordstrom Elementary School	B2	Cafeteria, Classrooms 20-29	Room 25	HVAC	RoofTopPackage	4-Ton	1	EA	0 - No Improvement Required	\$ 30,230
Nordstrom Elementary School	B2	Cafeteria, Classrooms 20-29	Room 26	HVAC	RoofTopPackage	4-Ton	1	EA	0 - No Improvement Required	\$ 30,230
Nordstrom Elementary School	B2	Cafeteria, Classrooms 20-29	Room 27	HVAC	RoofTopPackage	4-Ton	1	EA	0 - No Improvement Required	\$ 30,230
Nordstrom Elementary School	B2	Cafeteria, Classrooms 20-29	Room 28	HVAC	RoofTopPackage	4-Ton	1	EA	0 - No Improvement Required	\$ 30,230
Nordstrom Elementary School	B2	Cafeteria, Classrooms 20-29	Room 29	HVAC	RoofTopPackage	4-Ton	1	EA	0 - No Improvement Required	\$ 30,230
Nordstrom Elementary School	B2	Cafeteria, Classrooms 20-29	Speech	HVAC	RoofTopPackage	4-Ton	1	EA	0 - No Improvement Required	\$ 30,230
Nordstrom Elementary School	B1	Kindergarten	Room 30 (Kinder)	HVAC	RoofTopPackage	4-Ton	1	EA	0 - No Improvement Required	\$ 30,230
Nordstrom Elementary School	B1	Kindergarten	Room 31 (Kinder)	HVAC	RoofTopPackage	4-Ton	1	EA	0 - No Improvement Required	\$ 30,230
Nordstrom Elementary School	B1	Kindergarten	Room 32 (Kinder)	HVAC	RoofTopPackage	4-Ton	1	EA	0 - No Improvement Required	\$ 30,230



**PA WALSH STREAM ACADEMY
353 W. MAIN AVE
MORGAN HILL, CA 95037**

SUMMARY

- Built in 1952
- 10.06 acre site
- 20 Regular classrooms
- 34 Total classrooms
- 44,832 SF of buildings
- 418 Students

The following projects are the higher priority scopes of work from a facility management perspective.

- Replace roofing
- Replace mechanical systems
- Replacement of fire alarm system
- Replace pavement

**PA WALSH STEAM ACADEMY
353 W. MAIN AVE
MORGAN HILL, CA 95037**

SITE PLAN



PA WALSH ELEMENTARY SCHOOL

Needs Assessment Cost Summary

Cost Information Summary By Scope of Work By School*					
School / Scope of Work	No Improvements Necessary	Recommend Improvements But not Necessary	Improvements Needed Nearing End of Life Cycle But Have Time	Improvements Needed Functional But at End of Life Cycle	Total
PA Walsh Elementary School					
Fire Alarm System Upgrade	-	470,030	-	-	470,030
HVAC	-	-	-	725,520	725,520
Parking Lot/Pavement	-	-	-	50,820	50,820
Hardcourt/Pavement	-	-	-	769,380	769,380
Roof	2,179,270	-	-	-	2,179,270
School Total:	\$ 2,179,270	\$ 470,030	\$ -	\$ 1,545,720	\$ 4,195,020

PA WALSH ELEMENTARY SCHOOL

DATA

School	Building ID	Building Description	Room ID	Item	Item Type	Item Sub-Type	Qty	UOM	Assessed Condition	Estimated Cost (Rounded)
PA Walsh Elementary School	B1	Administration		Roof	Asphalt Shingle		1,290	SQFT	0 - No Improvement Required	\$ 28,990
PA Walsh Elementary School	B2	Classrooms 1-10		Roof	Asphalt Shingle		5,084	SQFT	0 - No Improvement Required	\$ 114,230
PA Walsh Elementary School	B2	Classrooms 1-10		Roof	TPO Single Ply		6,938	SQFT	0 - No Improvement Required	\$ 311,740
PA Walsh Elementary School	B3	MPR		Roof	TPO Single Ply		8,024	SQFT	0 - No Improvement Required	\$ 360,540
PA Walsh Elementary School	B4	Classrooms 11-19		Roof	Asphalt Shingle		4,387	SQFT	0 - No Improvement Required	\$ 98,550
PA Walsh Elementary School	B4	Classrooms 11-19		Roof	TPO Single Ply		8,462	SQFT	0 - No Improvement Required	\$ 380,220
PA Walsh Elementary School	B5	Classroom 121-34		Roof	Built-Up		15,372	SQFT	0 - No Improvement Required	\$ 690,710
PA Walsh Elementary School	B6	Library, Kindergarten		Roof	Built-Up		4,324	SQFT	0 - No Improvement Required	\$ 194,290
PA Walsh Elementary School				Parking Lot/Pavement	AutoPavement	Seal/Stripe	10,500	SQFT	3 - Critical	\$ 14,150
PA Walsh Elementary School				Hardcourt/Pavement	Hardcourt	Remove & Replace	7,000	SQFT	3 - Critical	\$ 144,160
PA Walsh Elementary School				Hardcourt/Pavement	Hardcourt	Remove & Replace	20,477	SQFT	3 - Critical	\$ 421,710
PA Walsh Elementary School				Hardcourt/Pavement	Hardcourt	Seal/Stripe	34,000	SQFT	3 - Critical	\$ 127,310
PA Walsh Elementary School				Parking Lot/Pavement	AutoPavement	Seal/Stripe	22,000	SQFT	3 - Critical	\$ 29,660
PA Walsh Elementary School				Parking Lot/Pavement	AutoPavement	Seal/Stripe	5,200	SQFT	3 - Critical	\$ 7,010
PA Walsh Elementary School				Hardcourt/Pavement	Hardcourt	Remove & Replace	1,200	SQFT	3 - Critical	\$ 24,710
PA Walsh Elementary School				Hardcourt/Pavement	Hardcourt	Remove & Replace	2,500	SQFT	3 - Critical	\$ 51,490
PA Walsh Elementary School	B2	Classrooms 1-10	1	HVAC	RoofTopPackage	4-Ton	1	EA	3 - Critical	\$ 30,230
PA Walsh Elementary School	B2	Classrooms 1-10	2	HVAC	RoofTopPackage	4-Ton	1	EA	3 - Critical	\$ 30,230
PA Walsh Elementary School	B2	Classrooms 1-10	3	HVAC	RoofTopPackage	4-Ton	1	EA	3 - Critical	\$ 30,230
PA Walsh Elementary School	B2	Classrooms 1-10	4	HVAC	RoofTopPackage	4-Ton	1	EA	3 - Critical	\$ 30,230
PA Walsh Elementary School	B2	Classrooms 1-10	5	HVAC	RoofTopPackage	4-Ton	1	EA	3 - Critical	\$ 30,230
PA Walsh Elementary School	B2	Classrooms 1-10	6	HVAC	RoofTopPackage	4-Ton	1	EA	3 - Critical	\$ 30,230
PA Walsh Elementary School	B2	Classrooms 1-10	7	HVAC	RoofTopPackage	4-Ton	1	EA	3 - Critical	\$ 30,230
PA Walsh Elementary School	B2	Classrooms 1-10	8	HVAC	RoofTopPackage	4-Ton	1	EA	3 - Critical	\$ 30,230
PA Walsh Elementary School	B2	Classrooms 1-10	9	HVAC	RoofTopPackage	4-Ton	1	EA	3 - Critical	\$ 30,230
PA Walsh Elementary School	B2	Classrooms 1-10	10	HVAC	RoofTopPackage	4-Ton	1	EA	3 - Critical	\$ 30,230
PA Walsh Elementary School			PRINCIPALS OFF	HVAC	RoofTopPackage	4-Ton	1	EA	3 - Critical	\$ 30,230
PA Walsh Elementary School	B1	Administration	ADMIN	HVAC	RoofTopPackage	4-Ton	1	EA	3 - Critical	\$ 30,230
PA Walsh Elementary School	B3	MPR	MPR WEST	HVAC	RoofTopPackage	4-Ton	1	EA	3 - Critical	\$ 30,230
PA Walsh Elementary School	B3	MPR	MPR EAST	HVAC	RoofTopPackage	4-Ton	1	EA	3 - Critical	\$ 30,230
PA Walsh Elementary School	B4	Classrooms 11-19	11	HVAC	RoofTopPackage	4-Ton	1	EA	3 - Critical	\$ 30,230
PA Walsh Elementary School	B4	Classrooms 11-19	12	HVAC	RoofTopPackage	4-Ton	1	EA	3 - Critical	\$ 30,230
PA Walsh Elementary School	B4	Classrooms 11-19	13	HVAC	RoofTopPackage	4-Ton	1	EA	3 - Critical	\$ 30,230
PA Walsh Elementary School	B4	Classrooms 11-19	14	HVAC	RoofTopPackage	4-Ton	1	EA	3 - Critical	\$ 30,230
PA Walsh Elementary School	B4	Classrooms 11-19	15	HVAC	RoofTopPackage	4-Ton	1	EA	3 - Critical	\$ 30,230
PA Walsh Elementary School	B4	Classrooms 11-19	16	HVAC	RoofTopPackage	4-Ton	1	EA	3 - Critical	\$ 30,230
PA Walsh Elementary School	B4	Classrooms 11-19	17	HVAC	RoofTopPackage	4-Ton	1	EA	3 - Critical	\$ 30,230
PA Walsh Elementary School	B4	Classrooms 11-19	18	HVAC	RoofTopPackage	4-Ton	1	EA	3 - Critical	\$ 30,230
PA Walsh Elementary School	B4	Classrooms 11-19	19	HVAC	RoofTopPackage	4-Ton	1	EA	3 - Critical	\$ 30,230
PA Walsh Elementary School			ROOM 20	HVAC	RoofTopPackage	4-Ton	1	EA	3 - Critical	\$ 30,230
PA Walsh Elementary School				Fire Alarm System Upgrade	Elementary School		44,832	SQFT	1 - Recommend Improvement	\$ 470,030



**PARADISE VALLEY ELEMENTARY SCHOOL
1400 LA CROSSE DRIVE
MORGAN HILL, CA 95037**

SUMMARY

- Built in 1978
- 8.4 acre site
- 28 Regular classrooms
- 33 Total classrooms
- 48,000 SF of buildings
- 372 Students

The following projects are the higher priority scopes of work from a facility management perspective.

- Replace roofing
- Replace mechanical systems
- Replacement of fire alarm system
- Replace pavement

**PARADISE VALLEY ELEMENTARY SCHOOL
1400 LA CROSSE DRIVE
MORGAN HILL, CA 95037**

SITE PLAN



PARADISE VALLEY ELEMENTARY SCHOOL
Needs Assessment Cost Summary

Cost Information Summary By Scope of Work By School*					
School / Scope of Work	No Improvements Necessary	Recommend Improvements But not Necessary	Improvements Needed Nearing End of Life Cycle But Have Time	Improvements Needed Functional But at End of Life Cycle	Total
Paradise Valley Elementary School					
Fire Alarm System Upgrade	433,360	-	-	-	433,360
HVAC	1,171,360	-	-	-	1,171,360
Parking Lot/Pavement	10,850	-	-	2,347,180	2,358,030
Hardcourt/Pavement	-	-	-	-	-
Roof	2,801,610	-	-	-	2,801,610
School Total:	\$ 4,417,180	\$ -	\$ -	\$ 2,347,180	\$ 6,764,360

PARADISE VALLEY ELEMENTARY SCHOOL

DATA

School	Building ID	Building Description	Room ID	Item	Item Type	Item Sub-Type	Qty	UOM	Assessed Condition	Estimated Cost (Rounded)
Paradise Valley Elementary School	B1	Kindergarten		Roof	Built-Up		4,801	SQFT	0 - No Improvement Required	\$ 215,740
Paradise Valley Elementary School	B2	Office, Classroom 12		Roof	Built-Up		24,000	SQFT	0 - No Improvement Required	\$ 1,078,380
Paradise Valley Elementary School	B3	Classrooms 13-22		Roof	Built-Up		24,000	SQFT	0 - No Improvement Required	\$ 1,078,380
Paradise Valley Elementary School	B4	Portables 23-27		Roof	Built-Up		3,375	SQFT	0 - No Improvement Required	\$ 151,650
Paradise Valley Elementary School				Parking Lot/Pavement	AutoPavement	Remove & Replace	32,000	SQFT	3 - Critical	\$ 754,870
Paradise Valley Elementary School				Parking Lot/Pavement	AutoPavement	Remove & Replace	67,500	SQFT	3 - Critical	\$ 1,592,310
Paradise Valley Elementary School				Parking Lot/Pavement	AutoPavement	Seal/Stripe	8,050	SQFT	0 - No Improvement Required	\$ 10,850
Paradise Valley Elementary School				Fire Alarm System Upgrade	Elementary School		41,334	SQFT	0 - No Improvement Required	\$ 433,360
Paradise Valley Elementary School	B2	Office, Classroom 12	Admin	HVAC	RoofTopPackage	4-Ton	1	EA	0 - No Improvement Required	\$ 30,230
Paradise Valley Elementary School	B2	Office, Classroom 12	Staff	HVAC	RoofTopPackage	4-Ton	1	EA	0 - No Improvement Required	\$ 30,230
Paradise Valley Elementary School	B3	Classrooms 13-22	Room 10	HVAC	RoofTopPackage	4-Ton	1	EA	0 - No Improvement Required	\$ 30,230
Paradise Valley Elementary School	B3	Classrooms 13-22	Room 9	HVAC	RoofTopPackage	4-Ton	1	EA	0 - No Improvement Required	\$ 30,230
Paradise Valley Elementary School	B3	Classrooms 13-22	Room 8	HVAC	RoofTopPackage	4-Ton	1	EA	0 - No Improvement Required	\$ 30,230
Paradise Valley Elementary School	B3	Classrooms 13-22	Room 7	HVAC	RoofTopPackage	4-Ton	1	EA	0 - No Improvement Required	\$ 30,230
Paradise Valley Elementary School	B3	Classrooms 13-22	Room 6	HVAC	RoofTopPackage	4-Ton	1	EA	0 - No Improvement Required	\$ 30,230
Paradise Valley Elementary School	B3	Classrooms 13-22	Room 5	HVAC	RoofTopPackage	4-Ton	1	EA	0 - No Improvement Required	\$ 30,230
Paradise Valley Elementary School	B3	Classrooms 13-22	Room 4	HVAC	RoofTopPackage	4-Ton	1	EA	0 - No Improvement Required	\$ 30,230
Paradise Valley Elementary School	B3	Classrooms 13-22	.HSA	HVAC	RoofTopPackage	4-Ton	1	EA	0 - No Improvement Required	\$ 30,230
Paradise Valley Elementary School	B3	Classrooms 13-22	Center Admin 1	HVAC	RoofTopPackage	7.5-Ton	1	EA	0 - No Improvement Required	\$ 56,670
Paradise Valley Elementary School	B3	Classrooms 13-22	Center Admin 2	HVAC	RoofTopPackage	7.5-Ton	1	EA	0 - No Improvement Required	\$ 56,670
Paradise Valley Elementary School	B2	Office, Classroom 12	Room 11	HVAC	WallMountedPackage	4-Ton	1	EA	0 - No Improvement Required	\$ 30,230
Paradise Valley Elementary School	B2	Office, Classroom 12	Room 12	HVAC	WallMountedPackage	4-Ton	1	EA	0 - No Improvement Required	\$ 30,230
Paradise Valley Elementary School	B3	Classrooms 13-22	Room 13	HVAC	WallMountedPackage	4-Ton	1	EA	0 - No Improvement Required	\$ 30,230
Paradise Valley Elementary School	B3	Classrooms 13-22	Room 14	HVAC	WallMountedPackage	4-Ton	1	EA	0 - No Improvement Required	\$ 30,230
Paradise Valley Elementary School	B3	Classrooms 13-22	Room 15	HVAC	WallMountedPackage	4-Ton	1	EA	0 - No Improvement Required	\$ 30,230
Paradise Valley Elementary School	B3	Classrooms 13-22	Room 16	HVAC	WallMountedPackage	4-Ton	1	EA	0 - No Improvement Required	\$ 30,230
Paradise Valley Elementary School	B2	Office, Classroom 12	Theater 1	HVAC	RoofTopPackage	24-Ton	1	EA	0 - No Improvement Required	\$ 181,350
Paradise Valley Elementary School	B2	Office, Classroom 12	Theater 2	HVAC	RoofTopPackage	4-Ton	1	EA	0 - No Improvement Required	\$ 30,230
Paradise Valley Elementary School	B2	Office, Classroom 12	Design Lab 1	HVAC	RoofTopPackage	4-Ton	1	EA	0 - No Improvement Required	\$ 30,230
Paradise Valley Elementary School	B2	Office, Classroom 12	Design Lab 2	HVAC	RoofTopPackage	4-Ton	1	EA	0 - No Improvement Required	\$ 30,230
Paradise Valley Elementary School	B4	Portables 23-27	Room 23	HVAC	RoofTopPackage	4-Ton	1	EA	0 - No Improvement Required	\$ 30,230
Paradise Valley Elementary School	B2	Office, Classroom 12	Exploration Ctr	HVAC	RoofTopPackage	4-Ton	1	EA	0 - No Improvement Required	\$ 30,230
Paradise Valley Elementary School	B2	Office, Classroom 12	Room 24	HVAC	RoofTopPackage	4-Ton	1	EA	0 - No Improvement Required	\$ 30,230
Paradise Valley Elementary School	B2	Office, Classroom 12	Speech	HVAC	RoofTopPackage	4-Ton	1	EA	0 - No Improvement Required	\$ 30,230
Paradise Valley Elementary School	B2	Office, Classroom 12	Kitchen	HVAC	RoofTopPackage	4-Ton	1	EA	0 - No Improvement Required	\$ 30,230
Paradise Valley Elementary School	B2	Office, Classroom 12	MPR North	HVAC	RoofTopPackage	4-Ton	1	EA	0 - No Improvement Required	\$ 30,230
Paradise Valley Elementary School	B2	Office, Classroom 12	MPR South	HVAC	RoofTopPackage	4-Ton	1	EA	0 - No Improvement Required	\$ 30,230
Paradise Valley Elementary School	B2	Office, Classroom 12	Room 1	HVAC	RoofTopPackage	4-Ton	1	EA	0 - No Improvement Required	\$ 30,230
Paradise Valley Elementary School	B2	Office, Classroom 12	Room 2	HVAC	RoofTopPackage	4-Ton	1	EA	0 - No Improvement Required	\$ 30,230
Paradise Valley Elementary School	B2	Office, Classroom 12	Room 3	HVAC	RoofTopPackage	4-Ton	1	EA	0 - No Improvement Required	\$ 30,230



**SAN MARTIN/GWINN ENVIRONMENTAL SCIENCE ACADEMY
13745 LLAGAS AVE
SAN MARTIN, CA 95046**

SUMMARY

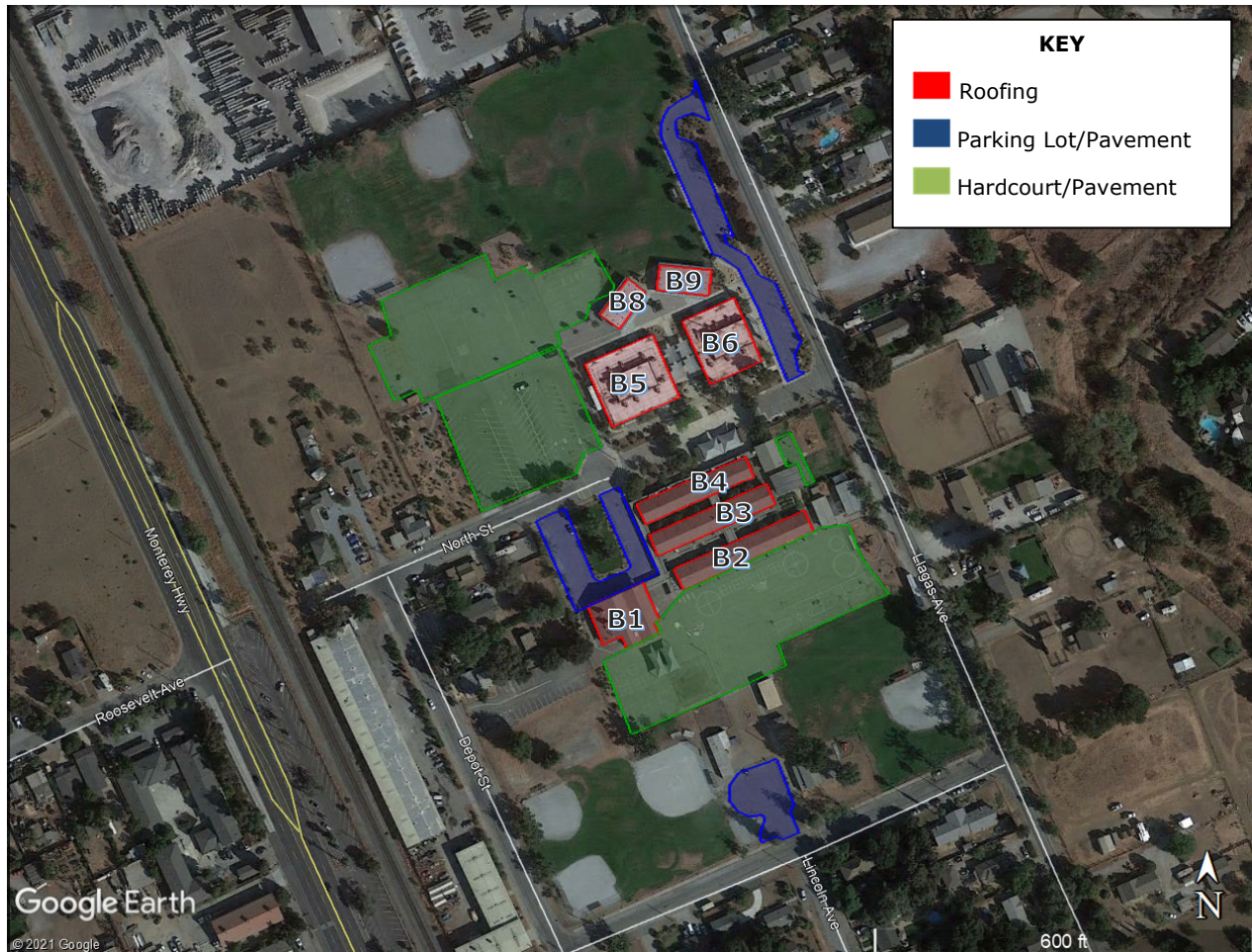
- Built in 1966 (San Martin) and 1964 (Gwinn)
- 18.73 acre site
- 36 Regular classrooms
- 63,000 SF of buildings
- 674 Students

The following projects are the higher priority scopes of work from a facility management perspective.

- Replace roofing
- Replace mechanical systems
- Replacement of fire alarm system
- Replace pavement

**SAN MARTIN/GWINN ENVIRONMENTAL SCIENCE ACADEMY
13745 LLAGAS AVE
SAN MARTIN, CA 95046**

SITE PLAN



SAN MARTIN/GWINN ELEMENTARY SCHOOL

Needs Assessment Cost Summary

Cost Information Summary By Scope of Work By School*					
School / Scope of Work	Not Required	Recommended	Necessary But Not Critical	Critical	Total
San Martin/Gwinn Elementary School					
Fire Alarm System Upgrade	-	-	-	571,260	571,260
HVAC	608,360	-	30,230	743,210	1,381,800
Parking Lot/Pavement	-	-	-	1,011,460	1,011,460
Hardcourt/Pavement	-	-	-	2,518,670	2,518,670
Roof	1,300,170	-	-	753,740	2,053,910
School Total:	\$ 1,908,530	\$ -	\$ 30,230	\$ 5,598,340	\$ 7,537,100

SAN MARTIN/GWINN ELEMENTARY SCHOOL

DATA

School	Building ID	Building Description	Room ID	Item	Item Type	Item Sub-Type	Qty	UOM	Assessed Condition	Estimated Cost (Rounded)
San Martin/Gwinn Elementary School	B1	MPR		Roof	Asphalt Shingle		7,458	SQFT	3 - Critical	\$ 167,550
San Martin/Gwinn Elementary School	B2	Classrooms 13-18		Roof	Asphalt Shingle		9,771	SQFT	3 - Critical	\$ 219,530
San Martin/Gwinn Elementary School	B3	Classrooms 6-12		Roof	Asphalt Shingle		8,525	SQFT	3 - Critical	\$ 191,530
San Martin/Gwinn Elementary School	B4	Office, Classrooms 1-5		Roof	Asphalt Shingle		7,795	SQFT	3 - Critical	\$ 175,130
San Martin/Gwinn Elementary School	B5	Classrooms 20-29		Roof	TPO Single Ply		12,583	SQFT	0 - No Improvement Required	\$ 565,390
San Martin/Gwinn Elementary School	B6	Classrooms 23-28		Roof	TPO Single Ply		9,853	SQFT	0 - No Improvement Required	\$ 442,720
San Martin/Gwinn Elementary School	B8	Classrooms 32-34		Roof	Metal		3,000	SQFT	0 - No Improvement Required	\$ 146,030
San Martin/Gwinn Elementary School	B9	Classrooms 35-37		Roof	Metal		3,000	SQFT	0 - No Improvement Required	\$ 146,030
San Martin/Gwinn Elementary School				Parking Lot/Pavement	AutoPavement	Seal/Stripe	8,600	SQFT	3 - Critical	\$ 11,590
San Martin/Gwinn Elementary School				Hardcourt/Pavement	Hardcourt	Remove & Replace	1,800	SQFT	3 - Critical	\$ 37,070
San Martin/Gwinn Elementary School				Hardcourt/Pavement	Hardcourt	Remove & Replace	65,000	SQFT	3 - Critical	\$ 1,338,620
San Martin/Gwinn Elementary School				Parking Lot/Pavement	AutoPavement	Seal/Stripe	14,500	SQFT	3 - Critical	\$ 19,550
San Martin/Gwinn Elementary School				Parking Lot/Pavement	AutoPavement	Seal/Stripe	18,500	SQFT	3 - Critical	\$ 24,940
San Martin/Gwinn Elementary School				Parking Lot/Pavement	AutoPavement	Remove & Replace	40,500	SQFT	3 - Critical	\$ 955,380
San Martin/Gwinn Elementary School				Hardcourt/Pavement	Hardcourt	Remove & Replace	55,500	SQFT	3 - Critical	\$ 1,142,980
San Martin/Gwinn Elementary School				Fire Alarm System Upgrade	Elementary School		54,487	SQFT	3 - Critical	\$ 571,260
San Martin/Gwinn Elementary School	B1	MPR	MPR - AC-1	HVAC	RoofTopPackage	7.5-Ton	1	EA	3 - Critical	\$ 56,670
San Martin/Gwinn Elementary School	B1	MPR	MPR - AC-2	HVAC	RoofTopPackage	7.5-Ton	1	EA	3 - Critical	\$ 56,670
San Martin/Gwinn Elementary School	B1	MPR	MPR - Kitchen Exhaust Fan	HVAC	Exhaust Fan-Kitchen		1	EA	3 - Critical	\$ 18,720
San Martin/Gwinn Elementary School	B1	MPR	MPR - Restroom Exhaust Fan	HVAC	Exhaust Fan-RestRoom		1	EA	3 - Critical	\$ 6,550
San Martin/Gwinn Elementary School	B4	Office, Classrooms 1-5	RM 1	HVAC	RoofTopPackage	4-Ton	1	EA	0 - No Improvement Required	\$ 30,230
San Martin/Gwinn Elementary School	B4	Office, Classrooms 1-5	RM 2	HVAC	RoofTopPackage	4-Ton	1	EA	0 - No Improvement Required	\$ 30,230
San Martin/Gwinn Elementary School	B4	Office, Classrooms 1-5	RM 3	HVAC	RoofTopPackage	4-Ton	1	EA	0 - No Improvement Required	\$ 30,230
San Martin/Gwinn Elementary School	B4	Office, Classrooms 1-5	RM 4	HVAC	RoofTopPackage	4-Ton	1	EA	0 - No Improvement Required	\$ 30,230
San Martin/Gwinn Elementary School	B4	Office, Classrooms 1-5	RM 5	HVAC	RoofTopPackage	4-Ton	1	EA	0 - No Improvement Required	\$ 30,230
San Martin/Gwinn Elementary School	B3	Classrooms 6-12	RM 6	HVAC	RoofTopPackage	4-Ton	1	EA	0 - No Improvement Required	\$ 30,230
San Martin/Gwinn Elementary School	B3	Classrooms 6-12	RM 7 (Portable)	HVAC	HeatPump	4-Ton	1	EA	0 - No Improvement Required	\$ 30,230
San Martin/Gwinn Elementary School	B3	Classrooms 6-12	RM 8	HVAC	RoofTopPackage	4-Ton	1	EA	0 - No Improvement Required	\$ 30,230
San Martin/Gwinn Elementary School	B3	Classrooms 6-12	RM 9	HVAC	RoofTopPackage	4-Ton	1	EA	0 - No Improvement Required	\$ 30,230
San Martin/Gwinn Elementary School	B3	Classrooms 6-12	RM 11	HVAC	RoofTopPackage	4-Ton	1	EA	0 - No Improvement Required	\$ 30,230
San Martin/Gwinn Elementary School	B3	Classrooms 6-12	RM 12	HVAC	RoofTopPackage	4-Ton	1	EA	0 - No Improvement Required	\$ 30,230
San Martin/Gwinn Elementary School	B2	Classrooms 13-18	RM 13	HVAC	RoofTopPackage	4-Ton	1	EA	3 - Critical	\$ 30,230
San Martin/Gwinn Elementary School	B2	Classrooms 13-18	RM 14	HVAC	RoofTopPackage	4-Ton	1	EA	2 - Necessary But Not Critical	\$ 30,230
San Martin/Gwinn Elementary School	B2	Classrooms 13-18	RM 15	HVAC	RoofTopPackage	4-Ton	1	EA	3 - Critical	\$ 30,230
San Martin/Gwinn Elementary School	B2	Classrooms 13-18	RM 16	HVAC	RoofTopPackage	4-Ton	1	EA	3 - Critical	\$ 30,230
San Martin/Gwinn Elementary School	B2	Classrooms 13-18	RM 17	HVAC	RoofTopPackage	4-Ton	1	EA	3 - Critical	\$ 30,230
San Martin/Gwinn Elementary School	B2	Classrooms 13-18	RM 18	HVAC	RoofTopPackage	4-Ton	1	EA	3 - Critical	\$ 30,230
San Martin/Gwinn Elementary School			RM 19	HVAC	RoofTopPackage	4-Ton	1	EA	3 - Critical	\$ 30,230
San Martin/Gwinn Elementary School	B5	Classrooms 20-29	RM 20 - AC-16	HVAC	RoofTopPackage	4-Ton	1	EA	3 - Critical	\$ 30,230
San Martin/Gwinn Elementary School			Staff Lounge	HVAC	RoofTopPackage	4-Ton	1	EA	0 - No Improvement Required	\$ 30,230
San Martin/Gwinn Elementary School			Principal Office	HVAC	MiniSplitHeatPump	1.5-Ton	1	EA	0 - No Improvement Required	\$ 11,330
San Martin/Gwinn Elementary School			Conference Rm	HVAC	MiniSplitHeatPump	1.5-Ton	1	EA	0 - No Improvement Required	\$ 11,330
San Martin/Gwinn Elementary School	B5	Classrooms 20-29	RM 29	HVAC	RoofTopPackage	4-Ton	1	EA	3 - Critical	\$ 30,230
San Martin/Gwinn Elementary School			Admin	HVAC	RoofTopPackage	4-Ton	1	EA	0 - No Improvement Required	\$ 30,230
San Martin/Gwinn Elementary School			RM 30 - AC-13	HVAC	RoofTopPackage	4-Ton	1	EA	3 - Critical	\$ 30,230
San Martin/Gwinn Elementary School			RM 31 - AC-14	HVAC	RoofTopPackage	4-Ton	1	EA	3 - Critical	\$ 30,230
San Martin/Gwinn Elementary School			Break out room	HVAC	MiniSplitHeatPump	1.5-Ton	1	EA	0 - No Improvement Required	\$ 11,330
San Martin/Gwinn Elementary School			Library - AC-5	HVAC	RoofTopPackage	4-Ton	1	EA	3 - Critical	\$ 30,230
San Martin/Gwinn Elementary School			Library - AC-7	HVAC	RoofTopPackage	4-Ton	1	EA	3 - Critical	\$ 30,230
San Martin/Gwinn Elementary School	B5	Classrooms 20-29	RM 21 - AC-9	HVAC	RoofTopPackage	4-Ton	1	EA	3 - Critical	\$ 30,230
San Martin/Gwinn Elementary School	B5	Classrooms 20-29	RM 22 - AC-10	HVAC	RoofTopPackage	4-Ton	1	EA	3 - Critical	\$ 30,230
San Martin/Gwinn Elementary School	B6	Classrooms 23-28	RM 23 - AC-8	HVAC	RoofTopPackage	4-Ton	1	EA	3 - Critical	\$ 30,230
San Martin/Gwinn Elementary School	B6	Classrooms 23-28	RM 24 - AC-6	HVAC	RoofTopPackage	4-Ton	1	EA	3 - Critical	\$ 30,230
San Martin/Gwinn Elementary School	B6	Classrooms 23-28	RM 25 - AC-1	HVAC	RoofTopPackage	4-Ton	1	EA	3 - Critical	\$ 30,230
San Martin/Gwinn Elementary School	B6	Classrooms 23-28	RM 26 - AC-2	HVAC	RoofTopPackage	4-Ton	1	EA	3 - Critical	\$ 30,230
San Martin/Gwinn Elementary School	B6	Classrooms 23-28	RM 27 - AC-3	HVAC	RoofTopPackage	4-Ton	1	EA	3 - Critical	\$ 30,230
San Martin/Gwinn Elementary School	B6	Classrooms 23-28	RM 28 - AC-4	HVAC	RoofTopPackage	4-Ton	1	EA	3 - Critical	\$ 30,230
San Martin/Gwinn Elementary School			RM 32	HVAC	WallMountedPackage	4-Ton	1	EA	0 - No Improvement Required	\$ 30,230
San Martin/Gwinn Elementary School			RM 33	HVAC	WallMountedPackage	4-Ton	1	EA	0 - No Improvement Required	\$ 30,230

SAN MARTIN/GWINN ELEMENTARY SCHOOL

DATA

School	Building ID	Building Description	Room ID	Item	Item Type	Item Sub-Type	Qty	UOM	Assessed Condition	Estimated Cost (Rounded)
San Martin/Gwinn Elementary School			RM 34	HVAC	WallMountedPackage	4-Ton	1	EA	0 - No Improvement Required	\$ 30,230
San Martin/Gwinn Elementary School			RM 35	HVAC	WallMountedPackage	4-Ton	1	EA	0 - No Improvement Required	\$ 30,230
San Martin/Gwinn Elementary School			RM 36	HVAC	WallMountedPackage	4-Ton	1	EA	0 - No Improvement Required	\$ 30,230
San Martin/Gwinn Elementary School			RM 37	HVAC	WallMountedPackage	4-Ton	1	EA	0 - No Improvement Required	\$ 30,230