

# Morgan Hill Unified 2020/21 Demographics & Enrollment Projections

Presented by:  
Ken Reynolds, SchoolWorks



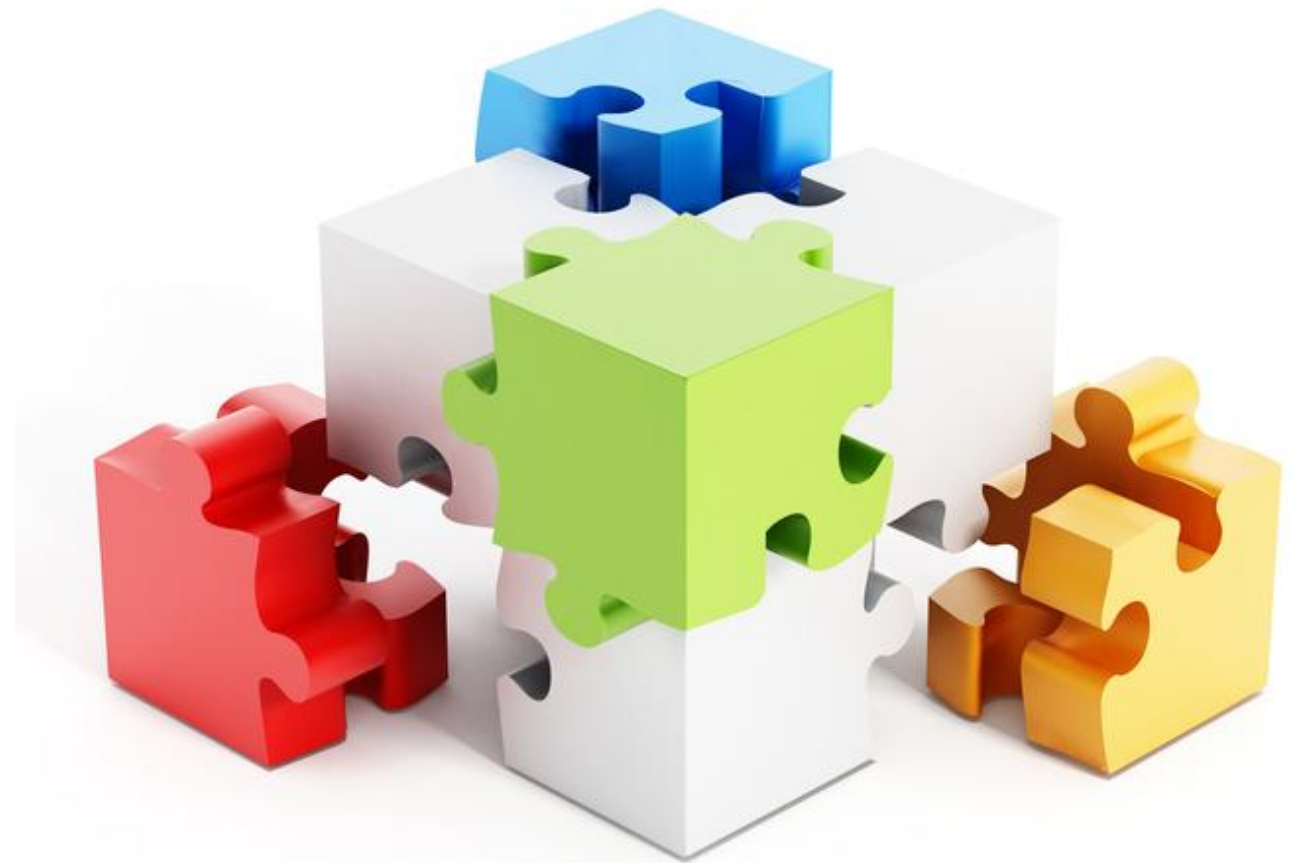
# INTRODUCTION

- ▶ Demographic Study & Enrollment Projections are meant to serve as a planning tool to help with both long and short term facility planning.
- ▶ It is a tool that helps identify certain facility planning issues such as capacity, utilization of existing facilities, planning for modernization and new construction projects, and attendance boundary redistricting.

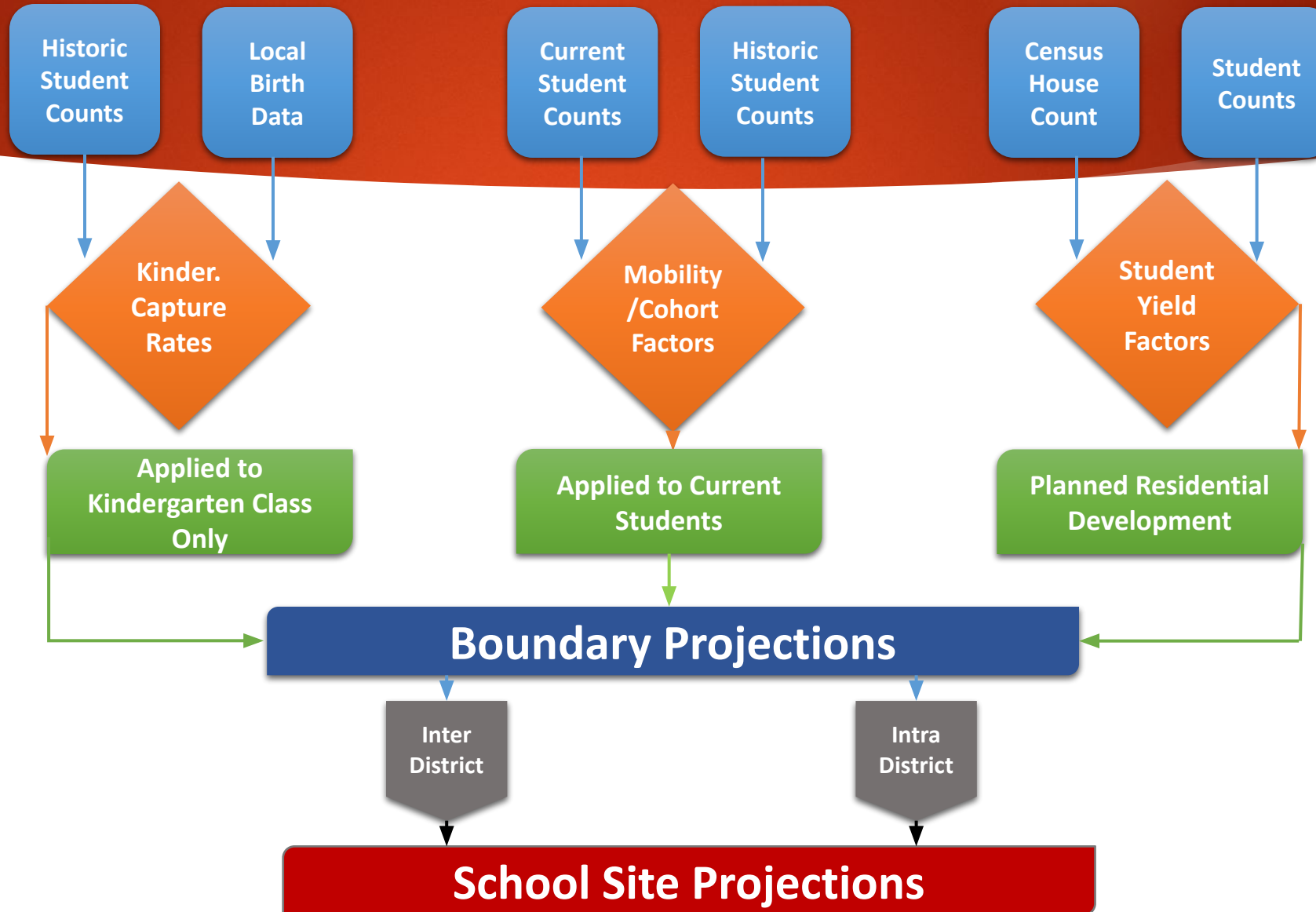


## DEMOGRAPHIC STUDY PUZZLE

- ▶ Demographic Studies examine the factors that influence school enrollments, namely trends in attendance patterns, birth rates, and housing development.
- ▶ The Study will provide information based on the current District enrollments and programs, local planning policies and residential development.
- ▶ As these factors change and timelines are adjusted, the Demographic Study should be revised to reflect the most current information.



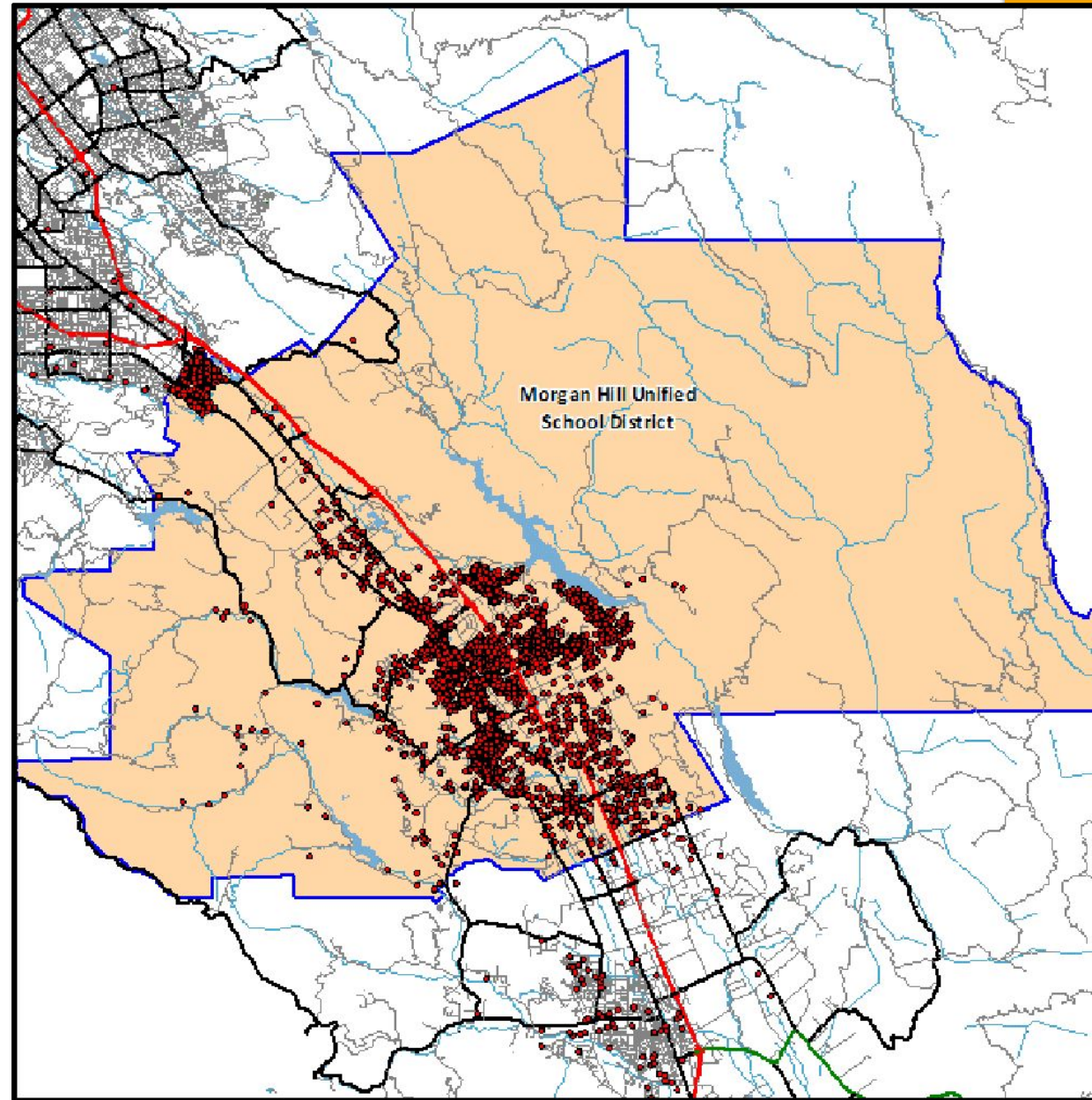
# METHODOLOGY





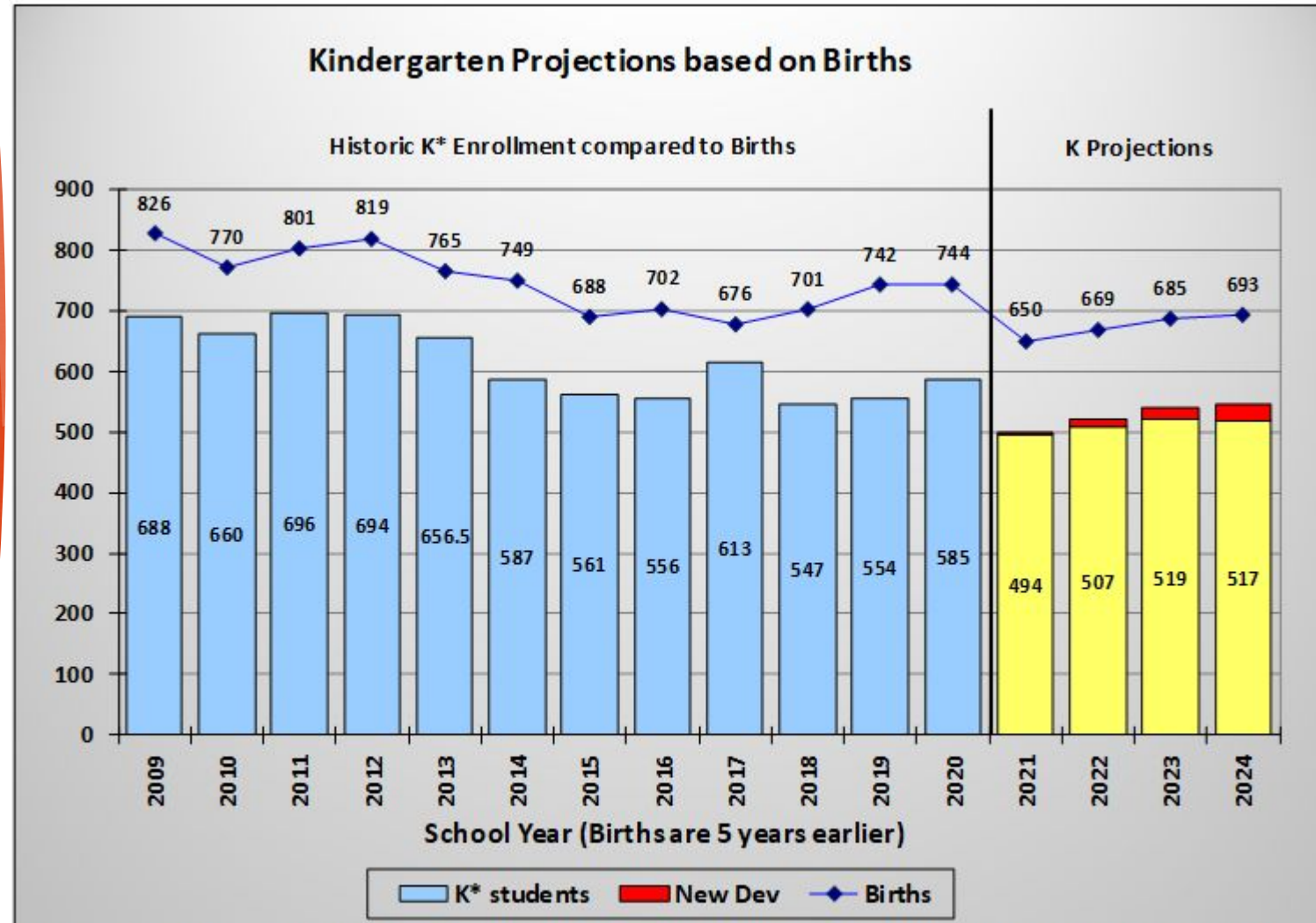
## DISTRICT MAP & STUDENT DISTRIBUTION

- ▶ District information is input into a GIS program for analysis.
- ▶ Students are “geocoded” based on their current residential address.



# BIRTH RATES

- This chart shows correlation between births in the District area and the number of kindergarten students attending schools five (5) years later.

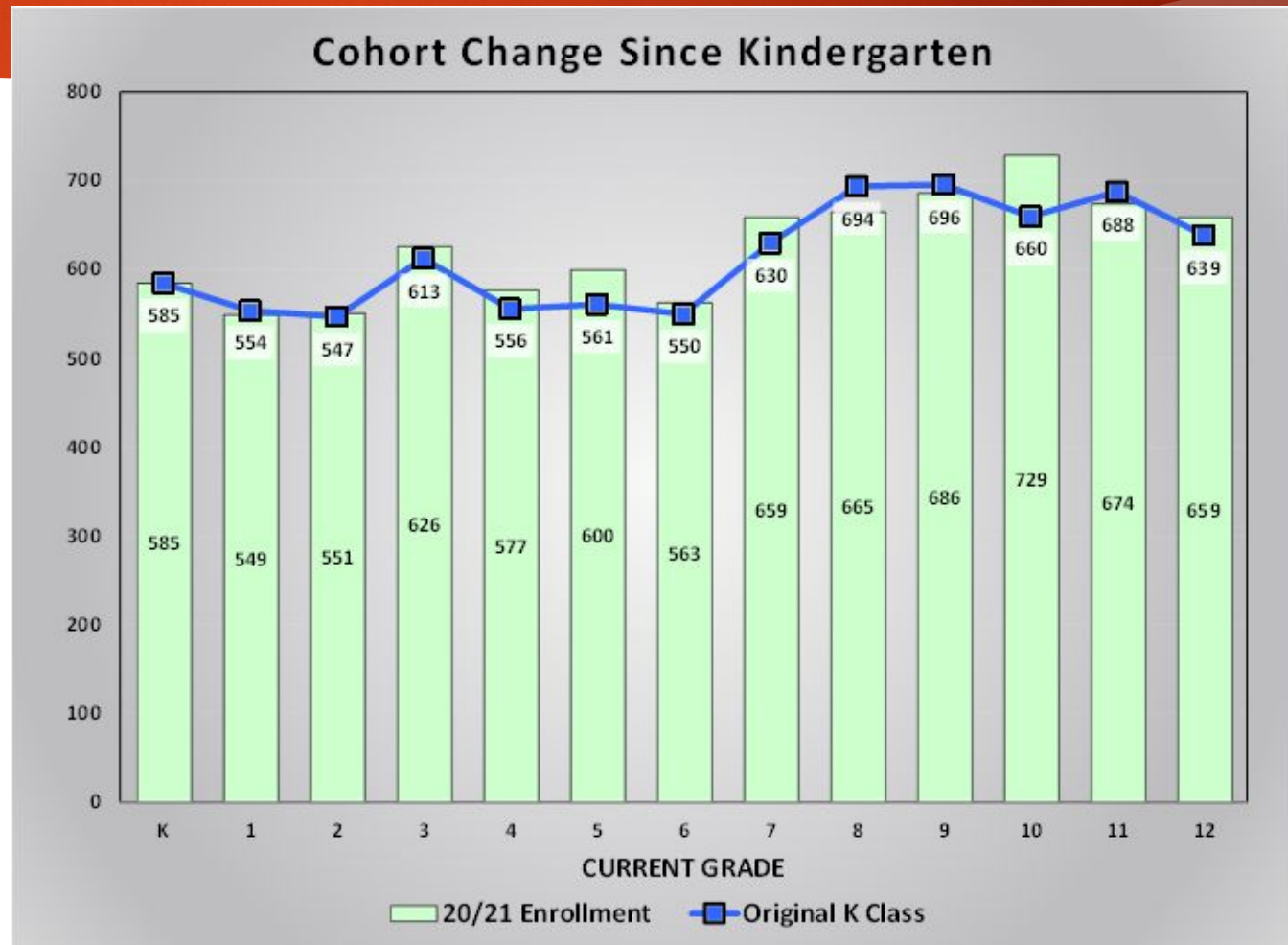


\*Kindergarten Totals may include some Transitional Kindergarten students for some of the past years to more accurately correlate a 12-month period of births to a 12-month period of enrollment.



# COHORT CHANGE SINCE KINDERGARTEN

This chart compares the original kindergarten class size to the current enrollment for each grade.



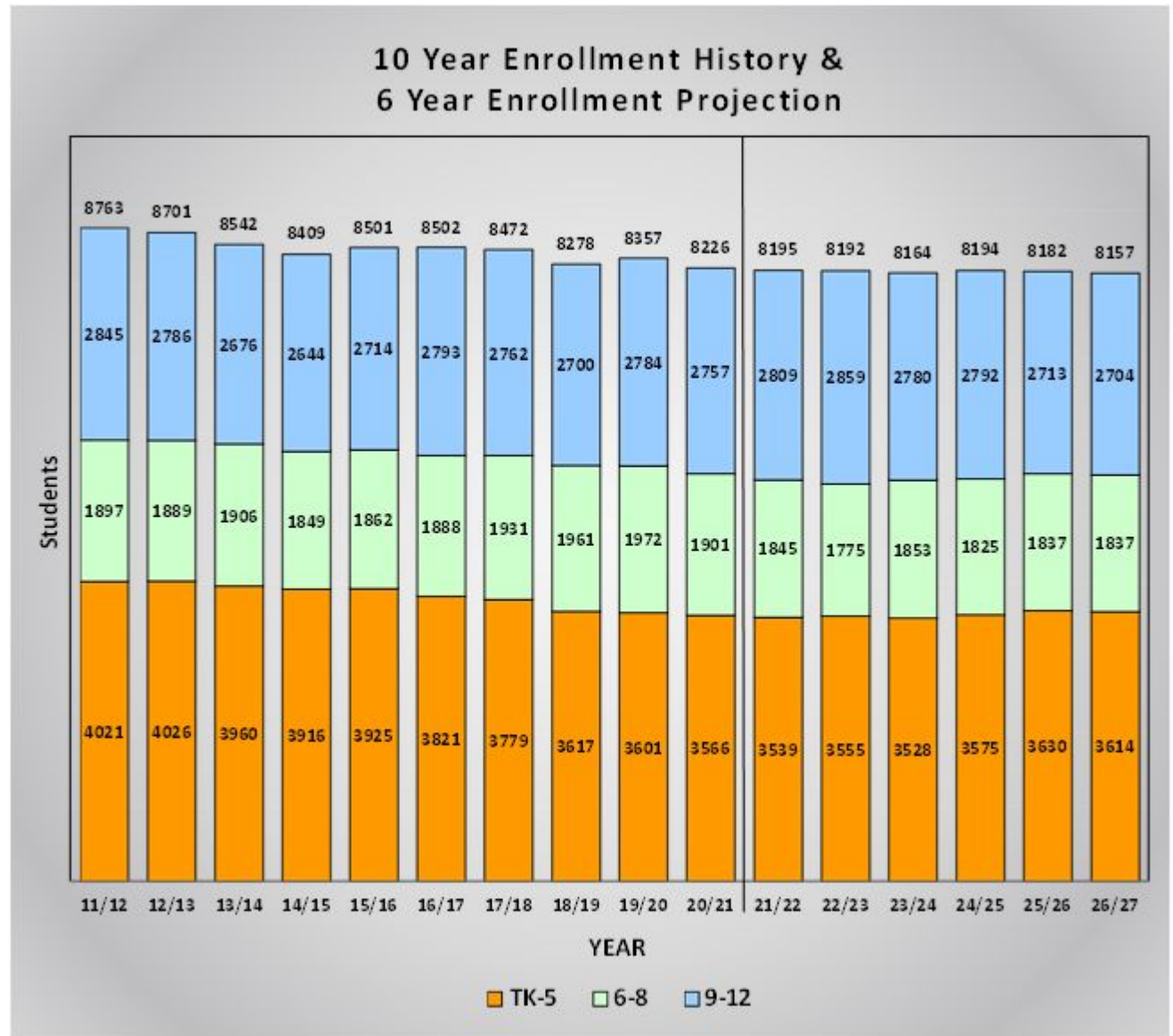
# HISTORIC ENROLLMENTS & COHORTS

Morgan Hill Unified School District								
Historic Enrollment and Cohorts								
Grade	CalPADS Enrollment				Historic Cohorts			Weighted Average
	17/18	18/19	19/20	20/21	17 to 18	18 to 19	19 to 20	
TK	153	121	139	103	-32	18	-36	-17.3
K	613	547	554	585	-66	7	31	6.8
1	549	607	561	549	-6	14	-5	1.2
2	580	551	623	551	2	16	-10	0.7
3	547	572	576	626	-8	25	3	8.5
4	662	566	590	577	19	18	1	9.7
5	670	653	558	600	-9	-8	10	0.8
6	665	654	661	563	-16	8	5	2.5
7	653	655	663	659	-10	9	-2	0.3
8	610	652	648	665	-1	-7	2	-1.5
9	696	684	736	686	74	84	38	59.3
10	715	692	687	729	-4	3	-7	-3.2
11	657	690	688	674	-25	-4	-13	-12.0
12	690	634	673	659	-23	-17	-29	-24.0
SDC	12	0	0	0	-12	0	0	-2.0
Totals	<b>8,472</b>	<b>8,278</b>	<b>8,357</b>	<b>8,226</b>	<b>-7.8</b>	<b>11.1</b>	<b>-0.8</b>	<b>2.0</b>
Annual Change:		-194	79	-131				



# ENROLLMENT

- This chart provides a summary of the last ten (10) years of historic enrollment and projected enrollment for the next six (6) years.



# CLASSROOM COUNTS & LOADING FACTORS

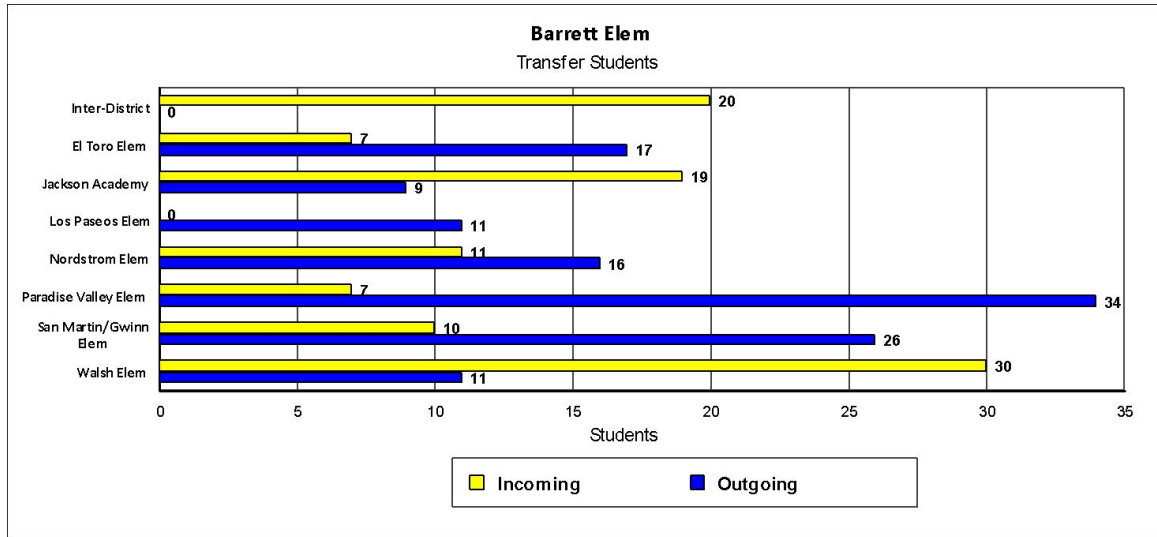
The capacity for each school was determined by using the following loading standards for each classroom identified:

<u>Grade</u>	<u>Loading</u>
TK	20
K-2	24
3-5	29
6-8	29
9-12	29

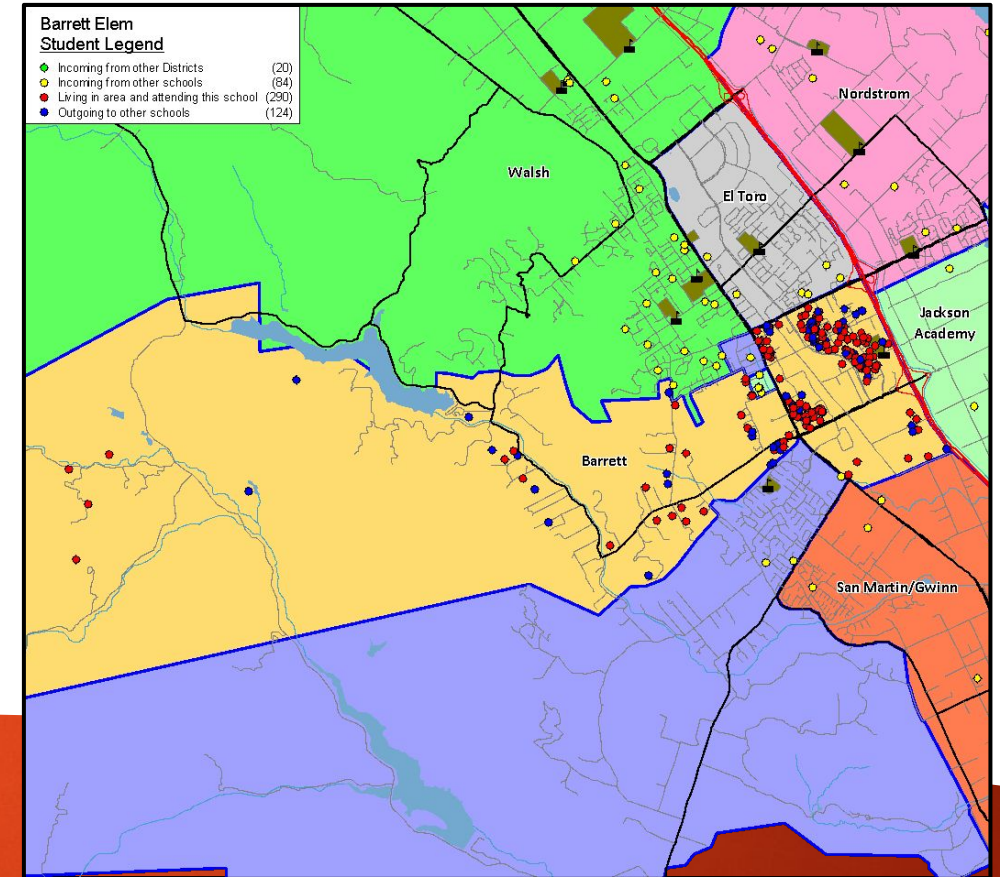
Page 18 (Demographic Study)

## Morgan Hill Unified School District Classroom Count Summary

<u>Elementary Schools</u>	<u>Net CR Count</u>
Barrett Elem	20
El Toro Elem	21
Jackson Academy	22
Los Paseos Elem	23
Nordstrom Elem	28
Paradise Valley Elem	20
San Martin/Gwinn Elem	31
Walsh Elem	27
<b>Sub-Totals</b>	<b>192</b>
<u>Middle Schools</u>	
Britton Middle	34
Murphy Middle	31
<b>Sub-Totals</b>	<b>65</b>
<u>High Schools</u>	
Live Oak High	54
Sobrato High	53
<b>Sub-Totals</b>	<b>107</b>
<u>Other Schools</u>	
Central High	17
<b>Sub-Totals</b>	<b>17</b>
<b>District Totals</b>	<b>381</b>



Sample of Map & Chart Provided For Each School



# DEMOGRAPHICS SAMPLE MAP



## ATTENDANCE MATRIX

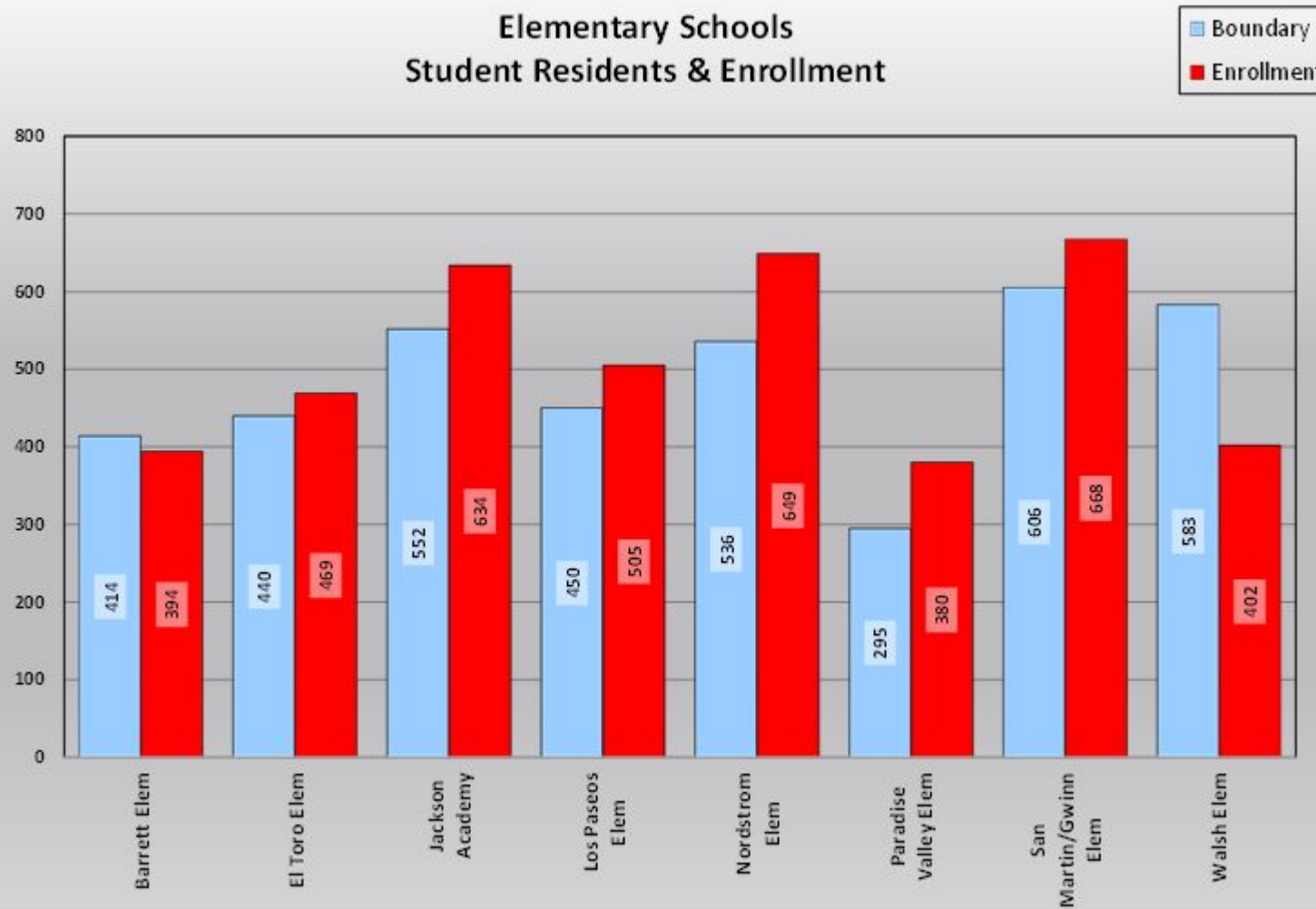
		SCHOOL OF ATTENDANCE													
		Barrett Elem	El Toro Elem	Jackson Academy	Los Paseos Elem	Nordstrom Elem	Paradise Valley Elem	San Martin/Gwinn Elem	Walsh Elem	Britton Middle	Murphy Middle	Live Oak High	Sobrato High	Central High	
R E S I D E N C E	SCHOOL: AREA														
	Inter-District	20	18	12	16	7	6	51	10	19	25	18	17	1	220
	Barrett Elem	290	17	9	11	16	34	26	11	0	0	0	0	0	414
	El Toro Elem	7	326	18	10	30	16	18	15	0	0	0	0	0	440
	Jackson Academy	19	25	399	0	19	9	40	17	26	9	0	0	0	563
	Los Paseos Elem	0	0	1	437	3	2	1	6	0	0	0	0	0	450
	Nordstrom Elem	11	9	26	2	469	6	10	3	0	0	0	0	0	536
	Paradise Valley Elem	7	3	9	5	12	236	18	14	0	0	0	0	0	304
	San Martin/Gwinn Elem	10	22	29	6	11	29	424	11	65	8	0	0	0	615
	Walsh Elem	30	48	17	18	79	42	36	313	0	0	0	0	0	583
	Britton Middle	0	0	48	0	0	0	27	0	389	37	0	0	0	501
	Murphy Middle	0	0	64	0	0	0	16	0	198	612	0	0	0	890
	Live Oak High	0	0	0	0	0	0	0	0	0	0	800	219	44	1,063
	Sobrato High	0	0	0	0	0	0	0	0	0	0	329	1,240	78	1,647
	Correction Factor*	0	1	2	0	3	0	1	2	-2	-7	0	0	0	0
Total Attending		394	469	634	505	649	380	668	402	695	684	1,147	1,476	123	8,226
Intra-Ins		84	124	221	52	170	138	192	77	289	54	329	219	122	2,071
Inter-Ins		20	18	12	16	7	6	51	10	19	25	18	17	1	220
Total In-Flow		104	142	233	68	177	144	243	87	308	79	347	236	123	2,291
Intra-Outs		124	114	164	13	67	68	191	270	112	278	263	407	0	2,071
Net Transfers		-20	28	69	55	110	76	52	-183	196	-199	84	-171	123	220
% In-Flow Students		26.4%	30.3%	36.8%	13.5%	27.3%	37.9%	36.4%	21.6%	44.3%	11.5%	30.3%	16.0%		27.9%
% Out-Flow Students		30.0%	25.9%	29.1%	2.9%	12.5%	22.4%	31.1%	46.3%	22.4%	31.2%	24.7%	24.7%		25.2%

\* The correction factor represents the difference between the student data download counts and the actual CalPADS counts.

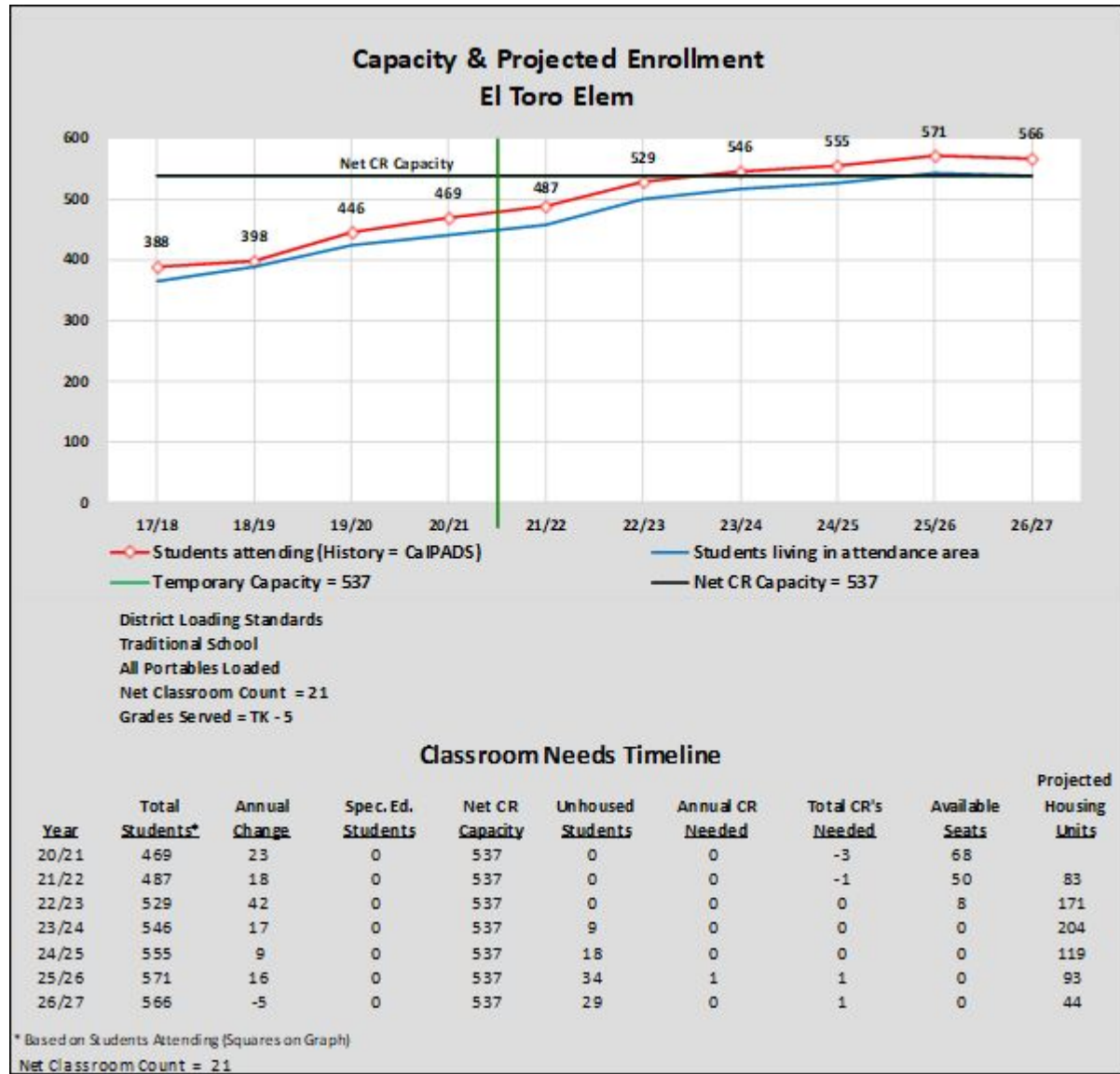
ATTENDANCE  
MATRIX

Page 45 (Demographic Study)

Elementary Schools  
Student Residents & Enrollment

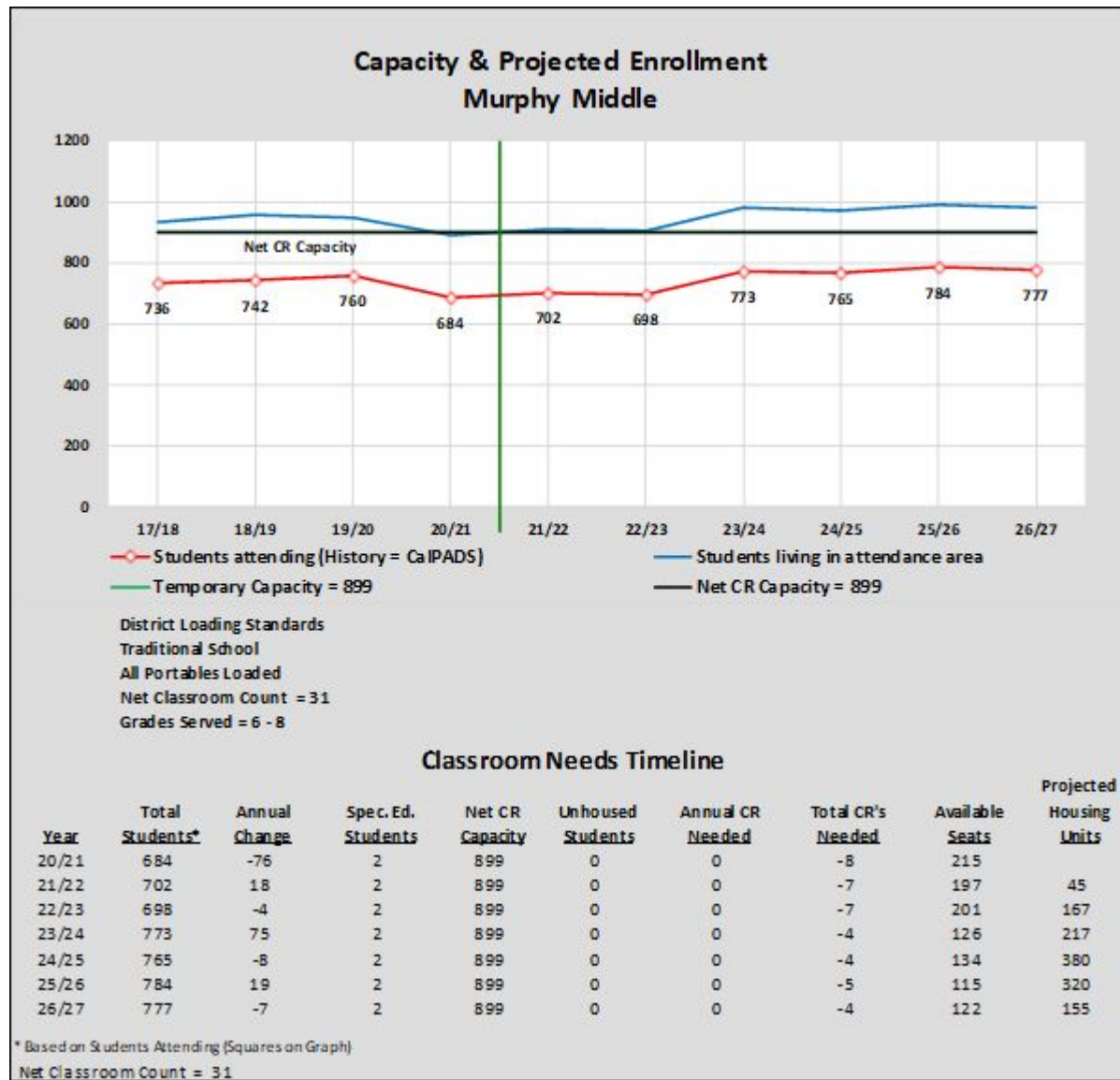


# STUDENTS IN BOUNDARY & ENROLLMENT COMPARISON

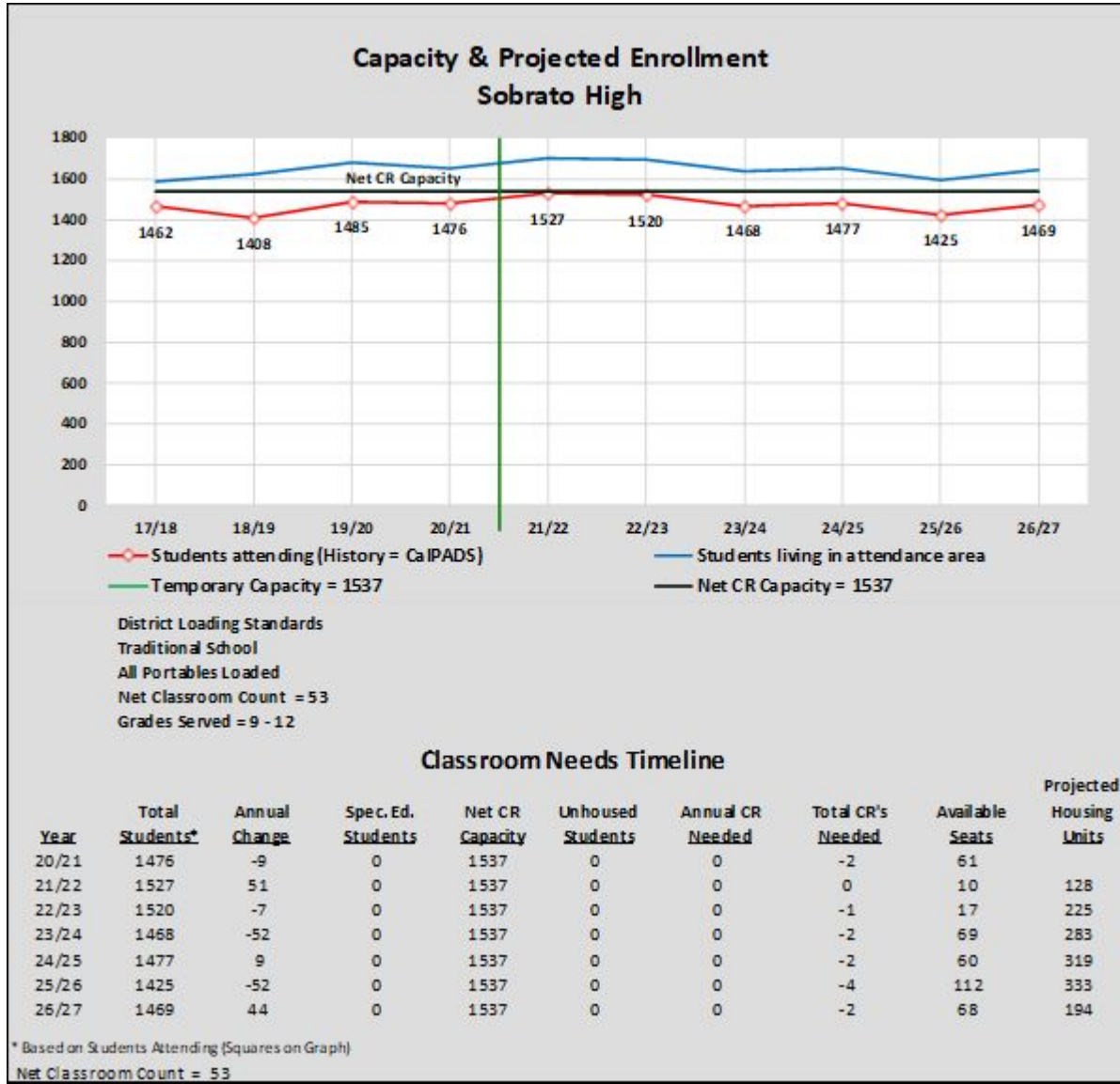


# EL TORO ELEM ENROLLMENT PROJECTION





# MURPHY MIDDLE ENROLLMENT PROJECTION



# SOBRATO HIGH ENROLLMENT PROJECTION

# UTILIZATION CHART

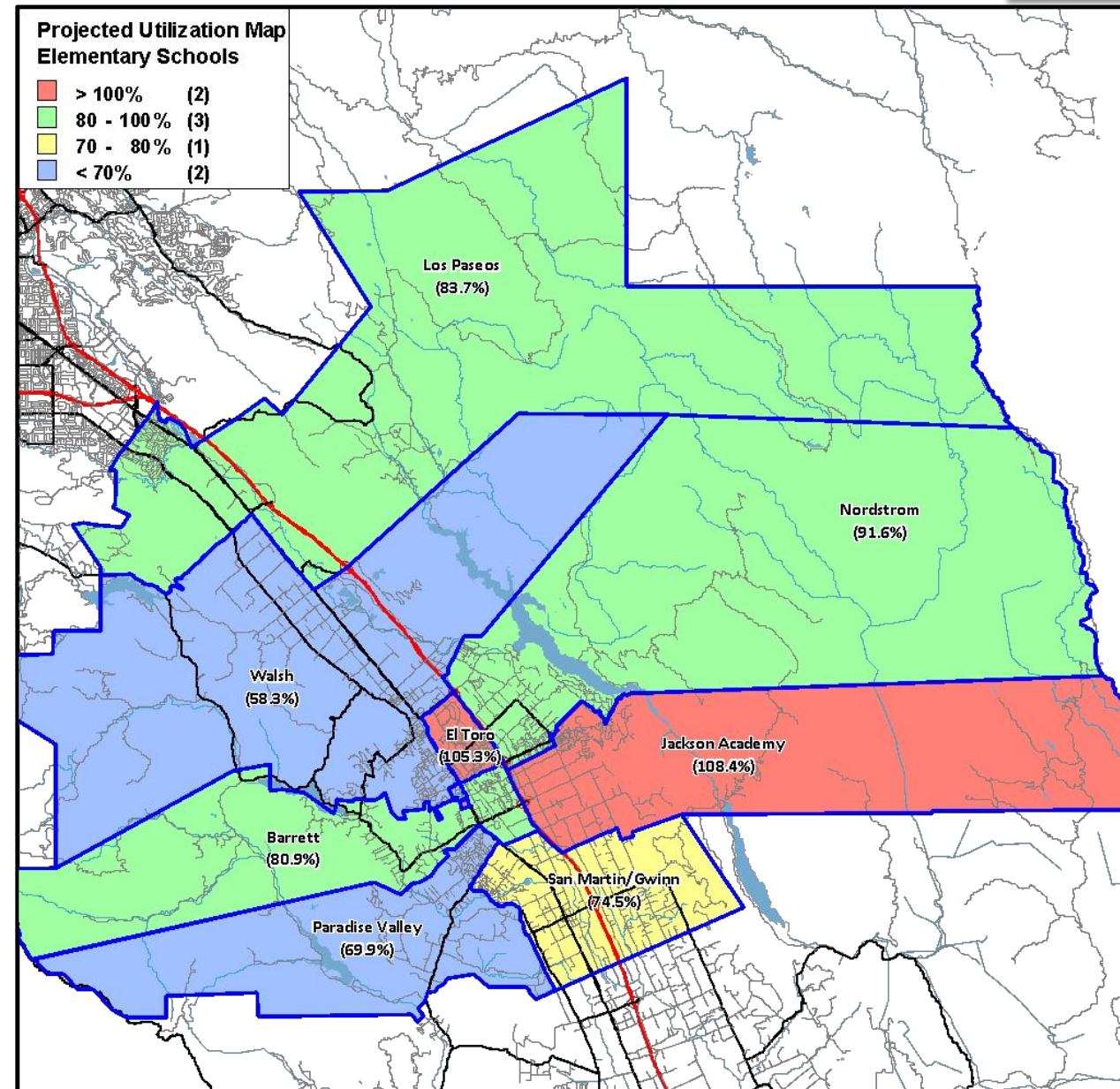
- The following chart shows the current and projected utilization rates for each school. It has been color coded with blue representing schools with a utilization rate of under 70%, yellow representing a utilization rate of at least 70% but under 80% and red for the schools that have over 100% utilization

School Facility Utilization			2020/21	2026/27	2020/21	2026/27
	Net	Net CR	Current	Projected	Current	Projected
<u>Elementary Schools</u>	<u>Classrooms</u>	<u>Capacity</u>	<u>Enrollment</u>	<u>Enrollment</u>	<u>Utilization</u>	<u>Utilization</u>
Barrett Elem	20	488	394	395	80.7%	80.9%
El Toro Elem	21	537	469	566	87.3%	105.3%
Jackson Academy	22	590	634	640	107.4%	108.4%
Los Paseos Elem	23	585	505	490	86.3%	83.7%
Nordstrom Elem	28	710	649	650	91.5%	91.6%
Paradise Valley Elem	20	488	380	341	77.9%	69.9%
San Martin/Gwinn Elem	31	817	668	609	81.7%	74.5%
Walsh Elem	27	691	402	403	58.2%	58.3%
<b>Sub-Totals</b>	<b>192</b>	<b>4,907</b>	<b>4,101</b>	<b>4,094</b>	<b>83.6%</b>	<b>83.4%</b>
<u>Middle Schools</u>						
Britton Middle	34	969	695	591	71.7%	61.0%
Murphy Middle	31	899	684	777	76.1%	86.4%
<b>Sub-Totals</b>	<b>65</b>	<b>1,868</b>	<b>1,379</b>	<b>1,368</b>	<b>73.8%</b>	<b>73.2%</b>
<u>High Schools</u>						
Live Oak High	54	1,532	1,147	1,108	74.9%	72.3%
Sobrato High	53	1,537	1,476	1,469	96.0%	95.6%
<b>Sub-Totals</b>	<b>107</b>	<b>3,069</b>	<b>2,623</b>	<b>2,577</b>	<b>85.5%</b>	<b>84.0%</b>
<u>Other Schools</u>						
Central High	17	386	123	118		
<b>Sub-Totals</b>	<b>17</b>	<b>386</b>	<b>123</b>	<b>118</b>		
<b>District Totals</b>	<b>381</b>	<b>10,230</b>	<b>8,226</b>	<b>8,157</b>	<b>80.4%</b>	<b>79.7%</b>



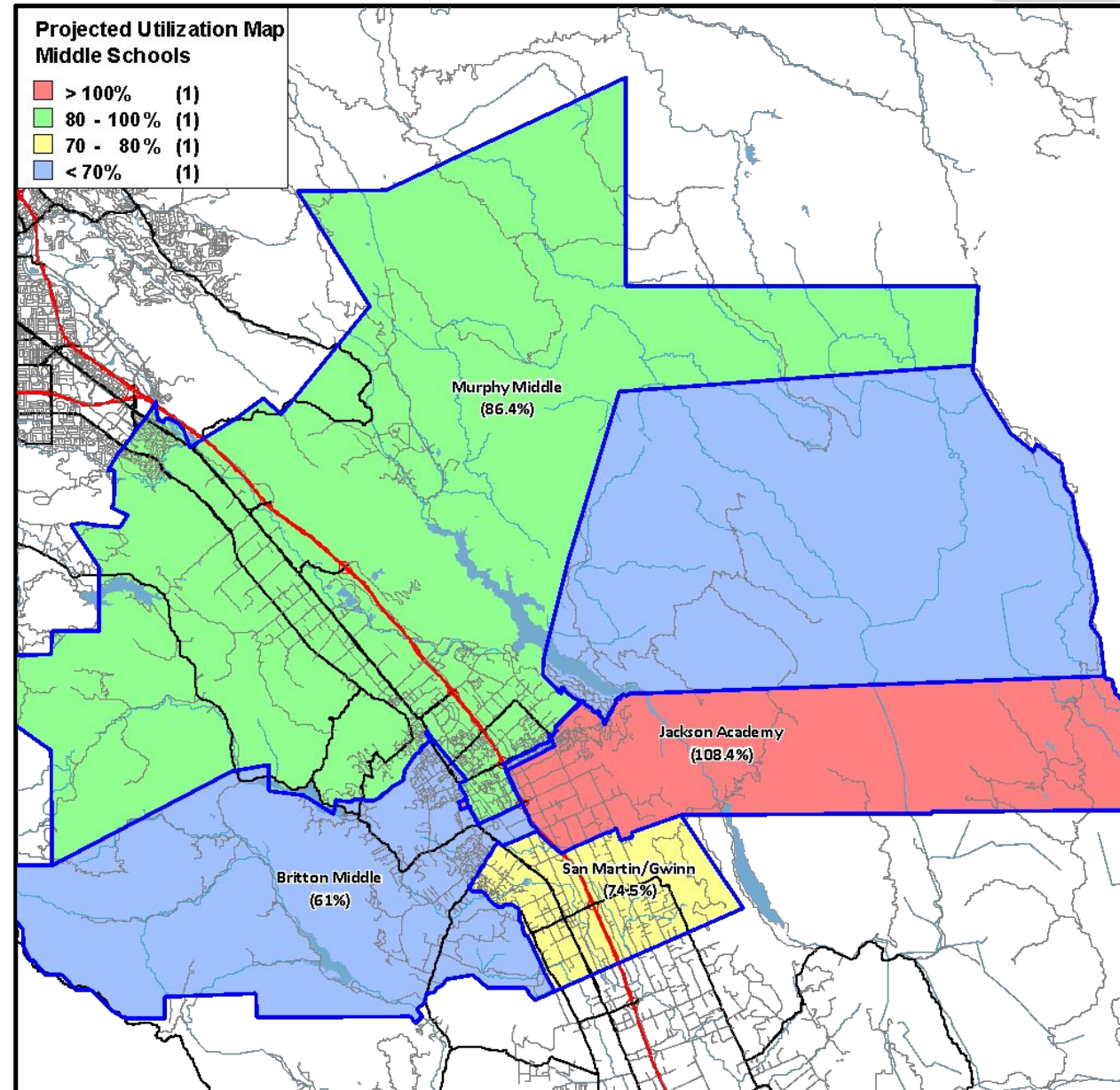
# UTILIZATION MAP - ELEM

- ▶ Using District loading standards and the classroom counts for each school, a capacity is calculated and compared to the enrollment projection to determine the facility utilization.



# UTILIZATION MAP - MIDDLE

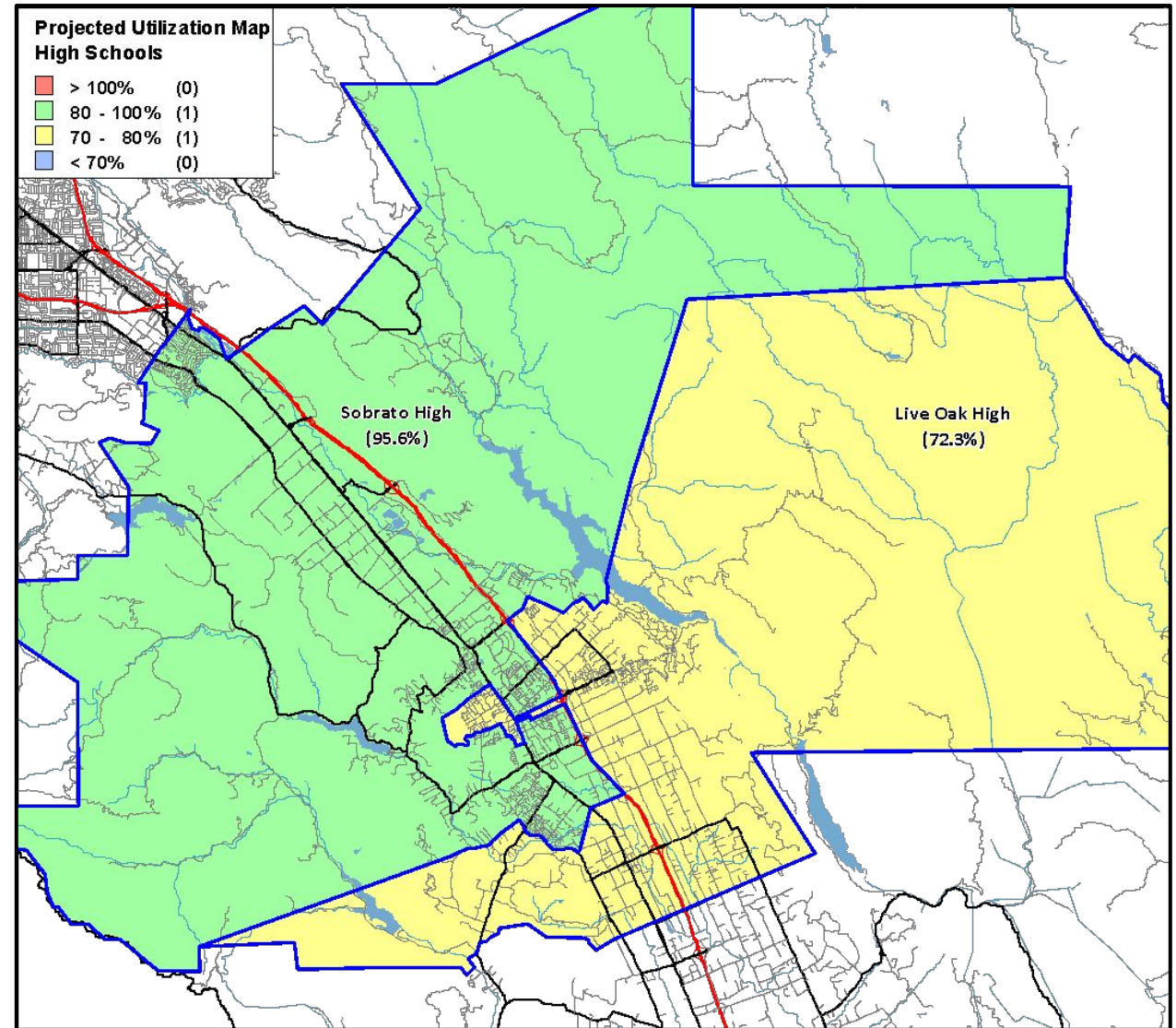
- ▶ Using District loading standards and the classroom counts for each school, a capacity is calculated and compared to the enrollment projection to determine the facility utilization.





# UTILIZATION MAP - HIGH

- ▶ Using District loading standards and the classroom counts for each school, a capacity is calculated and compared to the enrollment projection to determine the facility utilization.





# Assisted Over 300 School Districts in CA

## Contact Information:

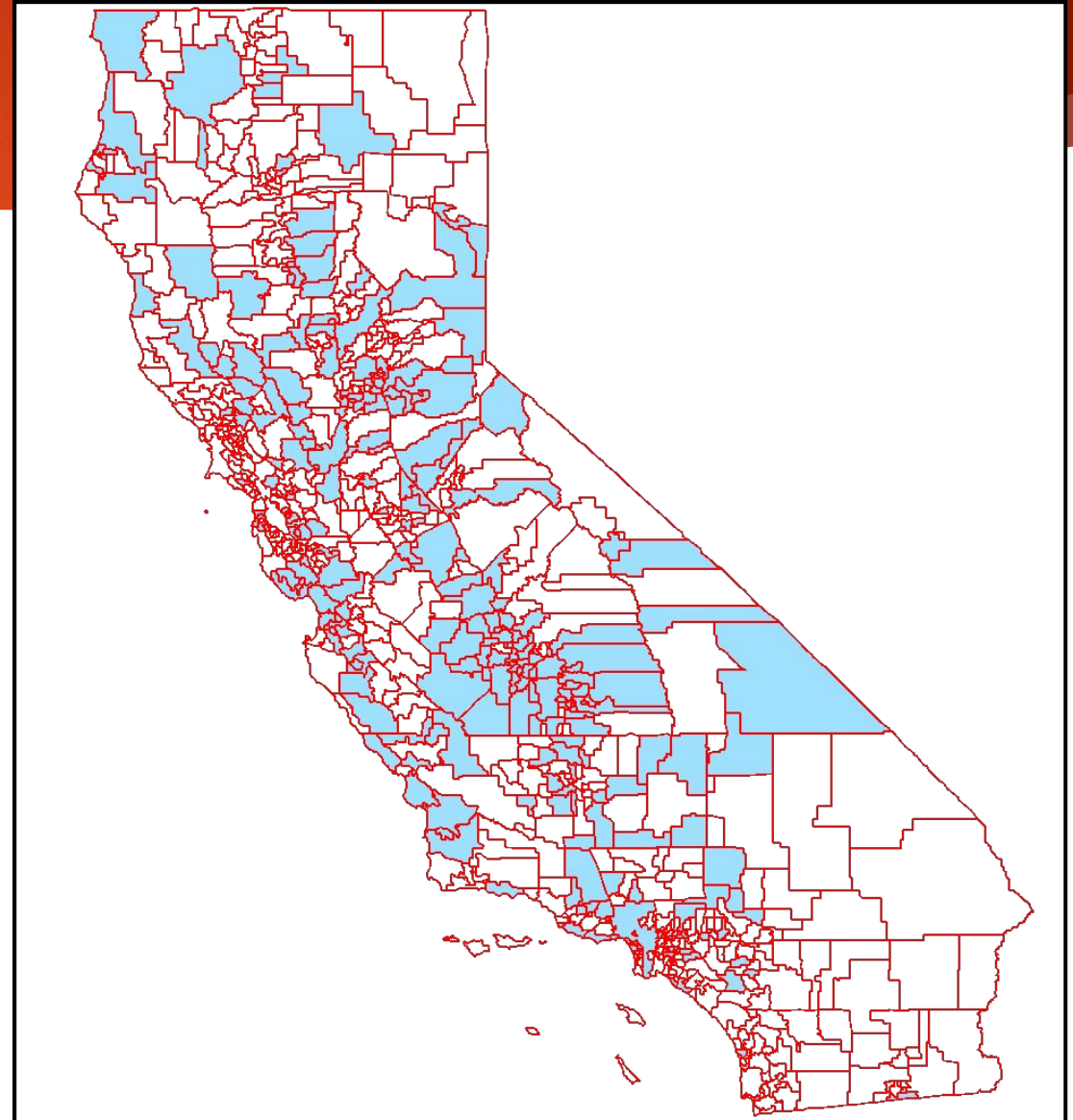
Ken Reynolds, President

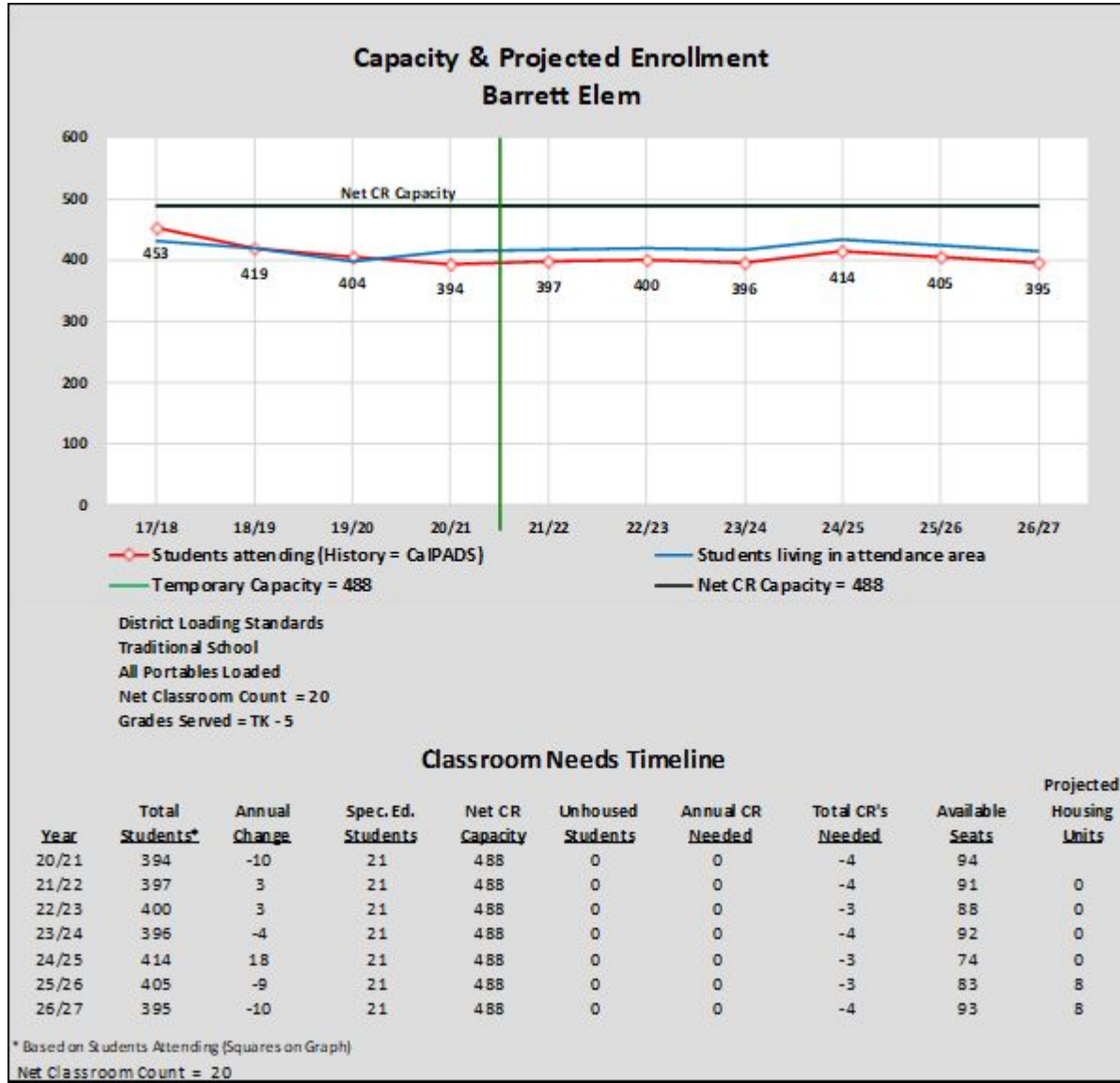
E-mail: [ken@schoolworksgis.com](mailto:ken@schoolworksgis.com)

8331 Sierra College Blvd, #221  
Roseville, CA 95661

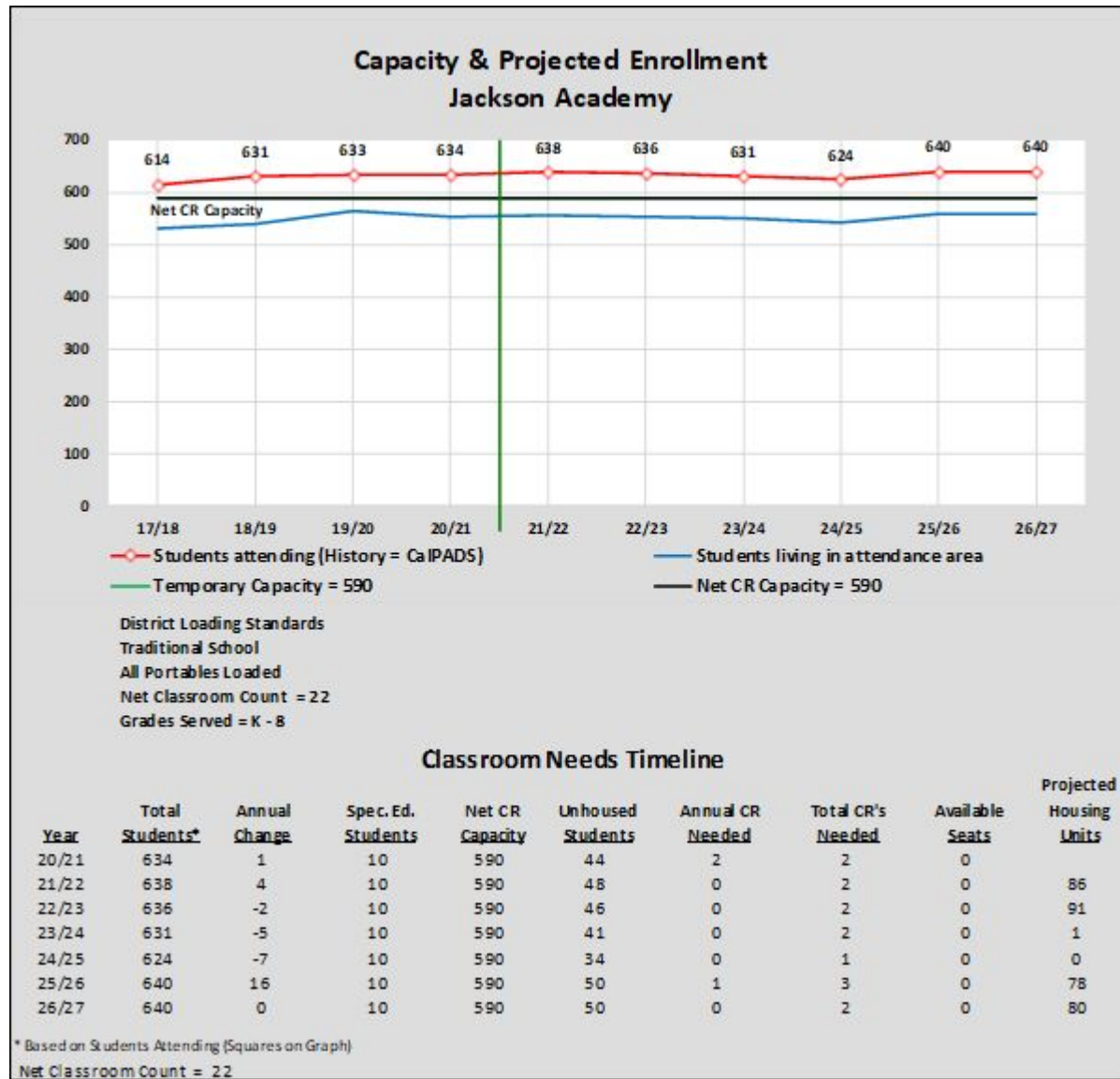
Phone: (916) 733-0402

Website: [www.SchoolWorksGIS.com](http://www.SchoolWorksGIS.com)



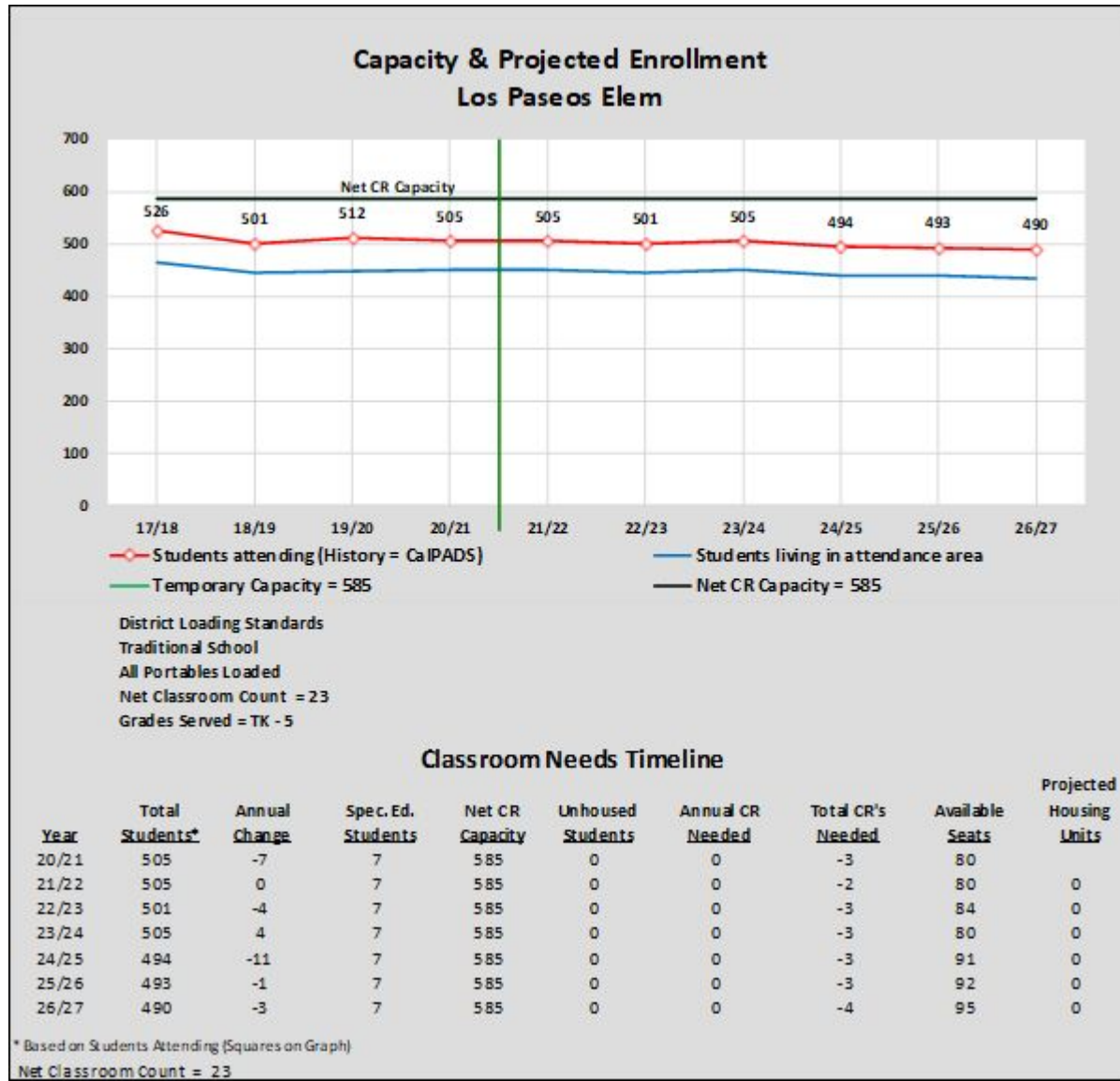


# BARRETT ELEM ENROLLMENT PROJECTION



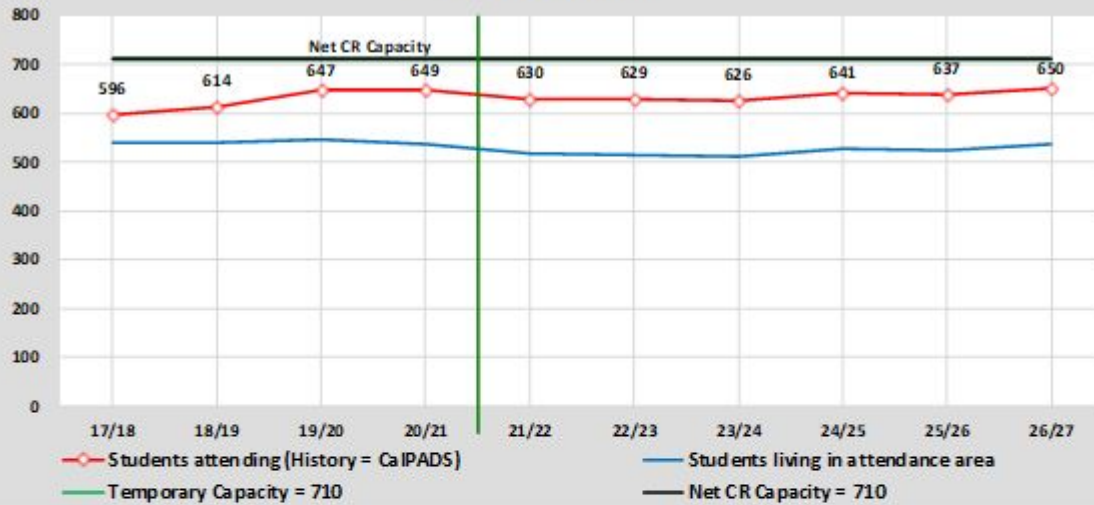
# JACKSON ACADEMY ENROLLMENT PROJECTION





# LOS PASEOS ELEM ENROLLMENT PROJECTION

### Capacity & Projected Enrollment Nordstrom Elem



District Loading Standards  
Traditional School  
All Portables Loaded  
Net Classroom Count = 28  
Grades Served = TK - 5

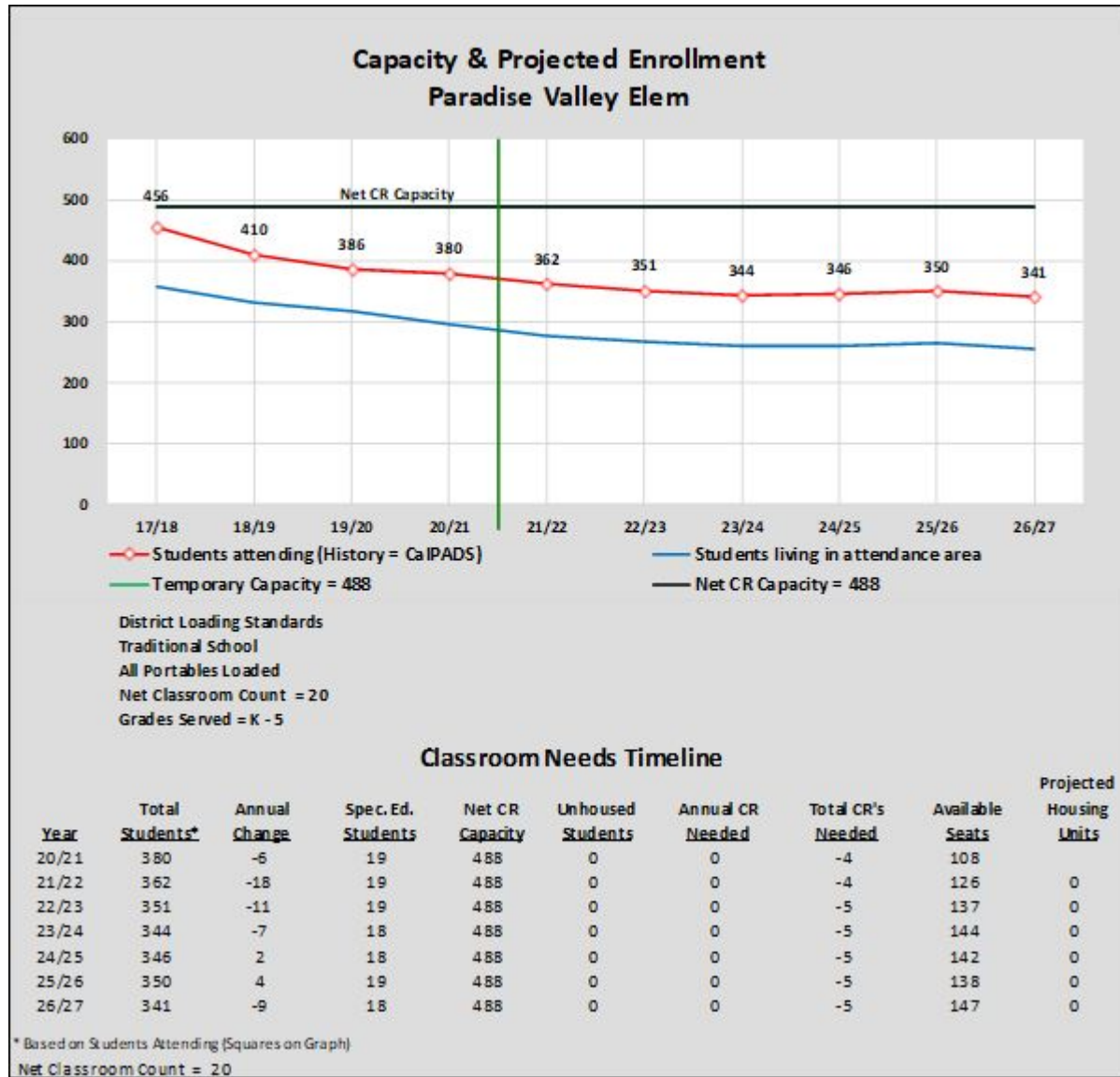
#### Classroom Needs Timeline

Year	Total Students*	Annual Change	Spec. Ed. Students	Net CR Capacity	Unhoused Students	Annual CR Needed	Total CR's Needed	Available Seats	Projected Housing Units
20/21	649	2	11	710	0	0	-3	61	
21/22	630	-19	11	710	0	0	-2	80	45
22/23	629	-1	11	710	0	0	-2	81	52
23/24	626	-3	11	710	0	0	-3	84	45
24/25	641	15	11	710	0	0	-2	69	111
25/26	637	-4	11	710	0	0	-2	73	88
26/27	650	13	11	710	0	0	-2	60	130

\* Based on Students Attending (Squares on Graph)

Net Classroom Count = 28

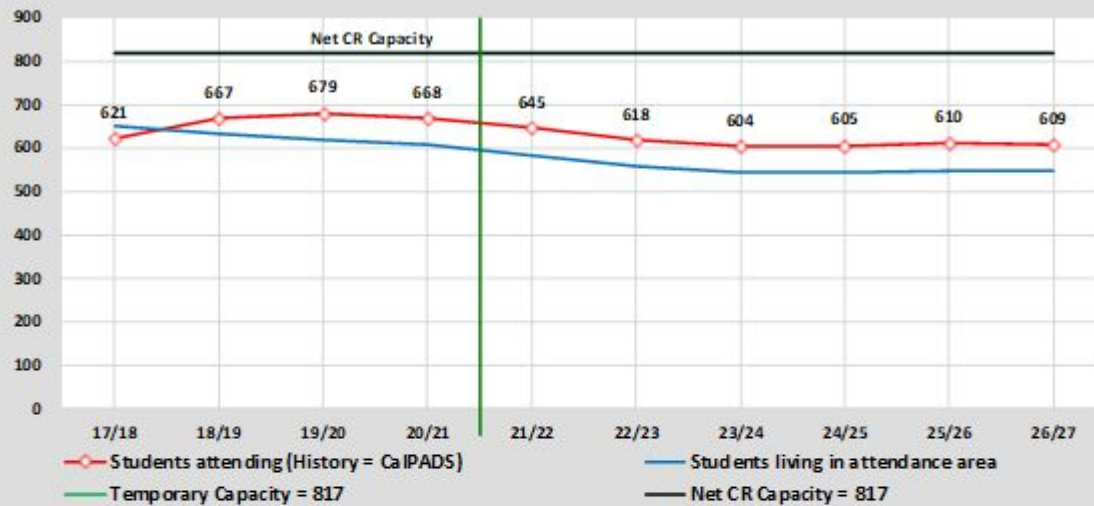
# NORDSTROM ELEM ENROLLMENT PROJECTION



# PARADISE VALLEY ELEM ENROLLMENT PROJECTION



### Capacity & Projected Enrollment San Martin/Gwinn Elem



District Loading Standards  
Traditional School  
All Portables Loaded  
Net Classroom Count = 31  
Grades Served = K - 8

#### Classroom Needs Timeline

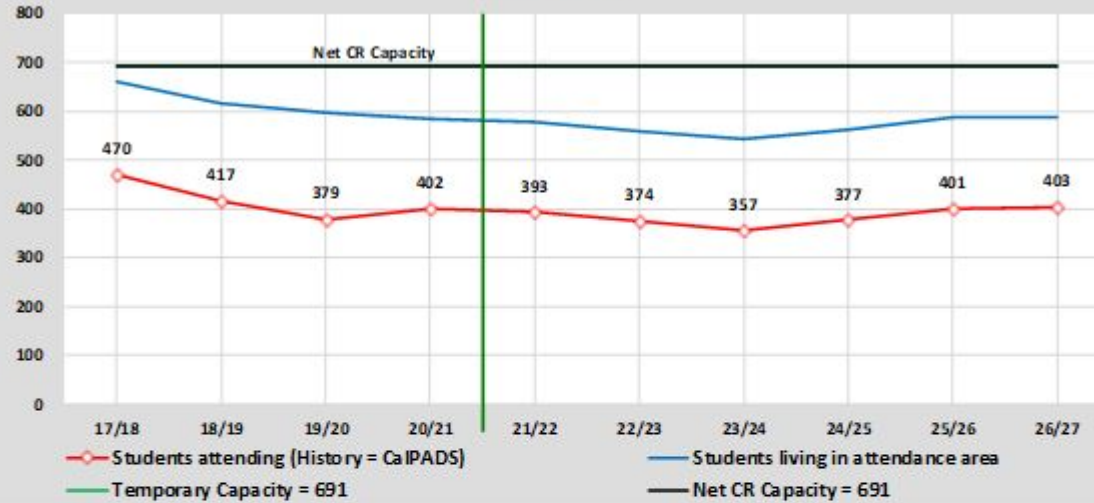
Year	Total Students*	Annual Change	Spec. Ed. Students	Net CR Capacity	Unhoused Students	Annual CR Needed	Total CR's Needed	Available Seats	Projected Housing Units
20/21	668	-11	7	817	0	0	-4	149	
21/22	645	-23	7	817	0	0	-7	172	0
22/23	618	-27	7	817	0	0	-7	199	0
23/24	604	-14	7	817	0	0	-9	213	0
24/25	605	1	7	817	0	0	-8	212	0
25/26	610	5	7	817	0	0	-8	207	40
26/27	609	-1	7	817	0	0	-8	208	33

\* Based on Students Attending (Squares on Graph)

Net Classroom Count = 31

# SAN MARTIN/GWINN ENROLLMENT PROJECTION

### Capacity & Projected Enrollment Walsh Elem



District Loading Standards  
Traditional School  
All Portables Loaded  
Net Classroom Count = 27  
Grades Served = TK - 5

#### Classroom Needs Timeline

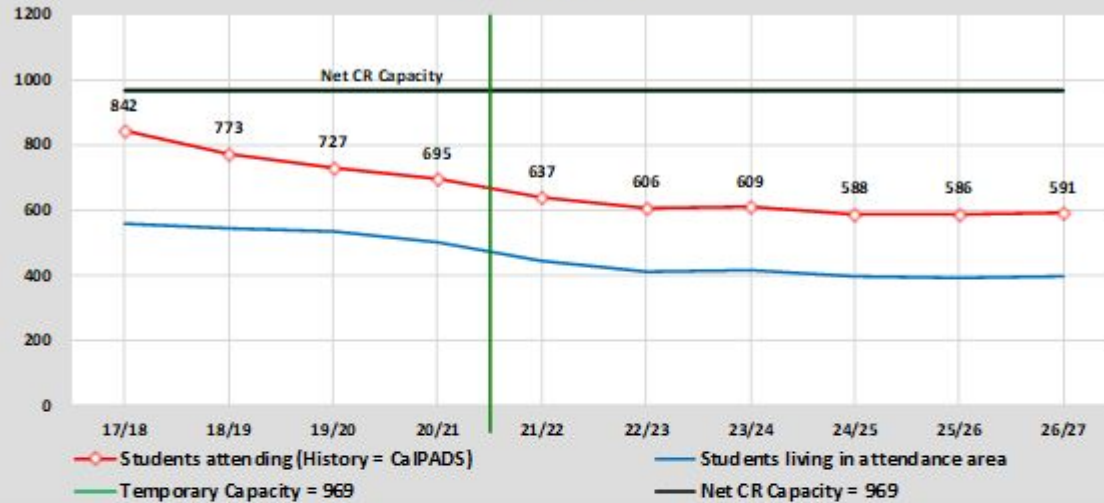
Year	Total Students*	Annual Change	Spec. Ed. Students	Net CR Capacity	Unhoused Students	Annual CR Needed	Total CR's Needed	Available Seats	Projected Housing Units
20/21	402	23	15	691	0	0	-11	289	
21/22	393	-9	15	691	0	0	-12	298	12
22/23	374	-19	15	691	0	0	-11	317	2
23/24	357	-17	13	691	0	0	-12	334	34
24/25	377	20	15	691	0	0	-12	314	155
25/26	401	24	15	691	0	0	-11	290	174
26/27	403	2	15	691	0	0	-11	288	49

\* Based on Students Attending (Squares on Graph)

Net Classroom Count = 27

# WALSH ELEM ENROLLMENT PROJECTION

### Capacity & Projected Enrollment Britton Middle



District Loading Standards  
 Traditional School  
 All Portables Loaded  
 Net Classroom Count = 34  
 Grades Served = 6 - 8

#### Classroom Needs Timeline

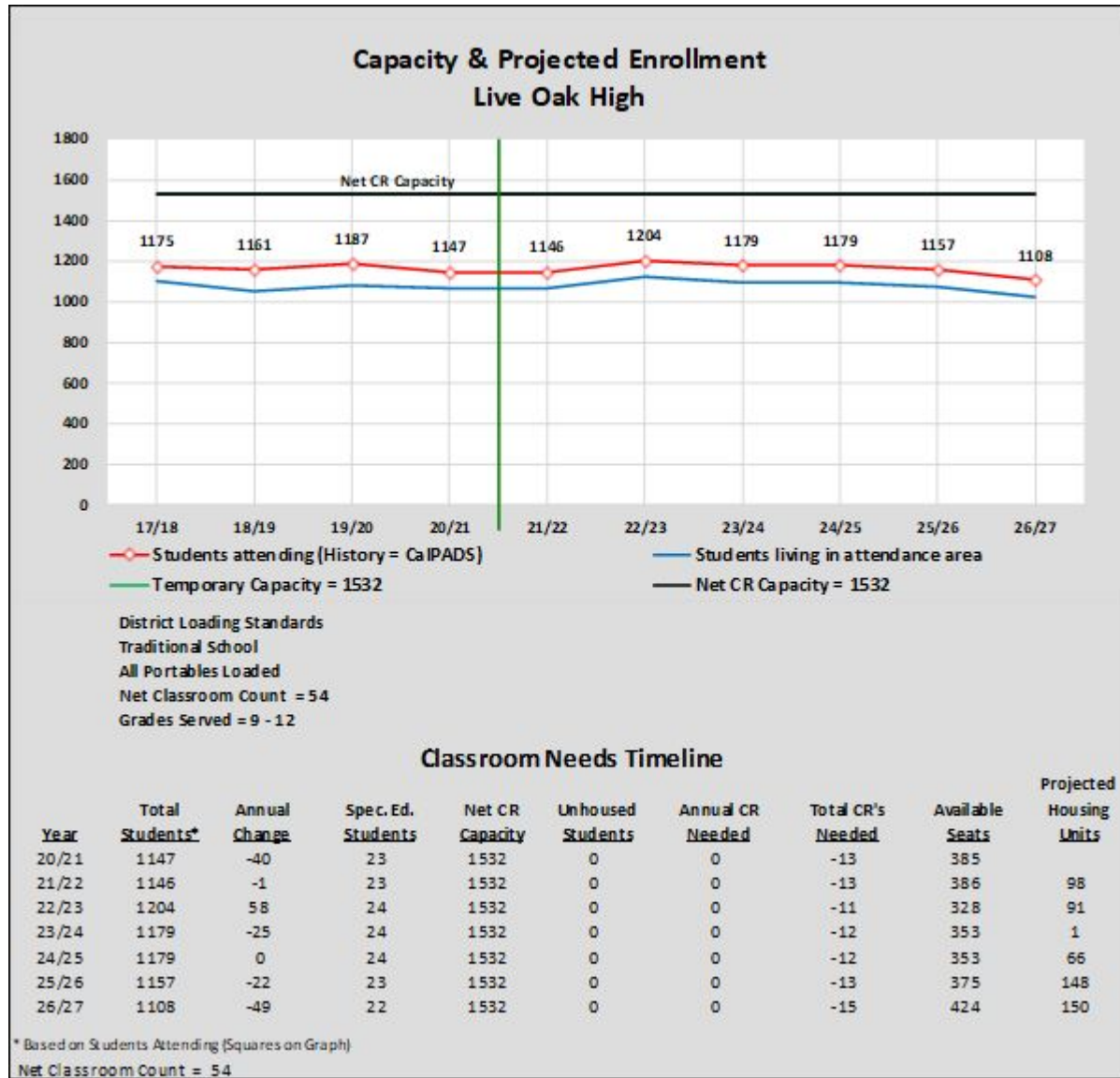
Year	Total Students*	Annual Change	Spec. Ed. Students	Net CR Capacity	Unhoused Students	Annual CR Needed	Total CR's Needed	Available Seats	Projected Housing Units
20/21	695	-32	14	969	0	0	-10	274	
21/22	637	-58	14	969	0	0	-12	332	95
22/23	606	-31	12	969	0	0	-12	363	58
23/24	609	3	12	969	0	0	-13	360	66
24/25	588	-21	12	969	0	0	-13	381	5
25/26	586	-2	12	969	0	0	-13	383	43
26/27	591	5	12	969	0	0	-13	378	76

\* Based on Students Attending (Squares on Graph)

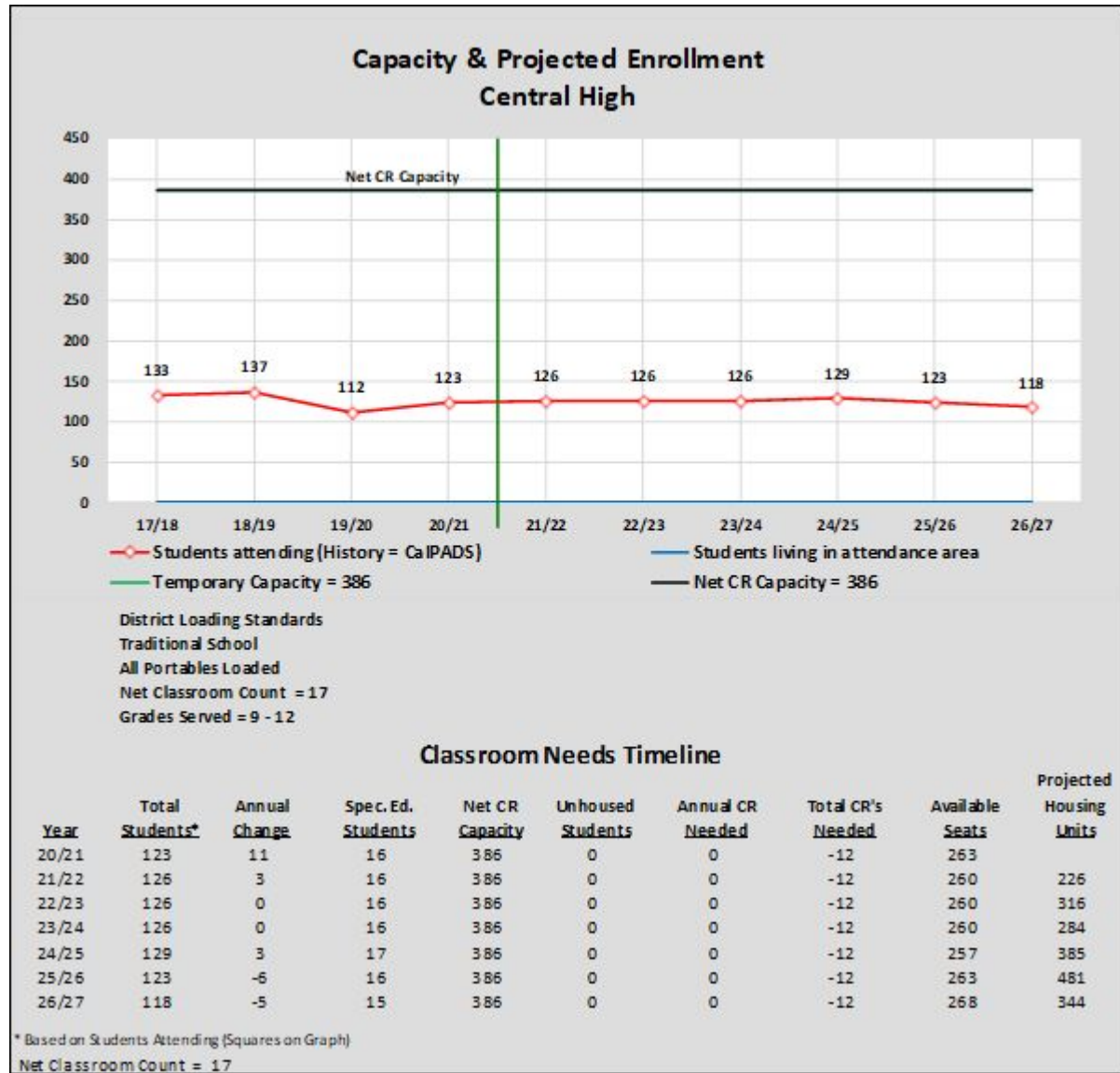
Net Classroom Count = 34

# BRITTON MIDDLE ENROLLMENT PROJECTION





# LIVE OAK HIGH ENROLLMENT PROJECTION



# CENTRAL HIGH ENROLLMENT PROJECTION