



Charter School of Morgan Hill
Annual Report to MHUSD Board
September 15, 2020

Agenda

- Review of 2019-2020
- Reopening Plan
- Learning Continuity and Attendance Plan
- Prop. 51 Update
- Coming up - Charter Renewal

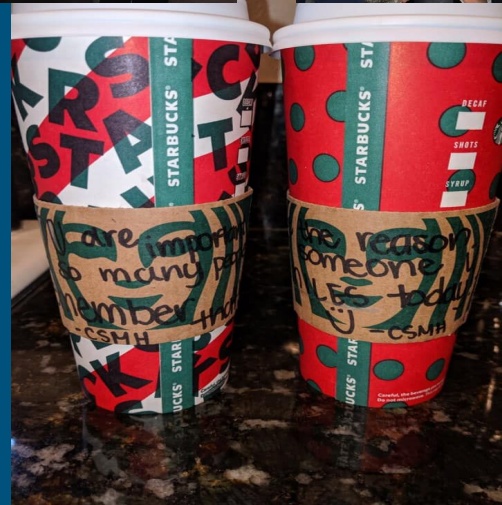
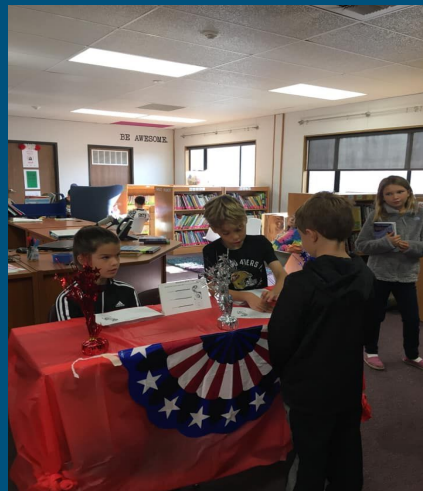
A roller coaster with red tracks and yellow cars is shown against a blue sky with clouds. The text "It was a rollercoaster (and still is)!" is overlaid in white.

**It was a rollercoaster
(and still is)!**

Highlights of 2019-2020 (pre-pandemic)



Highlights of 2019-2020 (pre-pandemic)



Transition to Distance Learning

- March 13th - last day of school
- March 16th - scheduled staff development day (teacher training and Chromebook distribution)
- March 17th - began providing instruction
- Immediately created schedules that included daily synchronous and asynchronous learning
- Established expectations for students and parents
- Students learning continued to be measured



Reopening School Plan

The Reopening Plan for Charter School of Morgan Hill is based on our school's mission, vision, and reopening priorities.



Amazing Task Force

Thank you to:

Alex Brewer - 2nd grade teacher
Amie Roberts - special education and parent
Diana Gill - Community Engagement
Coordinator and parent
Eva Swope - 3rd grade teacher
Jennifer Stenn - school psychologist and
parent
Kim Sorenson - middle school language arts
teacher
Laura Hagiperos - middle school PE teacher
and athletic director
Melissa Mangano - 3rd grade teacher

Nithya Chandra - middle school math
teacher and parent
Patrick Lynch - 3rd grade teacher
Teague Tubach - middle school Humanities
teacher and parent
Amy Smith - special education and parent
Geetha Krishnan - speech pathologist
Kristin Harman - middle school Spanish
teacher
Karen Jordan - 4th grade teacher
Lynn Mitoma - 4th grade Spanish teacher &
ELD coordinator
Mary Lima - middle school history teacher

Thank you, thank you, thank you!!

Reopening Priorities

Our school will be:



Healthy and Safe

Providing a safe place for our students to learn and our staff to work is our number one priority. We will follow all public health guidance and take the steps necessary to ensure our campus is as safe as possible.



Socially & Emotionally Supportive

We recognize that this pandemic has affected our students, families and staff members in different ways. We are committed to continuing to provide ongoing social and emotional support to our CSMH community.



Academically Excellent

Regardless of where learning takes place, we will provide an academically rigorous program that takes into account the development of the whole child. Project based learning will continue to be our primary teaching philosophy.



Connected

We will continue to create a school community that is connected and supportive of one another. Parents and staff need to work together more than ever to support students during this pandemic.



Responsive

CSMH is creating a comprehensive plan for the 2020-2021 school year. We all need to remain flexible and responsive to the needs of our students and adapt as information and circumstances change.

Reopening School Continuum

Phase 1

Kinder and 1st grade

Parents will have two options:

- Total distance learning
- Daily in person instruction with a cohort of approximately 7-10 students from 8:00-10:45 or 12:00-2:45. This instruction will take place in outside classrooms whenever possible. There will be additional learning that will need to take place at home to support and reinforce skills taught and to further enrich student knowledge.

This phase will be implemented if CSMH is granted a waiver or when Santa Clara County has been removed from the State's monitoring list for 14 days.

2nd-8th grades - total distance learning

Phase 2

2nd - 8th grades

Parents will have two options:

- Continue with total distance learning
- Distance learning with a weekly meeting initiated by teachers. These meetings may be individual or with a stable group of 3-5 students. These meetings will be held outside whenever possible. Both students and staff will be required to wear face coverings. The length of these meetings may vary.

This phase will be implemented if CSMH is granted a waiver or when Santa Clara County has been removed from the State's monitoring list for 14 days.

Other small groups may meet on campus on a regular basis based on their needs and teacher recommendations.

Phase 3

Begin expanding in-person instruction to 2nd - 4th grades., adding only one to two grade levels at a time.

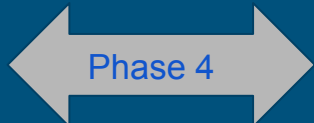
Evaluate adding more students and staff on campus every two weeks, only if the following has occurred:

- Santa Clara County has been removed from the State's monitoring list for 14 days
- Administration feels that current safety standards are solidly in place and CSMH campus can safely accommodate the increase in students and staff.

As grade levels are added, parents will have two options:

- Continue with total distance learning
- Daily in person instruction with a cohort of approximately 8-12 students from 8:00-10:45 or 12:00-2:45. This instruction will take place in outside classrooms whenever possible. There will be additional learning that will need to take place at home to support and reinforce skills taught and to further enrich student knowledge.

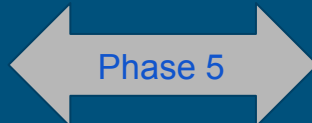
Reopening School Continuum



5th and 6th graders

Parents will have two options:

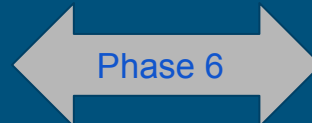
- Continue with total distance learning
- Daily in person instruction with a cohort of approximately 18 students from 8:30-1:30. This instruction will take place in outside classrooms whenever possible. There will be additional learning that will need to take place at home to support and reinforce skills taught and to further enrich student knowledge.



7th and 8th graders

Parents will have two options:

- Continue with total distance learning
- Daily in person instruction with a cohort of approximately 18 students from 8:30-1:30. This instruction will take place in outside classrooms whenever possible. There will be additional learning that will need to take place at home to support and reinforce skills taught and to further enrich student knowledge.



Begin combining smaller cohorts and extending the school day for kindergarten - 4th grades.



Health and Safety Plan

The health and safety of everyone on the CSMH campus is our top priority. We will be implementing precautions and protocols consistent with the guidance we are receiving from state and local agencies.

CSMH Recovery and Reopening Action Plan Policies and Procedures document available on CSMH's website.

Learning Continuity and Attendance Plan

- Stakeholder Involvement
- Distance Learning
- Tracking Engagement and Re-engagement
- In-person Learning
- Social-emotional support
- Building Community
- Ongoing professional development

Stakeholder Engagement

April/May - Surveyed parents and staff - 90% response rate

End of May - State of the School meeting (over 250 attendees)

June - Surveyed parents and staff about reopening models - 90% response rate

July 21st - Reopening plan presented at Board meeting (160 attendees)

Question and answer forums

- Thursday, July 21st - reopening meeting for kindergarten and 1st grade - 71 participants
- Friday, July 22nd - reopening meeting for 2nd-4th grades - 101 participants
- Monday, July 27th - reopening meeting for 5th and 6th grades - 79 participants
- Monday, July 27th - reopening meeting for middle school - 72 participants
- Monday, July 27th - multi grade - 87 participants

End of July - surveyed parents about technology needs and gathered info about students to develop cohorts

Distance Learning

Learned from spring and made changes for fall

Daily synchronous and asynchronous instruction

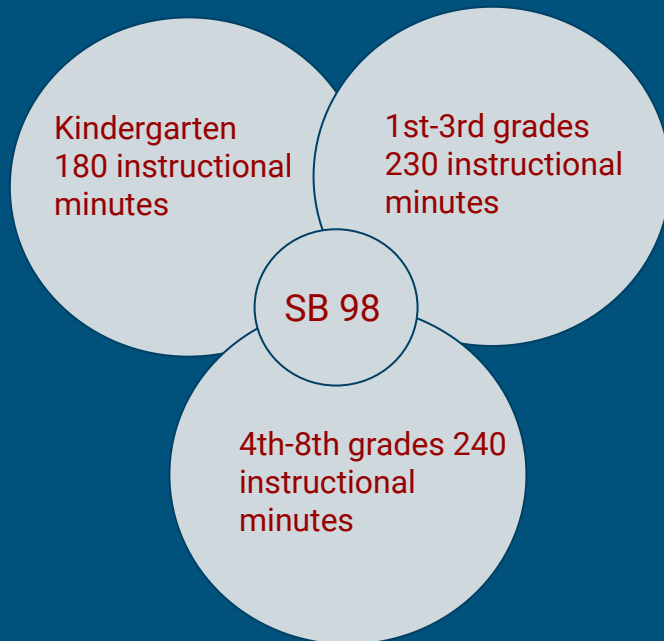
Project-based learning still our focus

Purchased additional resources and online programs

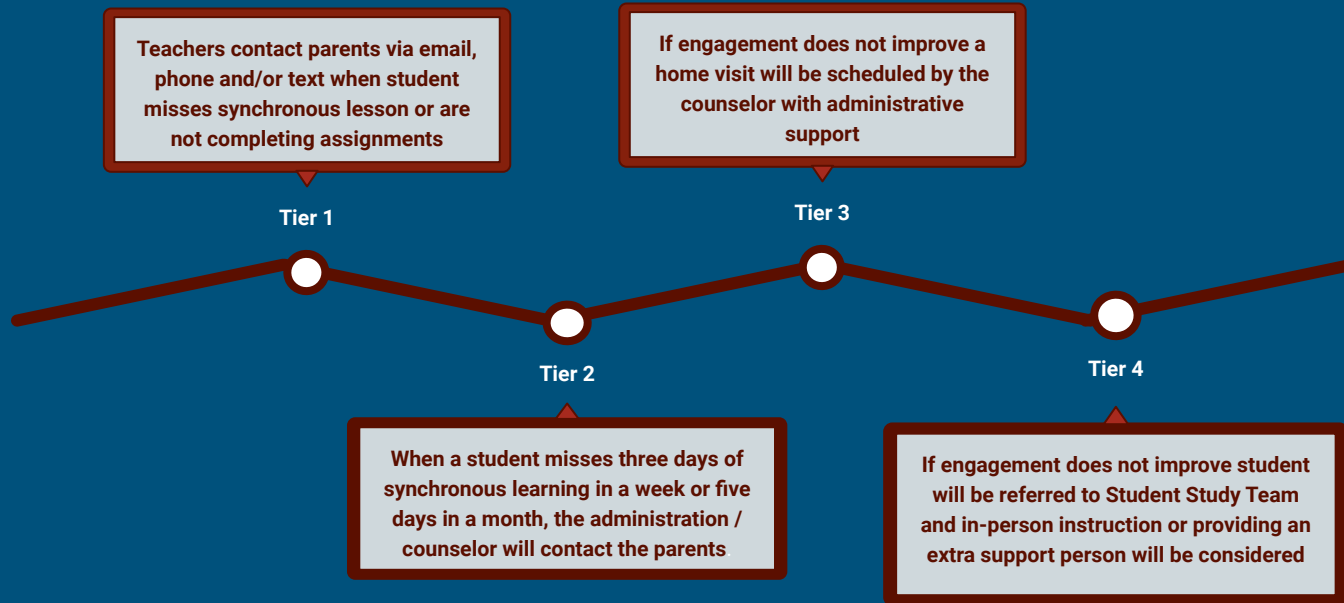
Trying to emulate in-person school to the extent possible while still maintaining balance

Reduced enrichments



[illegible]

Re-engagement Strategies





In-person Learning

- Outdoor classrooms
- Small cohorts
- Phase-in approach
- Safety procedures



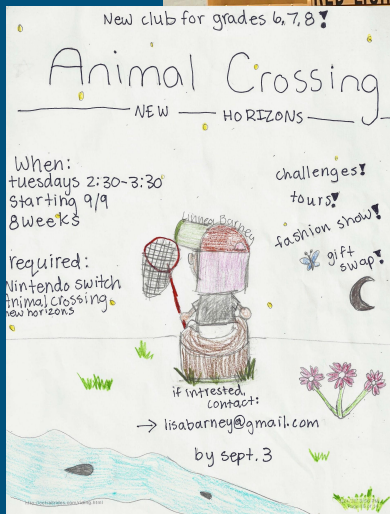
Plan to Support the Social, Emotional and Mental Health of Students, Family, and Staff

- Screeners developed for families, students, and staff members
 - Ensure basic needs are being met
 - Provide community resources
 - To be completed pre- and post- reopening
- Social-emotional curriculum to be adopted for all grade levels
- Trauma informed training and de-escalation strategies for staff during Ed Camp
- Counseling available on-site and/or through community agencies
- Providing staff support through a variety of methods

Creating Community

MORNING ANNOUNCEMENTS

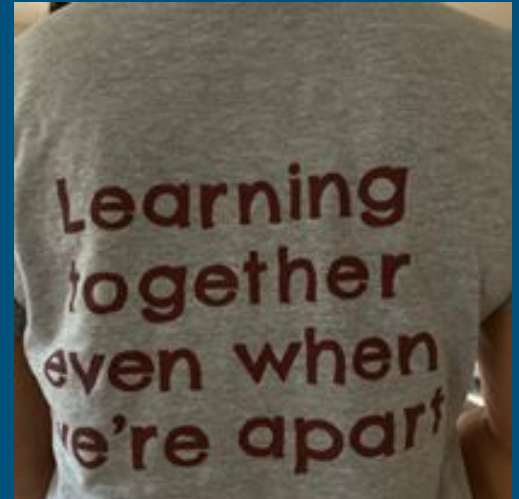
Tech Team



Ongoing Professional Development

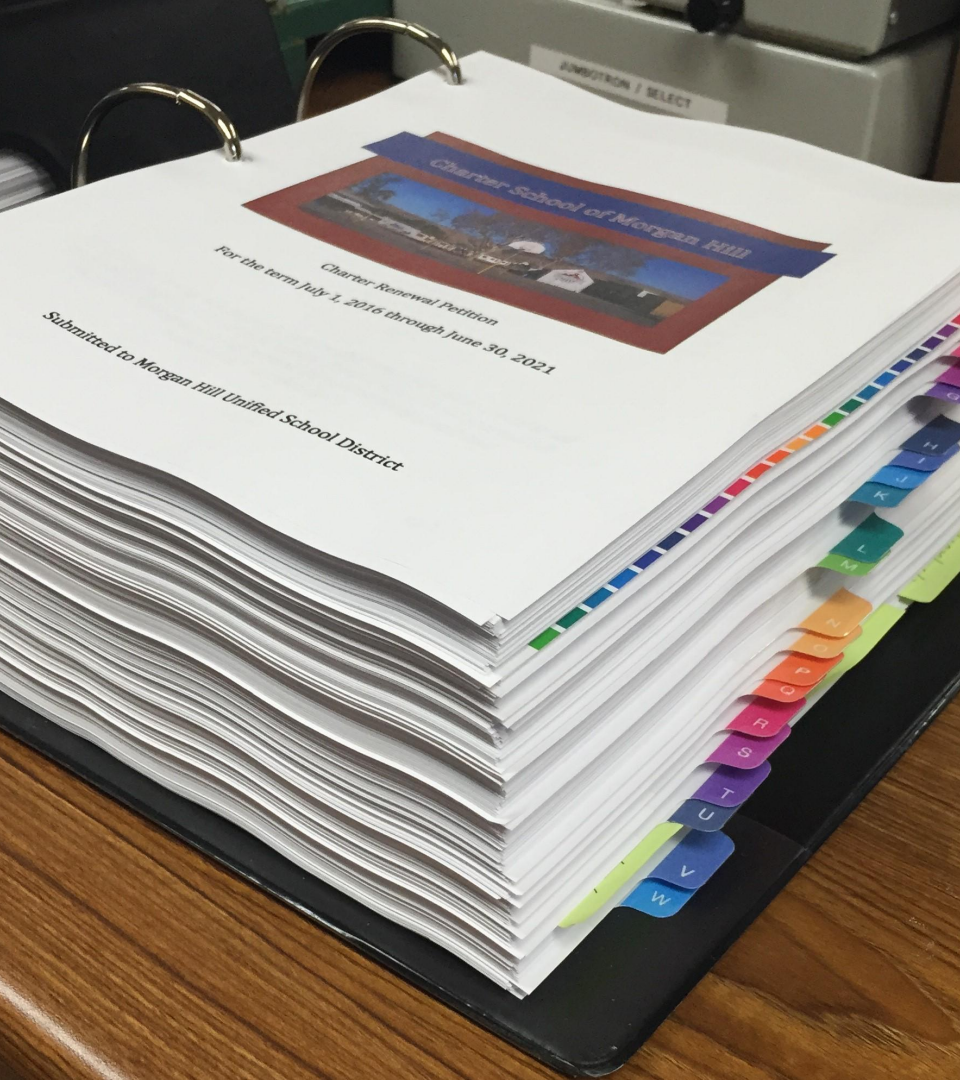
Our teachers have become experts at Zoom, Flipgrid, Screencastify, Google Classroom, Google Forms, Adobe Spark, Jamboard, Padlet, Ed Puzzle, Flocabulary, Quizlet.....

Ed Camp - trauma informed training, PBL during distance learning, time for teams to work together



Proposition 51

- Gathered stakeholder input through virtual modules
 - Visited other sites
 - Begun looking at preliminary site plans
 - Setting up regular meetings with the District
-
-



Five years just
flies by.....

Thank You!



Any Questions?

