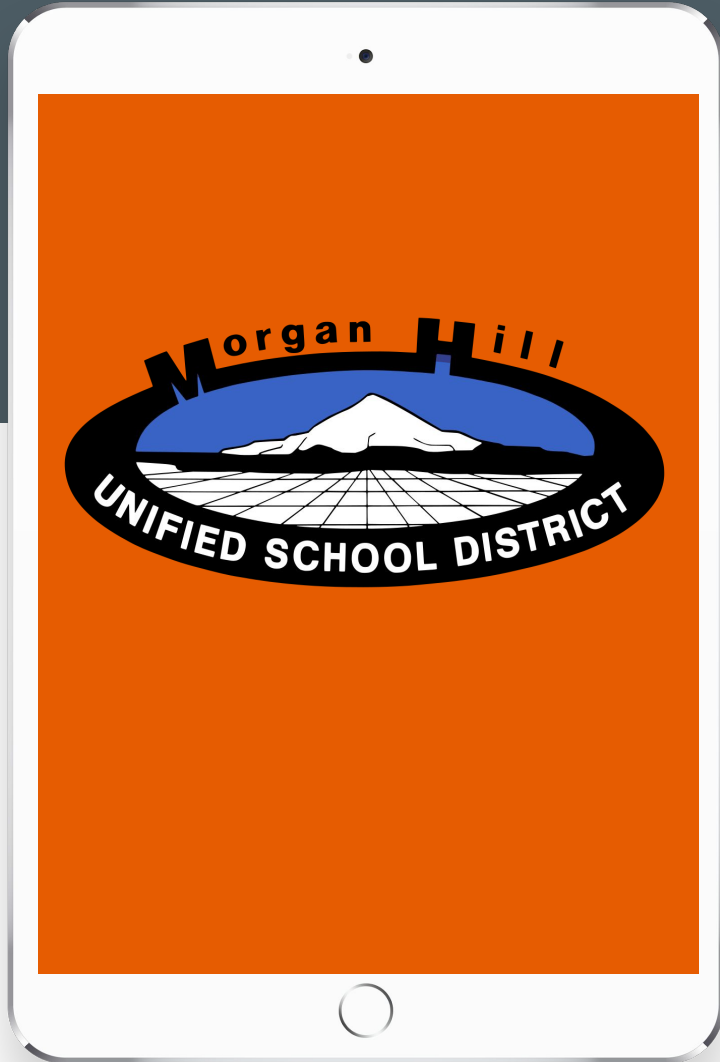


Department of Special Education¹

3 Year Plan

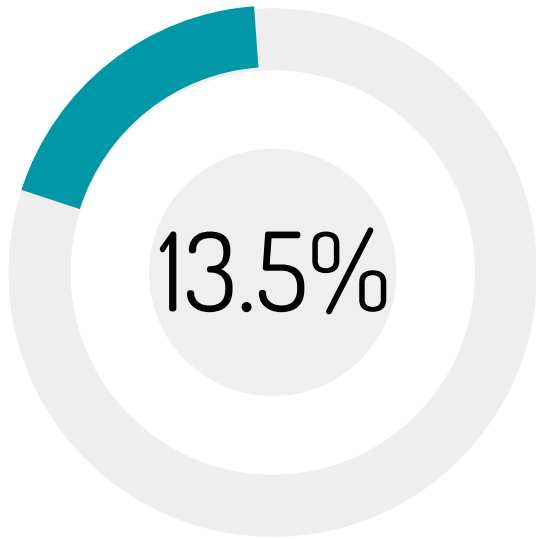


A process of systematic changes created through careful data analysis, observation, and stakeholder feedback

Special Education by the Numbers

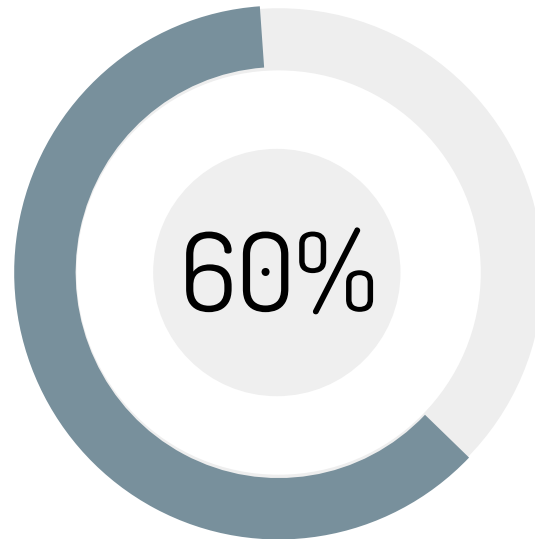


Morgan Hill Unified School District



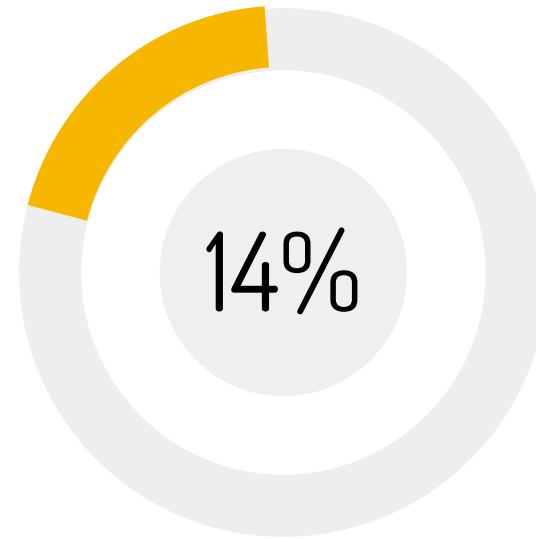
1155/8516

Total # of students in district SPED/Total # of students in MHUSD



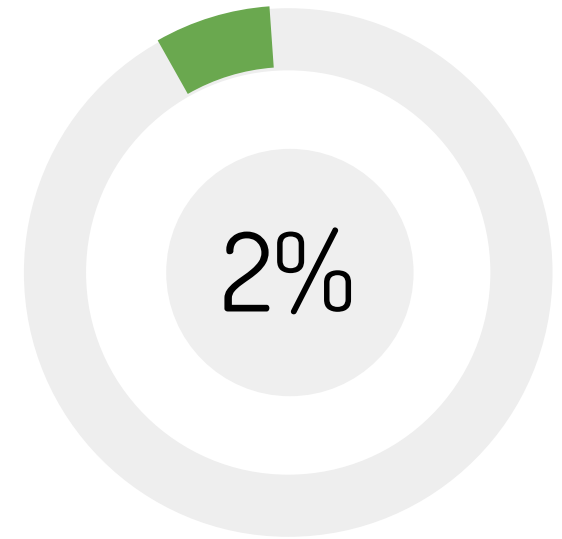
689/1155

Students in district resource program



161/1155

Students in district special day class program



24/1155

Students in district special education preschool/TK program

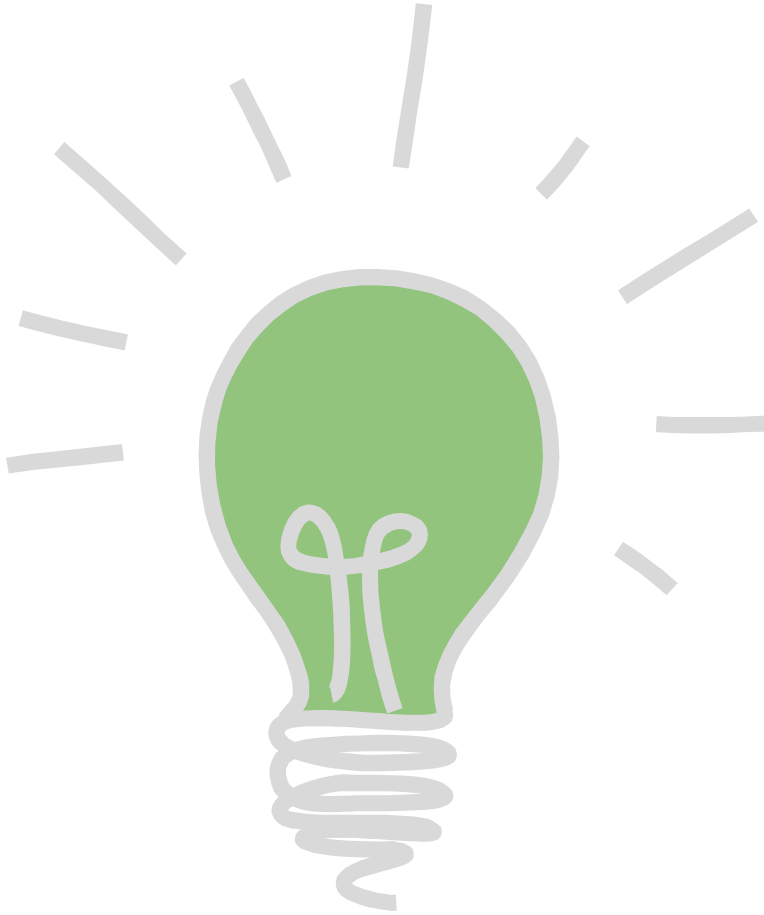
[freegoogleslides templates.com](https://www.freegoogleslides templates.com)

Our Vision



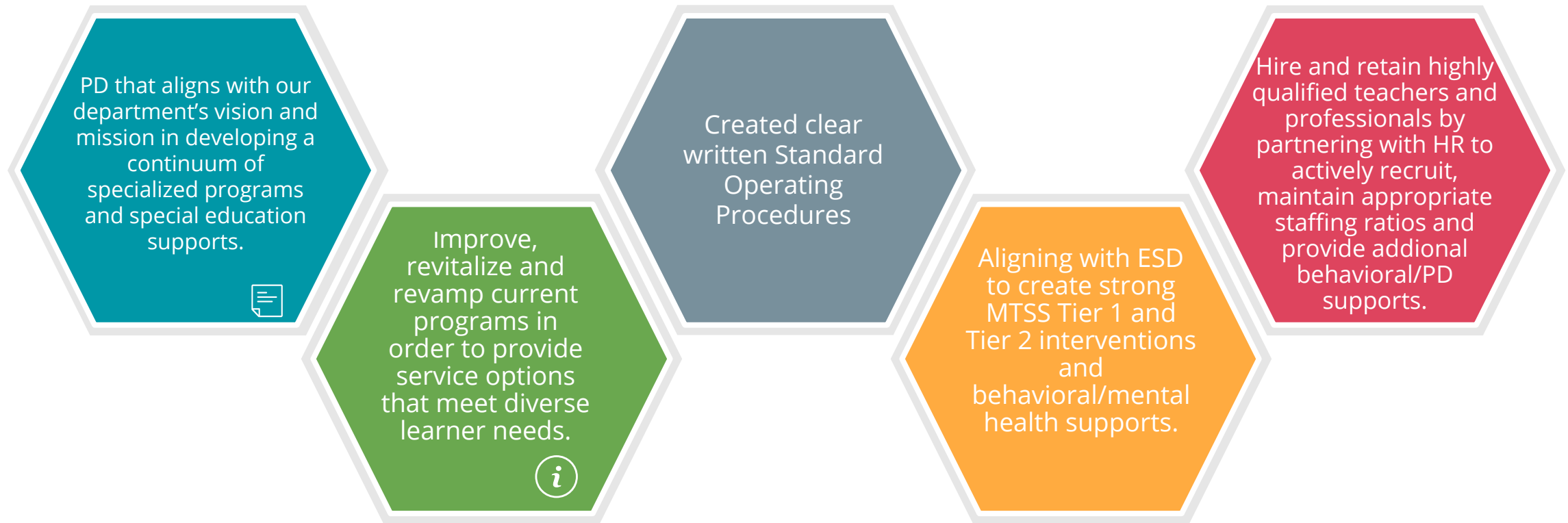
Through the use of evidence-based and equity minded practices, along with specialized trainings, the Morgan Hill Unified School District, Special Education Department prepares learners to be participating and productive members of society to their greatest capacity with a focus on closing opportunity gaps.

Our Mission



The Morgan Hill Unified School District Special Education Department will partner with parents and the community in order for students to receive high-quality education and ensure the students needs are met through differentiated instruction with an emphasis on academics, social, emotional, and self-regulation skills. As a team, we foster an understanding of individual student needs and differences in order to maximize learning opportunities and social interaction with same-aged peers through inclusive practices.

The Plan



Program Placement by Site

		Preschool/TK, Elementary K-5, Elementary K-8						
	Barrett	El Toro	Jackson	Los Paseos	Nordstrom	Paradise Valley	San Martin	Walsh
CURRENT:	SDC 3-5	PS Mod/Sev	SDC TK-1	TSDC K-2	SDC Aut TK-1	SDC K-2	SDC 6-8	SDC K-2
2019-2020 School Year		PS Resource		TSDC 3-5		SDC 3-5		SDC 3-5
				SDC 3-5				
	Barrett	El Toro	Jackson	Los Paseos	Nordstrom	Paradise Valley	San Martin	Walsh
FUTURE:	SDC SIGMA K-2	Preschool	SDC DELTA K-4	Preschool	SDC ALPHA K-2	SDC SIGMA K-2	SDC DELTA 4-8	SDC ALPHA 3-5
2020-2021 School Year	SDC SIGMA 3-5			SDC SIGMA 3-5		SDC SIGMA 3-5		SDC BETA 3-5

Program Placement by Site

Middle School, High School, Post Secondary

Britton	Martin Murphy	Live Oak	Sobrato	Central
SH SDC 6-8 SDC 6-8	TSDC 6-8 SDC 6-8	TSDC 9-12 SDC Mod/Sev		Post-Secondary
Britton	Martin Murphy	Live Oak	Sobrato	Central
RSP/SAI 6-8 SDC SIGMA 6-8 SDC BETA 6-8	RSP/SAI 6-8	SDC DELTA 9-12 RSP/SAI 9-12	RSP/SAI 9-12	SDC BETA 9-12 Post-Secondary

@googleslides



THANK

YOU

PROGRAMMING

A

ALPHA

Autism Learning Program
focused on Higher
Academics

Previously SDC Autism

B

BETA

Behavior, Emootional,
Therapeutic, Academics

Previously TSDC

Δ

DELTA

Delivery of Education, Life
skills, Therapy support
Activities

*Previously SDC
Moderate/Severe*

Σ

SIGMA

Specialized Instruction
allowing Growth and
Mastery of Academics

Previously Elementary SDC



PROFESSIONAL DEVELOPMENT PLAN



SOCIAL EMOTIONAL/ BEHAVIORAL

THERAPEUTIC CRISIS INTERVENTION



RESTORATIVE PRACTICES



SOCIAL/EMOTIONAL



CURRICULUM/ SUPPLEMENTAL MATERIALS

CORE CONTENT (ELA, MATH)



SOCIAL EMOTIONAL CURRICULUM



SUPPLEMENTAL MATERIALS



COMPLIANCE

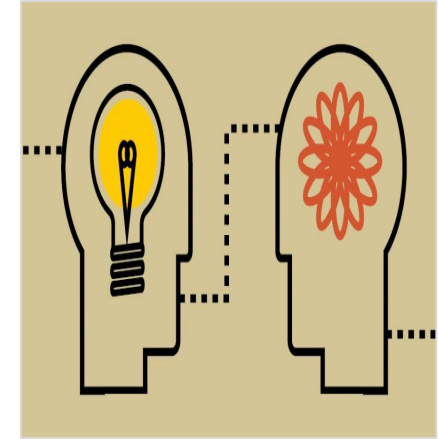
COLLABORATIVE MEETINGS



IEP WRITING



SCENARIOS/ROLE PLAYING



ASSESSMENT

FEIFER ASSESSMENT OF READING



PATTERN OF STRENGTHS & WEAKNESSES



UPDATE ASSESSMENT MATERIALS

